

Woodworkers Club of Houston

*A tool in the hand,
an idea in the head,
and a fire in the
heart ... from this is
art crafted!*

...Anonymous

Volume 27 Issue 5

May 2011

Inside this issue:

<i>President's Message</i>	1
<i>New Members</i>	1
<i>May Speaker</i>	1
<i>Helpful websites</i>	1
<i>Calendar and News</i>	2
<i>Recap: Katy Show</i>	3
<i>April Show and Tell</i>	4
<i>Recap: Steve Procter Home</i>	5
<i>Recap: M&G Sawmill Tour</i>	6
<i>News You can Use</i>	7
<i>Dues, Caps and Shirts</i>	8

Welcome New Members

Ross Benson
Augusto Cespedes
Kevin Johnson
Tom Klubert
Sean O'Connor
Larry Wenner
and over seven visitors!

PROMOTE YOUR WEBSITE

here or on our website:
wwch.org.

Historic Houston,
www.historichouston.org -- a

resource for flooring, lumber, hardware, doors, windows, shutters, fireplace mantles.etc.

Wood Marvels, www.woodmarvels.com -- Plans for various toys. Mostly for CNC machines.

Fine Scrollsaw Works, www.finescrollsaw.com -- Plans for sale of some intricate fretwork

D&M Woodcraft, <http://d-mwoodcraft.itgo.com> -- Toys and other interesting works

M&G Sawmill, <http://mgsawmill.com> -- Raw and rough cut woods (cedar, red oak, walnut, mesquite etc.), fireplace mantels, bar tops, wide slabs, peeled cedar posts and T&G flooring

OTHER GROUPS: **Scrollsaw Splinter group** www.dfwscrollers.com -- In-depth interest in scroll saw work
Hand Plane Splinter group -- Mark Bolinger -- Art of working with Hand Planes
Friday Night Toy Group -- Jim Robertson -- the original toy group

MESSAGE FROM THE PRESIDENT

Of all the many very impressive features of Steve Procter's house that he shared with us at the April meeting and afterwards at his home, the one that I keep thinking about is the ticket booth.

I'm sure it wasn't the most challenging or the most ornate or the largest of the many fabulous built-ins and accessories. Or very practical, like the "his and hers" desks. And it's not about being clever like his wood enclosure for the refrigerator that manages to hold the magnets that we've come to associate with kitchen refrigerators.

Instead, to me, something special like the ticket booth will be the thing that memories are made of. Years from now when friends and family gather at his home and ooh and ahh remembering the great media center behind the secret door or marvel over the curved molding, they'll also have the ticket booth and possible stories about whose turn it might have been to collect the tickets to the very special events taking place just beyond.

We were quite fortunate to have a trip to M&G Sawmill in April as well. Michael and Glen Carnline gave us the full tour, from log to lumber, and fed us afterwards! Their inventory includes a variety of finished products such as bar tops and fireplace mantels as well as rough sawn lumber of a number of different species.

I know some of our members were already customers even before our group trip and I hope others of you will check out their web site and photos that we took there.

Roslyn Hager, President

MAY SPEAKER – ALLAN BARR

If you have attended one of the Scroll Saw Picnics in Denton, Texas, you already may have met **Allan Barr**. If you have the March 2011 edition of Creative Woodworks and Crafts magazine, you may have read about him.

Allan will be coming in from Woodville, Texas to talk to us about his own saw mill and how he makes an assortment of rustic furniture and other products from his own lumber.

TEXAS RAMP PROJECT PROGRESS

WWCH Members Build Wheel Chair Ramp

At our February meeting we heard John Laine describe how his organization (Texas Ramp Project) builds wheel chair ramps for needy people. His presentation inspired several WWCH members to join him in building a new ramp in South Houston on Saturday, April 16th. The 40-foot ramp was a little longer than most ramps because it was for a mobile home where the vertical drop from door to grade was higher than normal. Several 4'x8' modular frames were made up on Friday evening, but the bulk of the work was performed in 6 hours on a beautiful Saturday morning. John Laine was an excellent leader and kept the work moving along smoothly.

Many thanks to Vickie Osburn, Larry Schulgen, Alan Schofield, Steve Wavro, Matt Phillips, and Ed Bramblett.



IDEAS?

Steve Wavro welcomes suggestions and ideas for speakers or topics for the WWCH monthly meetings.

Calendar of Upcoming Events

May 14 – May Monthly Meeting

Speaker: Alan Barr, sawmill operator and rustic furniture maker.

June 11 – Monthly Meeting

Speaker: Mike Turner, Woodworking Safety Presentation

July 20-23 – Woodworking Show in Las Vegas

For more information: www.awfsfair.org

Contact **Denis Muras** if you are interested in joining the **caravan to Las Vegas**. What you find in Las Vegas you can bring home on the bus! ...*well, maybe!*

SPEAKER COMING IN JUNE

The speaker for the June's WWCH monthly meeting will be member, Mike Turner, whose topic will be Woodworking Safety.

TOY PROGRAM UPDATE

HAS THE TOY PROGRAM BEEN A SUCCESS?

That is definitely a great big **YES!** Over the six years that this program has been in effect members of the Woodworkers Club of Houston have made and donated over 19,000 toys and games to over 15 different charities for distribution to the needy children of Houston. All of you who have participated in the program should be very proud of this accomplishment.

Looking to the future there is a need for more of our members to take part in this very worthwhile program. If you can spare just a few hours each month working on toys or games please contact any board member so your effort can be directed where it is most needed. If you can run a band saw, a drill press, a stationary belt sander, a router, a paint brush, or a hammer you too can make a real contribution to this program, so step up and help us continue making this program successful.

Bill Cole

Copies of plans for toys are available at WWCH meetings through **Andy Anderson**. 713-723-1030 or anmdersn@hal-pc.org to reserve.



RECAP

2011 WOODWORKING SHOW-KATY, TEXAS



This year's **Woodworking Show** was a big success for the club. Denis got us a terrific location, just outside the entrance to the hall. Not only did we get good traffic during the day, but also we had a captive audience for an hour before the show opened as people waited to get in.

Thank you to all who brought items to show the public what our club does. It was nice to change items out every day so everyone's work could be shown. Many thanks to all who volunteered to help man the booth. Your club was very well represented. We signed up several new members at the show and several more at last month's meeting, for a total of 11. There will be more throughout the year.

There were some extraordinary items in the Show Off this year. Four members submitted items in the "Show Off" which gave the club a very good percentage of the items on display. Congrats to John Gay on his curved bowl which earned him second place. The flowered top box by Jeff Sechelski, the dovetailed box by Denis Muras, and the walnut bench with black leather straps by Jeremy Grubb, all received admiring comments from the woodworkers at the show.

I made my personal contribution\$ to the vendors and I know several other club members did also. Hopefully, you all found good deals that you couldn't live without.

Two sets of DVD's were purchased for the club, so check the video library for their arrival. *(listed on page 7)*

Thank you to Denis Muras who did so much work to make the booth a success for our club.

....Norm Nichols

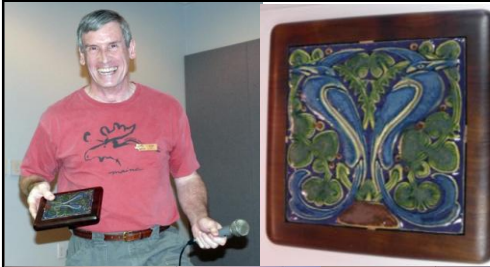


APRIL SHOW AND TELL

PRESENTERS

1. Cliff Ober – planes, tools, tile in wood frame
2. Jeremy Grubb – cherry table with inlay
3. Gary Rowen – Elephant jewelry box
4. Dave Kissinger – carved fisherman and wall clock
5. Mark Sweigart – drill brace handle
6. Steve Wavro – Intarsia Tiger plaque
7. Norm Nichols – Fretwork picture frame in red oak
8. Charlie Sembra – hand crafted jig to hold wood upright

Cliff Ober shows off some old planes and some newer ones and some useful plane making tools available on the market. Cliff also showed club members his tile piece set in wood.



Jeremy Grubb shows members with his beautifully crafted table.

Note the top with mottled cherry and figured eucalyptus fumed in ammonia which accounts for the color change.

The table legs' hand cut joinery forms a tension that holds the table legs tight.



Dave Kissinger's carved fisherman can certainly keep tabs on the time with Dave's walnut clock. *Maybe it's time to fish?*



Gary Rowen crafted this young man's elephant jewelry box for the bar mitzvah of a dear friend's son who's crazy about elephants, which may portend a "big" future for him.

Gary purchased the hand-carved topper wooden elephant. He forgot to consider the height of his bandsaw when he carved the elephant box so he had to drill out and router it to clean the inside.

Mark Sweigart crafted a replacement wood handle for this old drill brace.

To turn the handle block, he split the block and then glued it with paper in between.

Ahhh, the ingenuity!!



The "cat's meow" shows off well in this intarsia tiger head by **Steve Wavro**.

"Hold that tiger...hold that tiger..."
Yeah, yeah!!!



Fretwork picture frame of red oak by **Norm Nichols**. Finished by dipping the frame in a tub of stain then topping it off with polyurethane.



Charlie Sembra holds a jig he crafted to hold a piece of wood up, and the height is adjustable. Hmm, could be a fancy new toy.



APRIL SPEAKER – STEVE PROCTER – FIELD TRIP RECAP

WELCOME TO THE HOUSE THAT STEVE BUILT

Steve Procter was the speaker at the April WWCH meeting which featured a slide presentation of the construction and details he incorporated in his home. Afterward the members were invited to tour his home for an up close look at Steve's handiwork.

Room after room contained jaw-dropping elements—both in features like the home theatre, complete with stage, ticket booth,



The house that ideas conceived, talent executed, and we were lucky to see.

and snack bar, to intricately styled columns from Greek and Roman classical drawings in Historic America. He used purchased MDF, flexible moldings, and self crafted additional stock. Layered cornices and gilded capitals are carried throughout the house, culminating in an awe-inspiring oculus with light. Steve hopes the bulb never has to be replaced.



Most of the amenities in the home theatre are moveable – planned flexibility to allow multiple uses for the space. Other features: Dueling desktops! His and hers! Refrigerator surround in cherry with steel under the veneer for those mandatory refrigerator magnets! Bookshelves with a hinged secret door on ball bearings. And Brazilian Cherry floors!



With 16 ft windows, 5-part crown moldings, slab doors with applied moldings, use of polymer trims that bend around corners, and fabric panels to reduce bouncing sound, this home is filled with inspired creativity, determined research, and talented execution. And he built it in only three years! What a house!



FIELD TRIP TO THE M&G SAWMILL – RECAP



It was another fabulous field trip! **Michael Carnline**, one of the owners of the M&G Sawmill, hosted WWCH members to demonstrations, a tour, and lunch! **Steve Dittrich** and **Michael Carnline** sample the grub (below)!

Members in serious decision mode: **Jeff Scechelski, Norm Nichols, Andy Anderson, and Cesar Astilla.**

Ron Matherly toted a few boards home, but the rest of his purchase waits by the kiln to be dried.

Brent Brown and Norm Nichols sport their tee shirts from the Katy Woodcrafter's Show!

Sawdust flies as this employee puts a smooth finish on a board with the **Woodmaster** sander.

Pat Byrun watches **Ron Matherly** and **Michael Carnline** choose the right boards as **Cliff Ober** offers his two cents' worth!

WWCH President, **Roslyn Hager** and **Aaron** pose with the formidable "counterweight" log that balances that big wheel tractor!

It's in the blood (three generations): **Bob Roeder** with his son **Jim**, and grandson **Aaron**, hand pick the perfect board—a benefit of purchasing stock directly from a mill! At M&G you can choose just the right board from various woods: cedar, red oak, walnut, mesquite and more.

Glen Carline, Steve Dittrich, Bob Roeder, and Jim Roeder—seems like a planning session in the works!



M&G Sawmill is always happy to work with you. See their selections of fireplace mantels, bar tops, wide slabs, peeled cedar posts and T&G flooring.

Thank you to our gracious hosts!

CLUB AND MEMBER INFORMATION – NEWS YOU CAN USE

Please send inquiries to wwch@wwch.org. All comments will be forwarded to the appropriate person for response.

ADDITIONS TO THE VIDEO LIBRARY

The club has purchased some new videos for the Video Library.
Contact Blaine Stokes to reserve titles.

The Wood Magazine Videos with Jim Heavey

Cutting and Installing Crown Molding

- How four simple templates make measuring and cutting foolproof
- Secret to gap-free joints, seamless transition to walls and ceiling
- How to install long pieces of molding by yourself, etc...

Finishing Made Simple

- How to choose and use sandpaper to prep for finish
- Match your stain color from end grain to face grain
- Perfect topcoats with a brush or sprayer, etc...

Woodworking Secrets: Tips & Techniques

- The 4 essential steps to squaring your stock
- How to duplicate *any* project part quickly and accurately
- How to choose the right saw blade for any task, etc...

Guide to Perfect Glue-ups

- The simple way to apply even clamping pressure

- How to avoid alignment mishaps before the glue dries
- Why wait overnight before sanding a glue-up

The second set of videos is the **Complete Sommerfeld Tools Collection:**

1. Arched Raised Panels Made Easy
2. Glass Panel Doors Made Easy
3. Router Tables Made Easy
4. Cabinetmaking Made Easy
5. Shaker Raised Panels Made Easy
6. Mini Raised Panels Made Easy
7. Mitered Raised Panels Made Easy
8. Dovetails Made Easy
9. Angle Making Made Easy
10. Beaded Face Frames Made Easy

WOODCRAFT®

Helping You Make Wood Work®

To Find Your Local Woodcraft Store Or For A Free Catalog, Visit www.woodcraft.com Or Call 1-800-542-9115.

Over 15,000 Products In Every Store!

- | | | | | |
|----------------------|---------------------------|---------------------------|---------------------------|--------------------------|
| • Hand & Power Tools | • Finishing Supplies | • Marking & Measuring | • Workbenches | • Planes & Saws |
| • Hardware | • Books & Videos | • Cabinet Making Supplies | • Files & Rasps | • Routers & Accessories |
| • Woodburning | • Carving Tools & Chisels | • Woodturning | • Clock Supplies | • Picture Framing Tools |
| • Sanding & Scraping | • Hardwoods & Exotics | • Glue Supplies | • Shop Accessories | • Sharpening Supplies |
| • Woodboring Tools | • Safety Equipment | • Vises & Clamps | • Project Kits & Supplies | • Power Tool Accessories |

Woodcraft Is Located...

Cypress Station Square
60FM 1960 West
Houston, TX 77090
281-880-0045

11707 W Sam Houston Parkway S
Houston, TX 77031
281-988-9449



QUALITY WOODWORKING TOOLS • SUPPLIES • ADVICE™

Woodworkers Club *of Houston*

782 Maler Rd.
Sealy, TX 77474

NEXT MEETING

MAY 14, 2011

9AM TO 11:30AM

BAYLAND COMMUNITY CENTER
6400 Bissonnet

MAY PRESENTER

ADAM BARR

Rustic Woods - Furniture Design

CONTACT US AT

wwch@wwch.org

We're on the web!

www.wwch.org

WWCH BOARD OF DIRECTORS

OFFICERS

President	Roslyn Hager
Vice President	Steve Wavro
Secretary	Dan Smith
Treasurer	Norm Nichols
Publications Director	Gary Rowen
Immediate Past President/Director	John Gay

DIRECTORS

Bill Cole Denis Muras Linzie Rogers

COMMITTEE CHAIRS AND CLUB SERVICE PROVIDERS

Book Library	John Gay
Donuts	Bill Cole
Historian	Jeff Marks
Members/Name Tags	Lorraine Lewis
Membership Book	Gary Rowen
Newsletter	Joyce Saylan
Photographer	Gary Rowen
Raffle	Don Singer
Refreshments	Dave Kissinger
Technology	Denis Muras
Video Library	Blaine Stokes
Web Master	Gary Rowen

Guests are always welcome at WWCH.

CLUB SHIRTS AND CAPS – GET YOURS TODAY

Identify yourself as a WWCH member! Shirts with the custom embroidered Woodworkers Club of Houston logo may be ordered from Bill Cole at any regular Club meeting while the custom embroidered caps are available on a "ready to go" basis at any regular Club meeting. If you like, your **NAME** can be embroidered on the shirt at no additional cost.

Shirts: \$22.00 Caps: \$ 6.00

Newsletter Publication

This newsletter is edited and distributed by Joyce Saylan, who may be contacted by email at sayjoyce@hotmail.com.

WWCH PURPOSE

The Woodworkers Club of Houston is a group of men and women of all ages and skill levels who promote, educate, and share the craft of woodworking. The club meets the second Saturday of every month from 9-11:30 at Bayland Community Center, 6400 Bissonnet at Hillcroft. Guests are always welcome at no charge. Membership dues are \$24 per year, or about the price of one good clamp!