

Woodworkers Club *of Houston*

It's almost Picnic Time!

**Please purchase your
tickets at the
September meeting.**

Volume 31 Issue 9

September 2015

Inside this Issue

President's Message.....	p. 1
Splinter Groups.....	p. 2
Calendar of Events.....	p. 2
In Memoriam.....	p. 2
Annual Craft Show.....	p. 3
Christmas Ornament Contest.....	p. 3
New Sawmill.....	p. 3
Veterans Ornament Project.....	p. 4
August Meeting Wrap-Up.....	p. 4
Show and Tell.....	p. 5, 6
Interesting Website.....	p. 6
Vendor Ad.....	p. 7
WWCH General Information.....	p. 7

New Members

Welcome to WWCH!

Ben Tillison
Lynn Ruthrauff

Pick up your Membership Directory,
and sign in at each meeting so you
will be counted.

Happy to have you with us!

September Meeting

Wood Turning

with

John Gay

Fall Shop Crawl

WWCH will host a fall shop crawl on Saturday, September 26th, from 9:00 - 4:00. We will meet at 9:00 near the picnic area at Bayland Park and then carpool to the shops in Sealy and Bellville.

MESSAGE FROM THE PRESIDENT

It's been too hot for some of us to spend much time in our non-environmentally controlled workshops throughout July and much of August. None the less, there has been enough woodworking going on to provide numerous good show and tell projects. Another reason we need to get back into our woodshops in full force is to support our club over the next couple of months. Tim Shaunty has organized a wooden Christmas ornament contest. This contest provides an opportunity for all of us to demonstrate our skills and artistic talents as well as a chance to win some cash prizes and help defer expenses that Woodworkers of Texas incurred while supporting the WWCH Toy Program from the sale of the ornaments.

The deadline to enter is September 15, and you can enter as many ornaments as you wish. I have already contributed 4 ornaments: 3 scroll-sawn and one turned. Your entries can be given to Tim at the September meeting or dropped off at Woodcraft SW or Three Brother's Bakery. Tim has provided further details on page 3 of this in the newsletter.

The second opportunity to support the club is to donate small wood projects like toys, pens, boxes, bowls, fretwork, trivets, cutting boards, etc., for the club to sell at the Fall Festival and Craft Show on November 14 in Missouri City. Norm Nichols is coordinating this annual effort and can collect your donations at the September and October meetings. If your donated items don't sell, they will be returned to you. I have committed to making another Noah's Ark which has been a popular item at this craft show in past years.

WWCH will also be participating in an event at the Houston Center for Contemporary Crafts featuring working with wood on November 7. Some volunteers are needed to represent the WWCH at the center and to provide some examples of our craft. Please contact John Gay for further information.

Don't forget our picnic at the October meeting. There will not be a speaker with a formal presentation, but there will be a show and tell. Spouses, family, and friends are welcome. Please make reservations and pay in advance at the September meeting or contact David Janowitz, WWCH Treasurer, elstupido@att.net. We need to know how much barbeque and beverages to order. The ticket price is \$10 and includes a beverage.

Thanks for your contributions and involvement in club activities.

Chuck Meeder, President

Splinter Groups

The **CNC Router Splinter Group** will meet at Patrick's place on Thursday, September 17th, at 7:00pm. The address is 20734 Lake Circle North, Katy, TX. For more information contact Mike Turner 281-633-1807.

The **Scroll Saw Splinter Group** will meet October 24th at Woodcraft Southeast. Since Ron Kuenning wants new management, I am looking to him for ideas. He will be picked on in September for the program. If he is blank like I am at this moment, I will attempt to find a subject to talk about. We always are looking for your current works for Show and Tell along with Problems and Solutions. The Scroll Saw Splinter group has covered a lot of information these past few years, and we need the members to suggest ideas and/or make presentations. We thank Rick Spacek and Steve Wavro for their presentations on painting and spiral blades last meeting and Steve for Intarsia processes. See you in October! Group contacts: Norm at scrollsaw@comcast.net or Denis at denis.muras@yahoo.com.

The **Toy Splinter Group** will meet Tim Shaunty's shop on the 2nd and 4th Wednesday of the month. For anyone who has not been involved, please feel free to come and try it out at least one time. Aside from the satisfaction of doing something for others, we all seem to "learn" something new from one of our colleagues each time we meet. Remember, the 2nd and 4th Wednesday night at Tim Shaunty's shop, 3614 Thistle St. Houston, 77047. For directions or questions, feel free to call Andy Anderson, Toy Coordinator, 713-409-7030, or Tim at 713-503-2284. Hope to see you soon!

The **Sawmill Splinter Group** is for those who are cutting and milling their own lumber or are interested in doing so. We discuss sawmills and the projects possible with the lumber. Anyone with logs to mill or an interest in the sawmill can contact Bill Lindsey at bill.lindsey@comcast.net.

Hand Tool Splinter Group: Our August meeting will be on September 24th at 7:00 PM. See you at 7pm—9pm at Mark Bolinger's garage in Sugar Land near Hwy 6 and 90A. Email Mark for directions or details at marksmithb@windstream.net.

WWCH Calendar

September 9..... Toy Splinter Group
September 12..... Monthly Meeting
September 17..... CNC Router Splinter Group
September 24..... Hand Tool Splinter Group
September 26..... Fall Shop Crawl
October 10 WWCH Picnic

WWCH Collecting Toys

WWCH is collecting **STUFFED ANIMALS** to distribute to the police. They carry these stuffed animals in their squad cars to give to children when they answer domestic disturbance calls. These soft and cuddly toys are so helpful to a traumatized and tearful child when their world is turned upside down.



If you have access to stuffed animals that could comfort a child, bring them to a meeting and we'll take it from there.

In Memoriam

We are saddened to report that James DuPuy, a member of the Woodworkers Club of Houston, passed away on August 7th.



His obituary may be viewed here: <http://tinyurl.com/JDuPuy>.

WWCH Video Library

Did you know that WWCH owns an extensive wood-working DVD collection? All of our DVDs can be checked out by WWCH members. You can see the list of our DVD library on the WWCH website here: <http://wwch.org/Library/Videos.htm>. If you would like to check one out, please email the video librarian Lisa Sessions at lasessions@earthlink.net. Requested DVDs will be brought to the next WWCH meeting.

Annual Craft Show

Your club will once again be participating in the Fall Festival at First United Methodist-Missouri City. This craft show will take place on Saturday, November 14th, at the church at 3900 Lexington Blvd, Missouri City. In order for this to be once again successful for your club, we are asking for small items to be donated by the members. You can bring your items to the meetings in September and October. Please put them in a box or other container with your name on it. That way, any unsold items will be returned to you after the show. Turn your items into Norm Nichols at the meetings. If that does not work for you, contact Norm to make arrangements to get your items. You can email Norm at scrollsaw@comcast.net.

Norm will put the show together, but he cannot do the show itself as he will be participating in the show with his own booth. Therefore, we are asking someone to step up to run the set up on Friday night. Of course this show is the same day as our meeting in November which means someone will need to volunteer to miss the meeting and man the booth in the morning. Several people will be needed to man the booth in the afternoon and do the tear down.

In summary, here's what you can do for your club. Donate items for the booth. Provide set up help on Friday night. Man the booth on Saturday. Thank you in advance for your help.

Submitted by Norm Nichols

Christmas Ornament Contest

We need to determine the interest in the Christmas Ornament Contest before making final arrangements for the reception and auction. There have been very few contacts concerning the contest and we need to make sure there is adequate interest before we proceed to make final plans. Woodcraft and Three Brothers Bakery have been very supportive, but if there are not significant entries we will need to evaluate the feasibility of going forward with this contest.

If you think you might be interested in entering an ornament or multiple ornaments, please let Tim Shaunty (Contest Coordinator) know so the numbers can be sent to the sponsors. Tim can be reached at 713-503-2284, and he will be able to contact all interested parties to confirm the contest. This is an excellent way for us to showcase the skills and crafts of our club members, and I hope that there is enough interest to allow the contest to proceed. Remember, there is over \$500 in prizes in the offering!

Submitted by Tim Shaunty

New Swing Blade Sawmill in Texas

Todd Burch, former WWCH member and past president and now infrequent visitor to club meetings, has purchased a personal sawmill. It has been a dream of Todd's to own a sawmill for over 20 years. After moving to the Chappell Hill area a few years ago, he finally had the space to spread out some, and the last week in July made a mad dash to southwest Kansas to pick up a used swing blade sawmill.



The mill is a Peterson brand and can cut beams as large as 10" x 20" without rotating the log. It can cut up to a 24 feet long and 5 feet diameter log without repositioning the saw during the cut. It will be some time before Todd feels he will be proficient with it. At some future date, perhaps this coming fall or next spring when it is cooler, Todd will invite club members for a tour. Bring a sack lunch and come by and see it in action. The primary project he bought the mill for is to cut and mill his own logs to build a timber frame workshop.

Submitted by Todd Burch

Tribute to Veterans Ornament Project

A couple of months ago, we issued several veteran tribute ornament patterns to the club. We asked people to make a few of these to be given out especially on Memorial Day. These ornaments are given out all year long. This activity is being coordinated by Rick Spacek.

So far this year Rick, has collected and given out 230 ornaments! That is a wonderful number. While I am sure these ornaments have made many veterans feel good, we can do more for them. It would be so nice to reach 500 by the end of the year. If people would just make three or four stacks of these ornaments, we could do it. If you need the pattern, please contact Rick Spacek at hoss7318@yahoo.com or Norm Nichols at scrollsaw@comcast.net.

August Meeting Wrap-Up

WWCH's own Mark Bolinger spoke to club members and guests about sharpening at the August 2015 meeting. Although his talk addressed mostly hand planes, the principles apply to similar instruments such as chisels. Using a folded magazine insert reply card, Mark pointed out that the objective of sharpening is get two planes (in the geometry sense) to meet in a perfect straight line. Mark reminded everyone that you don't have to dread sharpening, but you do have to sharpen frequently to keep them sharp because sharpening is 75% of success with using hand planes.



Mark addressed two strategies for sharpening: hollow ground or secondary (micro) bevel. Hollow grinding leaves you with only a little bit of metal to remove for the final bevel. Hollow grinding requires the use of a grinding wheel – the curvature of the wheel will create the hollow space. However, with this technique you must not overheat the blade lest you lose temper – the blade, that is, and maybe yours, too. The advantage of the hollow grind method is that you can do the honing by hand, since the bevel will now register on the stones with no variation in angle. It solidly rests on the two ends of the arc created by the hollow grind.

To determine the angle of the edge, you need to know if your hand plane is bevel down or bevel up. If one is unsure, it should be easy to determine with a quick internet search for the model of the plane. The following reference is an excellent discussion of the angles involved <http://www.amgron.clara.net/page73.html>. For bevel up plane blades, Mark recommends the micro bevel method because putting in the hollow grind affects the angle required.

To begin sharpening you need to flatten the back first. Mark states that there is no way around this. After the grinding is complete, you begin the honing. Mark starts out with stone grits of 800, then successively 1200, 6000, then finishing up with 12000. It's ok to stop at 6000 or 8000 grit; Mark only recently acquired the 12000 grit stone. Stropping is the final step. Mark points out that the literature has many ways to do it and it is hard to find a good explanation as to what stropping is and why it works. The best explanation that Mark found is that the strop is a little bit flexible whereas everything else is rigid. This flexibility cleans off imperfections.

To re-sharpen an edge with a microbevel or to return to the original angle, you will need to use a guide. Mark showed some examples of clamp on top and clamp on the side jigs. Mark stressed that you needn't worry about being in the exact position you were before because you can't go back and repeat perfectly that secondary bevel. In effect, you need to recreate the secondary bevel. It's easy to do unless you over sharpen and make it too big. The advantage of the hollow grind is the blade will still register against the stone with the same angle, so it's easier to do a light touch-up of the edge.

Whatever sharpening medium you are using you'll need to periodically flatten them unless you are using sandpaper which you just replace.

Mark stated that a cheap plane blade with weak metallurgy will work just as well as an expensive plane, the only difference being that with the cheaper variety you'll have to sharpen more often.

One test of final sharpness is to shave end grain. If you can get a nice shaving you've done a good job.

Submitted by Gary Rowen

Favorite Tools & Show and Tell

Show and Tell write-up and photos submitted by Gary Rowen

PRESENTERS

- Fred Sandoval** Cradle
- Rick Spacek** Knives & Display Case
- Hugh Parker** Box
- Lon Kelley** Bowls
- Denis Muras** Table & Benches
- Rick Spacek** Cross in Wood
- Chuck Meeder** Totem Pole
- Bill Byrne** Jeep
- Glen Edwards** Nativity Scene & Cross
- David Janowitz** Sled Jointer/Planer
- Fred Sandoval** Marking Gauge & Compass

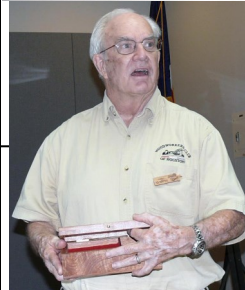
Rick Spacek crafted these survival knives then assembled a box with Plexiglas for display.



Proudly stating that he will be a Grandpa for the first time, **Fred Sandoval** made a cradle of red oak in the French heritage style. Fred commented that turning dry red oak on a lathe is not easy. He also explained how he used wedged tenons for joinery. Fred finished with five coats of Hydra-Coat, a rub on finish. Fred made templates for this cradle and members are welcome to borrow them from him.



The segmented star on **Hugh Parker's** box was his first attempt – good job, Hugh. The star was cut by handsaw but wouldn't come together. He found out that his miter jig was not exactly at 36 degrees. He fixed that then it worked. Hugh finished with water borne polyurethane.



Very old growth southern yellow pine taken from the walls, floors and ceilings of a country house provides the source wood for **Denis Muras's** table for his nieces. He finished the table with five coats of wipe on polyurethane. Denis will be offering some yellow pine for sale to club members.



Setting the bevel and miter of these segmented bowls of mahogany and walnut proved a bit tricky for **Lon Kelley**, but after some trial and error he got it right. For the maple stars, he cut strips then used the band-saw to cut the points. Lon also explained his problems with the epoxy – because of the humidity it would boil – you can see tiny little bubbles (that aren't in his wine).



Rick Spacek took a piece of oak to see if he could put a cross in it. And he did. Rick didn't smooth it up, he wanted the look of the cross being "in" the wood.



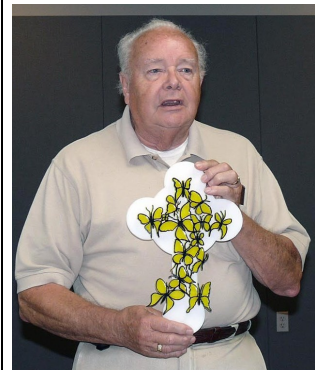
Show and Tell



Hoping to ward off evil spirits, but not the imbibing kind, **Chuck Meeder** crafted this Polynesian totem pole from 2x construction material, mostly 2x12, 2x8, and other pieces stacked together. Chuck used outdoor acrylic craft paint with a primer underneath the paint. He used three to four coats of each color.



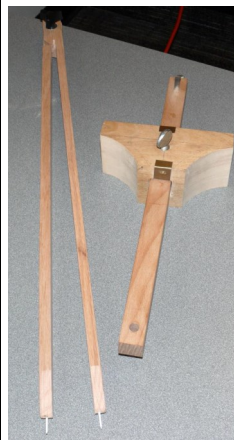
A 13 year old grandson of **Bill Byrne** asked him to make a jeep. Of course, Bill figured it wouldn't be too hard...hah...hah... Bill stated that most plans are a few pages but this jeep was nine pages – fun but a lot of effort (metaphor for lot of work). Bill added the detail of the brake and accelerator. The jeep is mostly oak with some mahogany. Bill also said it took 10% of his time to cut, 10% to re-cut, and 50% sanding and fitting. Bill knows his grandson will take care of it, it's the littler grandsons that might give that jeep a workout.



Glen Edwards (who comes to our meetings from Austin, TX) showed club members his deftly crafted nativity scene. ¼ inch walnut pieces all fit into the box. He will be making more for sale at a special event in Houston in October. The butterfly cross is crafted of regal plastic, a request from his wife.

Favorite Tools

David Janowitz explained how he constructed his sled jointer/planer using the torsion box system. This jig allows David to joint one side of a board in a planer, a board too wide for a jointer. The first pass flattens one side then, after flipping the stock over, he planes the other side



Fred Sandoval showed club members a marking gauge and a compass for drawing large arcs.



Interesting Websites

Have you ever heard of a wood species and wanted to learn more about it? I've found the Wood Database to be very helpful: <http://www.wood-database.com/>. It's chock full of information about different wood species and even includes pictures.

Another great website is the Wood Whisperer, <http://www.thewoodwhisperer.com/>. If you click on this link, be prepared to spend some time on your computer. There is a lot to look at on this site including shop tours, free how-to videos, information about design and furniture building, and more.

Submitted by Lisa Sessions



Visit the Houston locations at:

60 FM 1960

Houston, TX 77090

281-880-0045

&

11707 W. Sam Houston Pkwy S.

Houston, TX 77031

281-988-9449

WWCH General Information

WWCH BOARD OF DIRECTORS

OFFICERS

President	Chuck Meeder
Vice President	Mike Turner
Secretary	Steve Wavro
Treasurer	David Janowitz
Publications Director	Vacant

DIRECTORS

Bill Harris, Chuck Lickwar, Joe Cook,
Lynn Cummings

COMMITTEE CHAIRS AND CLUB SERVICE PROVIDERS

Book Library	John Gay
Donuts	Roslyn Hager
Club Logo Items	Norm Nichols
Membership Book	Patti Page
Members/Name Tags	Roslyn Hager
Newsletter	Lisa Sessions
Raffle	Lynn Cummings
Refreshments	Chuck Horton
Technology	Denis Muras
Video Library	Lisa Sessions
Web Master	Gary Rowen

NEXT MEETING

September 12, 2015

9:00AM TO 11:30AM

BAYLAND COMMUNITY CENTER, 6400 Bissonnet

John Gay: Wood Turning

Guests are always welcome at WWCH meetings!

Newsletter Publication: Do you have an announcement or item for the newsletter? Send it to Lisa Sessions, WWCH Newsletter Editor, at lasessions@earthlink.net.

We're on the web!

www.wwch.org

**Like us on Facebook!
Woodworkers Club of Houston**

WWCH PURPOSE *The Woodworkers Club of Houston is a group of men and women of all ages and skill levels who promote, educate, and share the craft of woodworking. The club meets the second Saturday of every month from 9-11:30 at Bayland Community Center, 6400 Bissonnet at Hillcroft. Guests are always welcome at no charge. Membership dues are \$36 per year, or about the price of one good clamp!*