

Woodworkers Club of Houston

Thoughts of poets...

Nothing Gold Can Stay

by Robert Frost

Nature's first green is gold,
Her hardest hue to hold.
Her early leaf's a flower;
But only so an hour.

Volume 28 Issue 2

February 2012

Inside this issue:

President's Message	1
New Members	1
2012 Award Winners	1
Dues/Update Member Info	2
Opportunities & News	2
Calendar and Events	2
Splinter Groups and News	3
January Speaker Recap	4
January Show and Tell	4&5
More News	6
February Speaker	7
Empty Bowls Entry Info	7
Caps and Shirts	8
Dues Deadline	8

MESSAGE FROM THE PRESIDENT

Be a Mentor - Make a Friend

On a number of occasions, when I have been in a Home Center or at one of our local Woodworking stores, I have encountered a fellow shopper interested in buying a tool. It might be a saw or a router or some other cutting tool. During the course of the conversation, it becomes clear that this buyer has no idea of the safety factors involved in the use of the tool. It could be that you don't use the miter gauge simultaneously with the fence unless you also use a stop block, or the correct direction to move the router when not using a router table, or the right kind of bit to use for a particular operation. This lack of knowledge is an accident and a tragedy waiting to happen. When I encounter this situation, I can't help but ask if I can be of assistance and give some friendly instruction. Most of the time the newcomer to woodworking is appreciative. If he declines my help, I at least leave knowing that I did what I could to prevent an accident and tell about the attributes of the Woodworker's Club of Houston.

If you can take a moment to be a mentor, you may prevent an injury and gain a new friend.

Andy Anderson, President

CONGRATULATIONS TO THE AWARD WINNERS

Welcome New Members

Louie Alexander
Robert James Blevins
David Brown
John DeBender
Kyle B. Dincans
John Fletcher
John R Moran
Josh Nichols
Charles E. Prasek
Terry Riggle
Ken Robbins



**The Golden Hammer Award
to Denis Muras**

2011
President,
Roslyn Hager
presents two
well-deserved
special annual
awards.
Congratulations!



**Woodworker of the Year Award
to Bob Wink**

THANK YOU SO MUCH

Roslyn Hager acknowledged the directors and members with special awards for their special services to the club.

Left to right: Bill Cole, Steve Wavro, Gary Rowen, Blaine Stokes, John Gay, and Don Singer

Thank you to all.



News You Can Use

The **International Woodworking/Furniture Show** is coming to Atlanta August 22-25, 2012.

We are starting to talk about going.

Great place to see new and interesting machinery.

For more details see the website: <http://www.iwfatlanta.com/>

Also, to see many ads for interesting people, take a look at: <http://www.tahoeturner.com> for some great segmented turning.

WWCH NOW ON FACEBOOK

Members, Denis Muras created a facebook group for the Woodworker's Club of Houston.

<http://www.facebook.com/pages/Woodworkers-Club-of-Houston>

Archived Copies of WWCH Newsletters Available

If you ever want to access our more recent newsletters (May 2009 to present) just click on the following link:

<http://www.wwch.org/Newsletter/index.html>

See why we do what we do at this website: WWCH members having fun!

http://www.youtube.com/watch?v=5XZQTgeRX_g

RENEW/UPDATE YOUR MEMBERSHIP

The deadline for payment is February 29, 2012

Keep your name in the directory, your newsletters coming, and get those emails that keep you updated on all the opportunities and events coming up in 2012. **Please bring your dues to the meeting or mail your check** to new treasurer, Larry Page, 19806 Sable Stone Circle, Katy, Texas 77450

PICK UP YOUR CLUB NAME BADGES from Norm Nichols at the sign in table at the back of the room.

PICK UP YOUR WWCH MEMBERSHIP CARD to show at Rockler and Woodcraft for discounts on purchases.

UPDATE YOUR CONTACT INFORMATION: address, phone numbers and email addresses.

GOING TO A WOODWORKING EVENT? TAKE WWCH BROCHURES TO SHARE.

VOLUNTEERS NEEDED

Come help assemble toys at the **Houston Center for Contemporary Craft** on Saturday, **March 3 from 9 am to 3 pm**.

Come spend an hour or two and see the artistic exhibits. Sign-up sheets will be available at Saturday's WWCH meeting.

The HCCC is located at 4848 Main Street at Hwy 59.

Calendar of Upcoming Events

February 11 — Monthly Meeting

Speaker: WWCH member, **Walter Hansen**, will talk about wooden boats: Historic Boat Restoration/Model Boat Building



Coming in March —

Speaker: Patrick Hood-Daniel Building your own CNC machine.

Coming March 31, April 1 and 2 – KATY WOODWORKING SHOW, Leonard E. Merrell Center 6301 South Stadium Lane. Katy, TX www.thewoodworkingshows.com

Call for Empty Bowls 2012 – Mid January, 2012. Awards on **Saturday, May 26**. Bowl collection will start about May 7. Contact Tom Perry if you have questions or to volunteer or participate: tomperry56@aol.com or arleblanc@yahoo.com

MEMBERS: PLEASE RETURN ANY LIBRARY ITEMS YOU HAVE BORROWED – DVDS, VIDEOS, OR BOOKS.

REGARDING THE WEBSITE

Suggestions for our website were dropped into our club's suggestion box (*Yes, we do read them*).

When someone emails the club at "wwch@wwch.org" the email software automatically generates an email message to the sender acknowledging that the sender's email has been received. It doesn't mean an email will be answered any faster by a human but at least it informs the sender that the email was received.

For someone who wants to join WWCH can now download a membership application, print it, fill it out, and either mail it to the WWCH Treasurer or bring it to the meeting.

HELP STAFF THE WWCH BOOTH AT THE KATY WOODWORKING SHOW

We need volunteers to man the display table and some of your projects to display.

See Norm Nichols to sign up!

Leonard E. Merrell Center 6301 South Stadium Ln. Katy, TX
March 31 – April 2^d Friday 2-6, Saturday 10-6, Sunday 10-4
www.thewoodworkingshows.com/styled-37/index.html

Members, enter your projects in the Woodworking Show's SHOW-OFF SHOWCASE

in Katy. Your entry will be on view throughout the show and judged by popular vote. Prizes are awarded and photos taken with some of the show's celebrities.

Information link:

<http://thewoodworkingshows.com/styled-37/index.html>

Application link:

<http://thewoodworkingshows.com/resources/ShowOFFApplication.ditable-11-12.2.pdf>

OPPORTUNITIES AND NEWS

Looking for Assistance

Feature Your Shop

The editors at WOOD Magazine are moving beyond just woodworking shops for an upcoming newsstand special titled Dream Garages and Shops. This idea-rich publication will include a cross-section of small to large garages as well as shops of various sizes situated in garages, basements, or detached-building spaces. If you have a **photogenic garage or shop**, please visit woodmagazine.com/garageshops for details on how to submit your garage or shop for review and possible publication.

If you have any questions please email me at: Benjamin Allen, Project Editor, Dream Garages and Shops benjaminwilliamallen@me.com

Contact her directly if you can help.

Ms. DeFiore needs someone who could **convert an old sewing cabinet** that fits a Singer to one that fits my Pfaff. I have some old maple and other woods from when I took woodshop. I could do this project, but I don't have a planer or edger and I don't know how to make the combination cuts required. I really would like to be able to use my sewing machine again to make doll clothes for my grandkids.

I found an old sewing cabinet that is the correct Pfaff table that could be used as a pattern. I have a small truck and my husband and I could bring both sewing tables, the one that needs to be modified and the one that is the right type, plus wood (The cabinet is from the 40's and I think it's maple. It has to be strong to hold a cast iron sewing machine from the 50s).

Thanks for any help you can provide. I truly appreciate it.
Margaret DeFiore lovebird10@sbcglobal.net 281-647-9712

THINGS TO CHECK OUT

Something to think about if you have a little time on your hands. This gentleman carved the world's longest wooden chain from one continuous plank. <http://site.woodenchain.net/>

Fine Woodworking Live Event

Source: finewoodworking.com

Meet the experts behind the magazine that you time with fellow woodworkers sharing experience and knowledge. <http://www.finewoodworking.com/item/44464/fine-woodworking-live-event/page/3>



MEMBERS, REMEMBER HELPFUL BOOKS, VIDEOS, CDS AND DVDS ARE AVAILABLE TO MEMBERS FROM **OUR WWCH LIBRARY.**

**NO CHARGE. NO LATE FEES.
NO KIDDING!**

ANYTHING YOU WANT TO KNOW YOU'LL FIND IN THE LIBRARY! IT'S A BENEFIT OF MEMBERSHIP IN WWCH.

Peruse the racks at the meetings or contact Blaine Stokes or John Gay to arrange pick up.

SPLINTER GROUPS

The Toy Splinter Group

We're off to a great start this year thanks to the wonderful people who have come out thus far. Please come join us for sawdust making, waxing, wheel banging and great coffee, a sweet or two, and some old fashioned friendship in getting to know your fellow woodworkers.

We meet every second and fourth Wednesday from 7 pm to 9 pm at Tim Shaunty's shop, 3614 Thistle, near 288 and Beltway 8. Someone will be there earlier if you want to come sooner. Come join in and help make the toys that will make someone's Christmas so special.

Contact Andy Anderson for information/directions at **713-409-7030**. Cell phone reception inside the shop is not that good at times, so keep trying and he will answer or call you back as soon as he can.

Hand Tool Splinter Group

The group meets the 4th Thursday of the month at 7-9pm at Mark Bolinger's garage in Sugar Land near the Hwy 6 and 90A. This month's meeting marks our 6th year as a splinter group. Below are the topics and agendas of the remaining 2012 meeting so you can plan your attendance and preparation accordingly.

We'll try to adhere to the schedule, however cancelled meetings sometimes happen, and if so, we'll probably keep the same order and shift the topics to the following month. I'll update the schedule by email.

Please send your top 4 topics that you most want as future agenda items to marksmithb@windstream.net.

I encourage everyone who is interested in a topic to attend. New members don't have to sign up for the splinter group in advance. Just send me an email and I'll be glad to give directions and other relevant information.

FEBRUARY—Shooting boards

MARCH—Hand planes: Everything You Need to Know

APRIL—Measuring and Marking Devices including awls, square and round

MAY—Make a box entirely by hand. Guided by the related Fine Woodworking video (Walt Hansen).

JUNE—Continue the box project

JULY—Saw Sharpening. Hugh will reproduce Kelly Mehler's saw-sharpening class at splinter meeting

AUGUST—Shop knives

SEPTEMBER—Spokeshaves

OCTOBER—Make a wooden spoon

NOVEMBER—Metalworking

DECEMBER—Make a project from a 2x4 (in time for Xmas!)

Additional Topics:

How did they do it historically?

How do professionals sharpen?

BRING A FRIEND TO THE MEETINGS. THEY'LL LEARN ABOUT WWCH, BECOME A MEMBER, OR JUST APPRECIATE WOODWORKING SO MUCH MORE...BECAUSE OF YOU.

JANUARY SPEAKER RECAP



Dan Hartt was a retired plumber when boredom led him to take a carving class at the Texas Woodcarver's Guild. His artfully carved walking cane led the director to ask Dan to hold a class on cane carving. Dan ran out of excuses and finally tried it, liked it, and the rest is history. He's been giving classes for 15 years! His website lists dates and locations: www.donhartt.com. Dan uses Chinese Tallow exclusively. It carves easily when green, dries to a hard wood that takes punishment without damage, and is beautiful with just a little stain and a polyacrylic finish. Getting started, Dan cut down all the tallow trees in his yard, cleared his neighbor's yards, found some acreage and has almost cleared it, too! One large log can yield 20 cane blanks. He learned that if it'll be a while before carving to put the green wood blanks in the freezer to prevent mold. He handles the green wood with gloves as the sap can be toxic. The blank is cut, shaped, and the background design is applied from mylar transfers he creates that are subtly graduated in size to fit the graphic to the diminishing diameter of the cane. He applies the artwork freehand in pencil.



Some graphic designs he creates himself and some are found online (see www.carvingonline.com). He even inlays turquoise bits to embellish a cane. He uses a knife for 95% of his carving, U and V gouges for details, and a leather A100 Background Tool, no longer available commercially. But he bought out the last of the supply and has he got a deal for you!

JANUARY SHOW AND TELL

PRESENTERS

1. **Glenn Edwards**—Crosses and cut outs
2. **Jeremy Grubb**—Butterfly Table
3. **Walter Hansen**—Rocking Horse
4. **Steve Higginbotham**—Wine Rack
5. **Lon Kelly**—Toy Cars
6. **Jere Kessler**—Toy Car Carrier
7. **Ron Kuenning**—Chair Glider
8. **Lance Miles**—Draw Bridges
9. **Norm Nichols**—Wood Lock
10. **Terry Riggle**—Wall Cabinet
11. **Chris Schwartz**—Model Boats
12. **Steve Wavro**—Scrollsawed Cross
13. **Bob Wink**—Floor Clock

Lon Kelley crafts the cars but lets the children at Texas Children's Hospital apply the decals he finds on the internet. Lon prints them out on clear labels so they are "see-through", and with another clear label applied to the top, they are durable.



Bob Wink made this impressive clock from a Charlie McIntosh design. The frame is oak with green stained glass inserts and a purchased clock face. It's finished with water soluble dye and Minwax.

Ron Kuenning's Adirondack chair really rocks, and glides too!! He reinforced the original design with a 1/2" lap on the slats, added cup holders (found molded plastic inserts at RV Outfitters and Cornerstone). The chair is screwed together and secured with Gorilla Glue. It's due to get a provincial walnut stain and a spar varnish finish.

Norm Nichols made this working lock from a pattern in a magazine. He applied 4 coats of General Finishes Polyacrylic with a foam brush and let the wet coats just level out. He buffed it between coats. The lock body is mahogany and maple, the shank and center is Black walnut and the spring inside is mesquite. The key actually locks and unlocks the device. The NEXT one will have a plexi-glass front so you can see the mechanism.



Walter Hansen built two of these colorful rocking horses to donate to the Shriners Hospitals. I'm sure the kids will give those horses a workout! *Ride 'em cowboy!*

Ron also showed slides of a kitchen counter top made of bowling alley maple, a rocking elephant and a horse swing that he made. Ron's really a rockin', glidin', swinquin' kinda guy!

JANUARY SHOW AND TELL

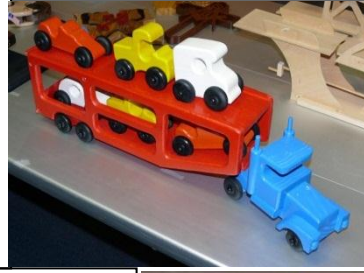
Terry Riggle created this wall cabinet in black walnut from wood inherited from a friend. He used dental molding, shiplap backing, and a French cleat to hang it since there might be considerable weight on the shelves.



Jeremy Grubb presented a slide show of two of his works: a butterfly table and a curved counter. The inlaid butterfly was an added artistic touch as was the very original curved design of the counter which provided ample shelving.



Jere Kessler made this colorful car carrier that holds the cars securely until they're ready to unload.

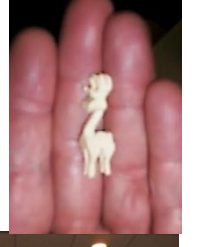


Steve Wavro scrollsawed this cross from a design by a South African Artist. The extended center backing is walnut and the motifs, one on each side are Baltic birch. One side is an Easter theme and the other is a Nativity. He applied a hook to the top so to display it during the proper season, just flip it over.



Glenn Edwards crafted these crosses for himself and his pastor. The Masonic cross is mahogany and the others are of oak and pine. Glenn also salvaged the little pieces, for the little animals, for the little kids. Might take big spectacles to see 'em. *Glenn, I think they'd make great earrings!*

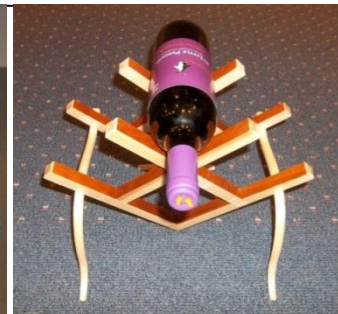
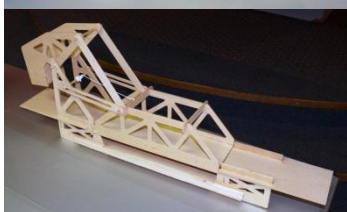
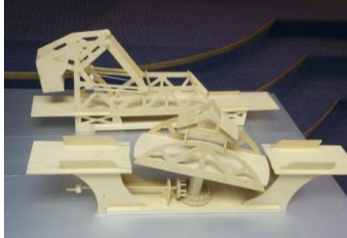
Chris Schwartz, obviously a model woodworker, showed off two of his Chris Craft runabout model boats. The insides are double planked balsa wood with a mahogany exterior. The design is "Starry Night".



Lance Miles assembled two styles of draw bridges from kits he found on sale at Hobby Lobby. He and his 7 year old spent some quality time putting them together—and playing with them I'll bet! Boys and their toys!



Steve Higginbotham's wine rack is quite a feat of curves and angles. It can hold three bottles of the nectar of the gods. It Does make you wonder if it looks the same AFTER the bottles are empty!



NEWS AND OPPORTUNITIES

If you can help Mr. Gruenewald please contact him directly:

I am a member of the Vocations Ministry for St. Cecilia Catholic Church. We are initiating a Traveling Chalice program and I am looking for someone to **build a custom case** like one I found on the internet that is used at another parish. The thought is that this will be used to transport the Chalice to the parishioner's home and then used to put it on display for the week. I enclosed the picture and am willing to pay for the work. Please let me know if anyone is interested.

Sincerely,
David and Rhonda Gruenewald
281-858-0648
rfgruenewald@earthlink.net

A photo has been posted
in the WWCH Trading Post:
<http://wwch.org/TradPost/TradingPost.htm>



THE MOSES BRIDGE

<http://www.mymodernmet.com/profiles/blogs/moses-bridge-astonishingly-splits-water>.

Designed by architecture group RO & AD, the bridge is constructed out of Accoya wood, a high technology wood that is supposedly harder and more durable than some of the best tropical woods. It is treated with a nontoxic anti-fungal coating.

From a distance, the Moses Bridge appears to vanish.



How to Take a Good Picture

There are tricks to taking a good picture...being the subject of the picture, that is and getting good information in the newsletter.

Here are some Top Tricks

Stand Still...being faster than the shutter speed doesn't work

Look up...I have lovely pictures of the tops of beautiful heads.

Speak slowly...there's good stuff between the first and last sentences of your descriptions.

Take off your hat...we can't identify you by your chin alone.

Hold up your work...hold it still...we're not shooting video.

Look at the camera...this is the pause that restoreth our faith in good pictures. Smiles are optional. Someday you may be famous.

Color coordinate...a black art piece against a black shirt disappears. They call it white wash for a reason...white washes everything out.

Write legibly...the sign-in sheet isn't a scribble sheet—it's our tool.

Hang around...sometimes we look for you to get more info, a better pose, or clarify a detail. We don't bark, bite, or chase cars.

Let us know...if there's something specific you want said about your piece, or some exotic wood or tool that we need to be specific about, email us. We love accuracy.

US: Gary Rowen row1@sbcglobal.net Photographer/webmaster
Joyce Saylan savjoyce@hotmail.com Newsletter

The Arbutus Tree

This native tree has beautiful subtleties to its wood.

It is known by several names:
The Madrone/Madrona Tree
The Strawberry Tree
Arbutus Menziesii

Find more on this tree and the items made from its wood at this website
<http://www.arbutusarts.com/>



Volunteers!



Feel Needed
Feel Wanted
Feel Loved
Feel Knowledgeable
Feel Important
Feel Grateful
Feel Wonderful
...because you are!

FEBRUARY SPEAKER

Walter Hansen will give a general introduction to the topic of wooden boat building: the types of wood used, lofting (the process of drawing parts full scale prior to fabrication), types of boat construction, an overview of a wooden 10 foot glued lapstrake sailing and rowing tender I built for the 2011 Keels and Wheels wooden boat show, an introduction to historic boat restoration and model boat building featuring the restoration of a 1942 Danish fishing boat now at the Holocaust Museum of Houston, and an introduction to the Gulf Coast Historic Ship Modelers Association at the Houston Maritime Museum. A 48-slide powerpoint presentation will help to cover this rather broad set of topics.



Walter Hansen and his wife, Nancy.



Hansen's boat at Keels and Wheels photo submitted to Wooden Boat Magazine.

EMPTY BOWLS HOUSTON 2012 – CALL FOR PROPOSALS FOR PRESENTATION BOWLS

The 2012 Empty Bowls Steering Committee is seeking proposals from local artists to create "Presentation Bowls", which will be presented to major sponsors of this year's Empty Bowls Houston in gratitude for their monetary donations, critical support, and participation. Empty Bowls Houston, now in its eighth year, is presented by Whole Foods Market and implemented locally by Houston-area ceramists and other media artists in concert with the Houston Center for Contemporary Craft and Houston Food Bank. In 2011, Empty Bowls Houston raised almost \$50,000, enabling the Houston Food Bank to provide 150,000 meals for those in need in Houston and its surrounding communities.

Requirements: Bowl can be made in your preferred material(s) (ceramic, glass, wood, metal, mosaic, paper, fabric, etc.)
Bowl must be a minimum of 12 in. by 12 in. with a minimum height of 3 in.
Bowl must have an inscription featuring Empty Bowl 2012 and the recipient's name.

Commission: Each selected artist will receive a commission of \$100.

Artists Benefits: Presentation bowls and the artist names will be displayed at this year's Empty Bowls Houston event, which will be held on May 26 at the Houston Center for Contemporary Craft. Each artist should be present during the presentation of the bowls to the sponsor to receive an acknowledgement of their work. Artists and their bowls will be featured in Empty Bowls Houston publicity and promotional materials.

Charitable Contribution: Artists may choose to donate all or a portion of their commission to Empty Bowls Houston and the Houston Food Bank as a tax-deductible charitable contribution.

Information: Please contact Andy Bally at abally1@gmail.com or Thomas Perry at tomperry56@aol.com.

Proposals should include the following:

- A Written description of the proposed presentation bowl.
- A Brief Artist Profile/Bio and Artist Statement
- Photographs/Images of representative work
- A sketch, drawing and/or photograph of the proposed work.

Timeline:

- The Empty Bowls Committee will accept proposals until March 23rd, 2012.
- Proposals will be reviewed and selection(s) made on or before March 30th, 2012.
- Selected Artist(s) will be notified by April 2nd, 2012.
- Finished work from the selected artist(s) must be delivered to the Empty Bowls Committee no later May 16th, 2012.



Save up to 75% by building your own shutters!



Our new jigs and
online wizard make
it easy!

Visit Rockler.com/Shutters to learn how.



Create with Confidence™

Watch out for our Anniversary SALE,
starting 1/28/12 - 3/2/12.

3265 Southwest Fwy. • Houston, TX 77027 • (713) 622-6567 • Rockler30.com
Store Hours: M-F 9 am-7 pm • Sat 9 am-6 pm Sun 11 am-4 pm

Woodworkers Club *of Houston*

782 Maler Rd.
Sealy, TX 77474

NEXT MEETING

FEBRUARY 11, 2012

9AM TO 11:30AM

BAYLAND COMMUNITY CENTER
6400 Bissonnet

FEBRUARY SPEAKER

Walter Hansen

**Building Wooden Boats
Historic Restoration
Model Boats**

CONTACT US

We're on the web!

wwch@wwch.org

WWCH BOARD OF DIRECTORS

OFFICERS

President	Andy Anderson
Vice President	Steve Procter
Acting Secretary	Denis Muras
Treasurer	Larry Page
Publications Director	Gary Rowen
Immediate Past President/Director	Roslyn Hager

DIRECTORS

Steve Higginbotham	Lance Miles
Linzie Rogers	Bob Wink

COMMITTEE CHAIRS AND CLUB SERVICE PROVIDERS

Book Library	John Gay
Historian	VACANT
Members/Name Tags	Lorraine Lewis
Membership Book	Gary Rowen
Newsletter	Joyce Saylan
Photographer	Gary Rowen
Raffle	Don Singer
Refreshments	Dave Kissinger
Technology	Denis Muras
Video Library	Blaine Stokes
Web Master	Gary Rowen

FEBRUARY 29,
IS THE
DEADLINE FOR
INCLUSION IN THE
2012 MEMBERSHIP
DIRECTORY

RENEW YOUR
MEMBERSHIP TODAY!

SHIRTS! CAPS!

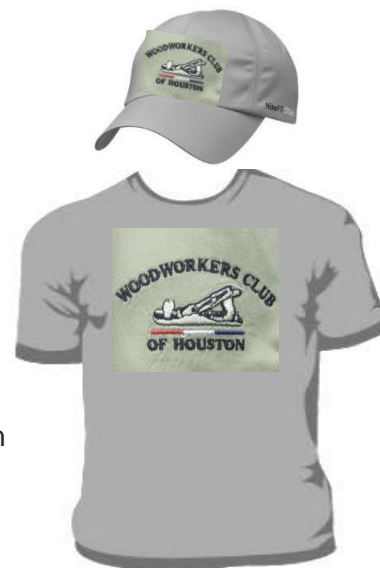
Get yours today!

**Wear your WWCH official shirt
or cap to all the upcoming
shows and workshops.**

See Bill Cole to order a shirt, or pick up a cap at the meeting.

Want your name custom embroidered on the shirt? Bill will take the order.

SHIRTS: \$22.00 CAPS: \$6.00



Guests are always welcome at WWCH

WWCH PURPOSE

The Woodworkers Club of Houston is a group of men and women of all ages and skill levels who promote, educate, and share the craft of woodworking. The club meets the second Saturday of every month from 9-11:30 at Bayland Community Center, 6400 Bissonnet at Hillcroft. Guests are always welcome at no charge. Membership dues are \$24 per year, or about the price of one good clamp!

Newsletter Publication --This newsletter is edited and distributed by Joyce Saylan. Send content or questions by email to sayjoyce@hotmail.com.