

THE WOODWORKERS CLUB OF HOUSTON

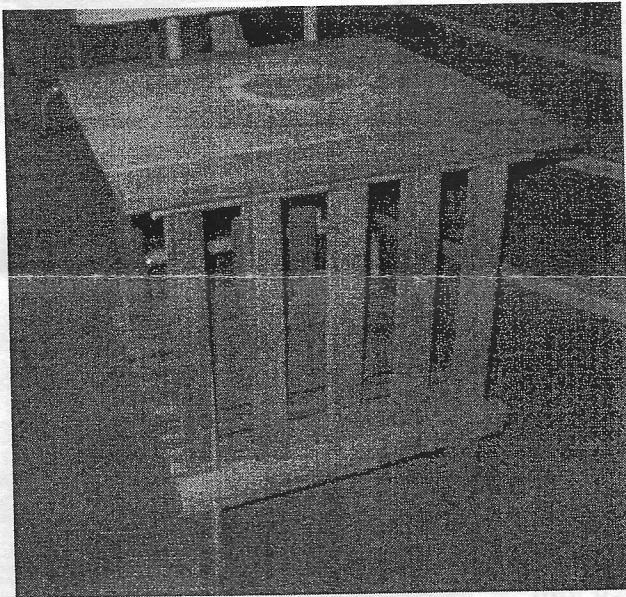
VOLUME 19, NUMBER 9

SEPTEMBER 2003

WWW.WWCH.ORG

EMAIL STUFF

Have you been receiving any emails from your club secretary, Gary Rowen? If you haven't he either doesn't have your email address or your address returns errors. There are several members whose emails are returned as undeliverable, you know, as Elvis said, "Return to Sender". Also make sure they aren't going into your junk mail filter box, heaven forbid. Gary only uses member email addresses for general purpose club announcements and will not provide them to any marketer, mass or private.



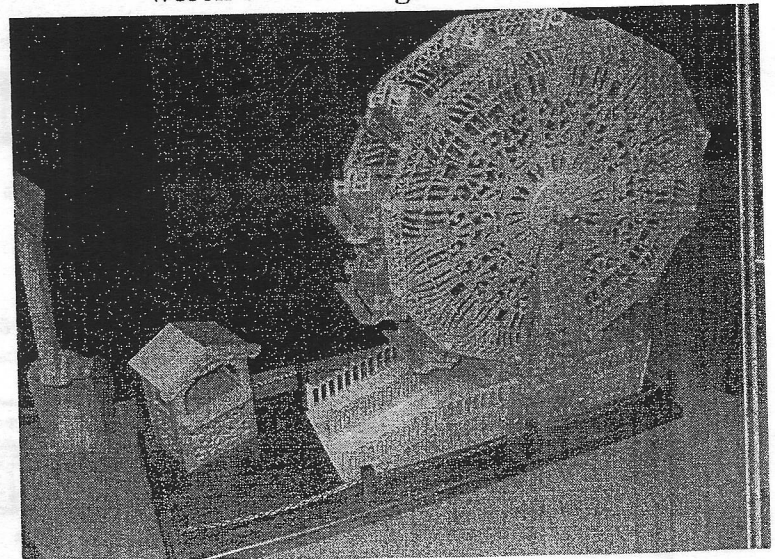
Left: This deck table, built by Rich Thomas, is made out of ipe (otherwise known as Brazillian Cherry). This table weighed about 80 lbs., according to Rich. It must have been built for a heavy plant!

Below: Gerald Blalock painstakingly scrolled this working ferris wheel from maple plywood, 1/2 inch solid maple, and walnut for the base. Gerald took two and a half months and 2,518 drilled holes to complete this project, an entry into the Fort Bend County Fair. He didn't win the blue ribbon so we suspect the judges weren't in their right minds.

NEWSLETTER DEADLINE

The deadline for the October issue will be Monday, September 29. If you have anything that you would like to submit to the newsletter, please do so by that day. If you have any questions, please call Justin Kelly.

Note: Submissions for the newsletter must be in digital format (no hard copies, please).



AUGUST PROGRAM ---

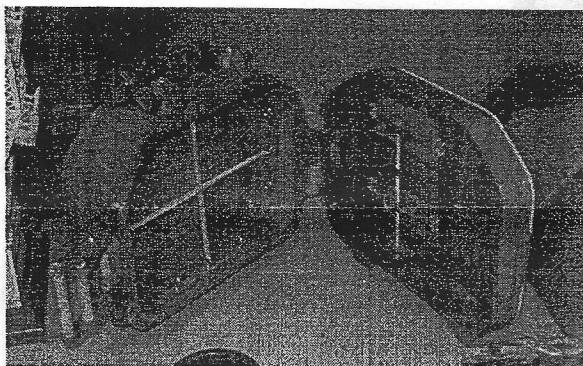
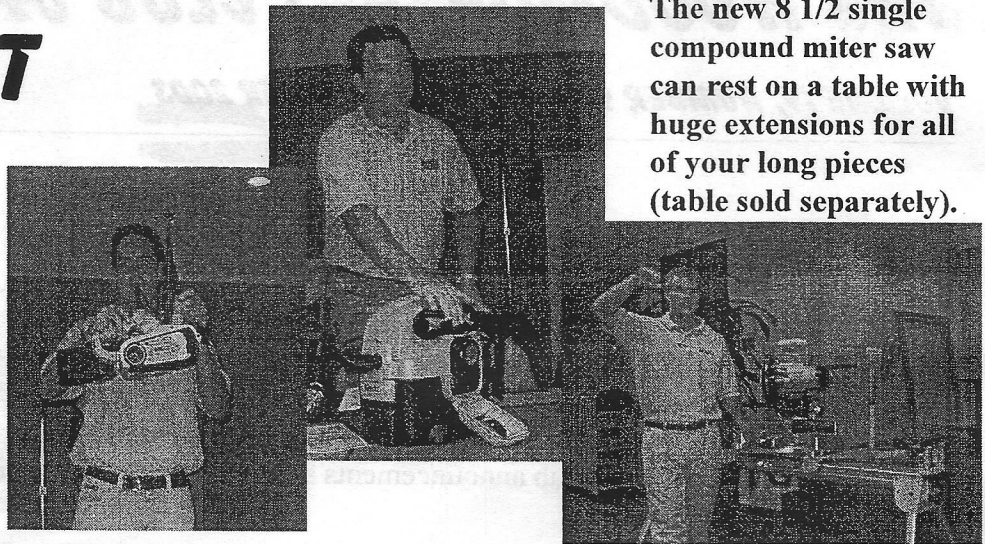
DEWALT

Right: Ivan, Alex, and Trey show off Dewalt's newest commercial power tools and products.

The new belt sander has variable speed, dust collector, etc.

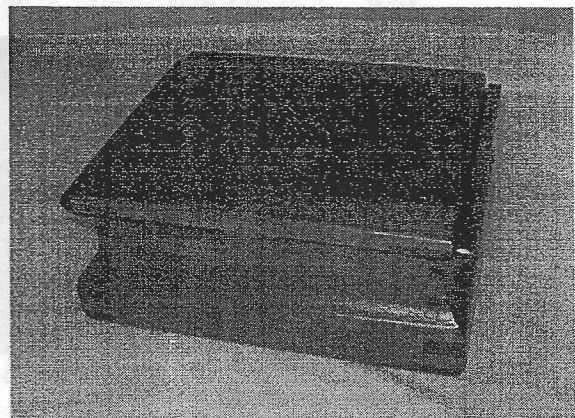
The cordless vacuum runs on the normal Dewalt batteries, or on a cord.

The new 8 1/2 single compound miter saw can rest on a table with huge extensions for all of your long pieces (table sold separately).



Above: This portable tool box was constructed from mahogany and maple by John Gay. All of the small drawers are beautifully crafted and fully removable and usable.

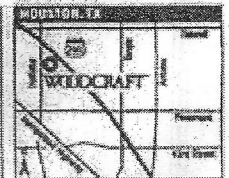
Below: David Vadewerker made this jewelry box out of mahogany. David also used a polyurethane finish on the box. He cut the box's curves on his table saw.



Visit Houston's Most Complete Woodworking Store!

- Carving Tools
- Workbenches
- Hardwoods & Exotics
- Sharpening Supplies
- Woodburning
- Vises & Clamps
- Files & Rasps
- Project Kits & Supplies
- Finishing Supplies
- Power Tools
- Planes • Saws
- Shop Accessories
- Routers & Accessories
- Woodboring Tools
- Sanding & Scraping
- Safety Equipment
- Marking & Measuring
- Cabinetmaking Supplies
- Woodturning
- Picture Framing Tools
- Clock Supplies
- Hardware • Chisels
- Books & Videos
- Classes & Demos

Directions:
 Traveling from the South, take 410 to NW corner and take 290 towards Austin. Exit at Hollister, make a left turn under 290 and make a right, into our parking lot. Traveling from the North, take 290 South and exit at Hollister. Travel through Hollister and turn right, into our parking lot.



Hollister Points Centre • 13155 Northwest Freeway • Houston, TX 77040 • Ph: 713-650-8608 • M - T - W - F: 9am - 7pm, Th: 9am - 6pm, Sat: 9am - 6pm, Sun: 11AM - 5PM

WOODCRAFT® Helping You Make Wood Work™

AT YOUR SERVICE

President:

Ken Kooser - 254-890-4099

Vice-President:

Paul Koury - 281-347-6309

Secretary:

Gary Rowen - 281-486-2013

Treasurer:

Todd Hall - 281-852-2388

Communications Director:

Justin Kelly - 281-357-0123

Director:

Art Chester - 281-379-1783

Director:

Joan Loggins - 254-729-3776

Director:

Jim Robertson - 281-263-2159

Director:

Al Morrow - 713-767-7749

Book Librarian:

Andrew Robinson - 281-286-5644

Video Librarian:

Blaine Stokes - 281-633-2939

Software & Literature Search:

Jack Hutchison - 281-493-2633

Saul Harris - 281-341-5377

Name Tags:

Joe Edelen - 281-437-5997

Coffee:

Loretta Buckley &

Bill Hochmuth

Web Master:

Gary Rowen - 281-486-2013

row1@sbglobal.net

Newsletter Editor:

Justin Kelly - 281-357-0123

justinkelly@swbell.net

REMINDER!!

Dues are \$24 per year.

Dues are prorated for
new members ONLY.

Renewing members in
September: \$24.

New members in
September: \$8.



BRANDLE'S SAWMILL

ROUGH SAWN
PINE AND
HARDWOODS

CUSTOM SAWING
AVAILABLE

LOGS UP TO 36"
DIA X 24'

13868
LAKELAND DRIVE
MONTGOMERY,
TEXAS 77356

936-597-4575

Discover the Art of

Hand Tool Woodworking

Homestead Heritage
- Woodworking School -

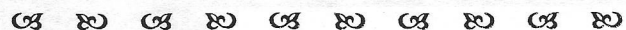
Elm Mott, Texas (10 miles North of Waco)

"Now Air Conditioned for your Comfort"

For Brochure and Class Schedule
Call: 254-799-1480

www.homesteadheritage.com

Be sure and ask about the discount for
WWCH members!

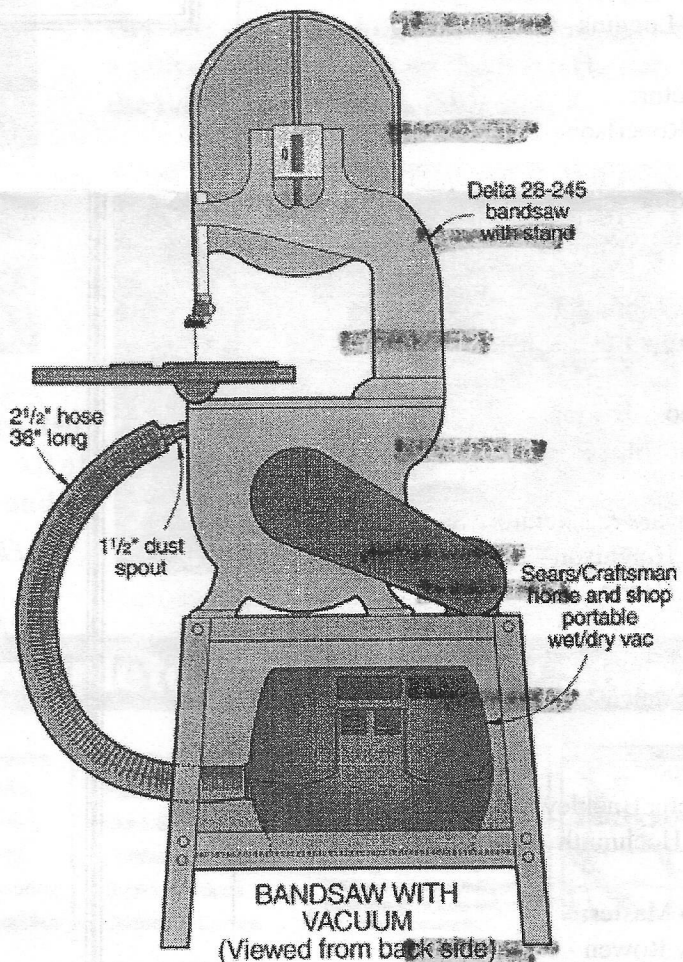
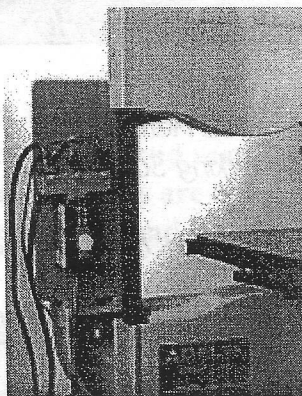
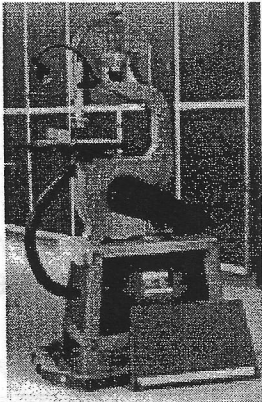


PROJECT OF THE MONTH --

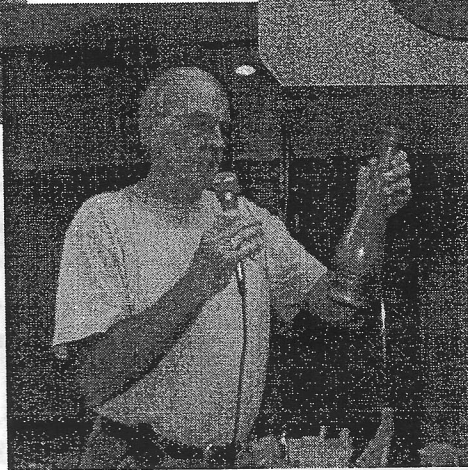
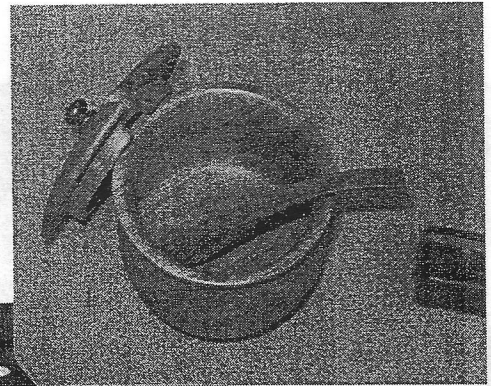
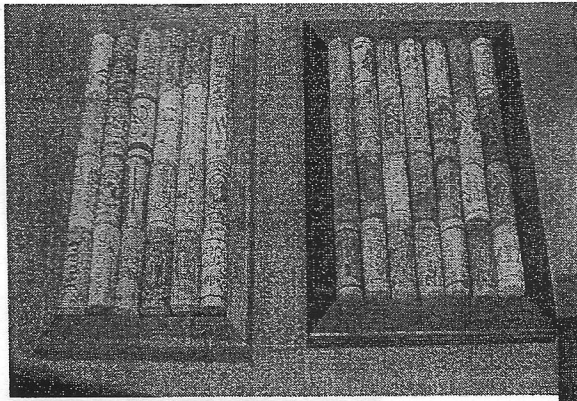
ONE SOUPED-UP BANDSAW

When building WOOD® magazine projects, we make each tool work extra hard. To make our bandsaw more efficient, we mounted a Sears outlet switch (part no. 60382, Division 9, source no. 113) and connected a three-outlet adapter to one end as shown in the photo left. By just flipping the one switch, we can turn the bandsaw, light, and vacuum all at one time on or off.

For dust control, we've fitted the base cavity of our Delta 14" bandsaw stand with a Sears Craftsman Portable Wet/Dry Vacuum (cat. no. 113.177571) as shown left. Then, we connected it to our bandsaw dust port with 2-1/2" flexible hose (we cut the 10'-long hose to 3') and adapters (cat. no. 16909). Although not necessary, we enclosed the vacuum to make it less noticeable and reduce the noise. If your bandsaw base doesn't have room for a vacuum, set the vacuum alongside and still make use of the switch and three-saw adapter.

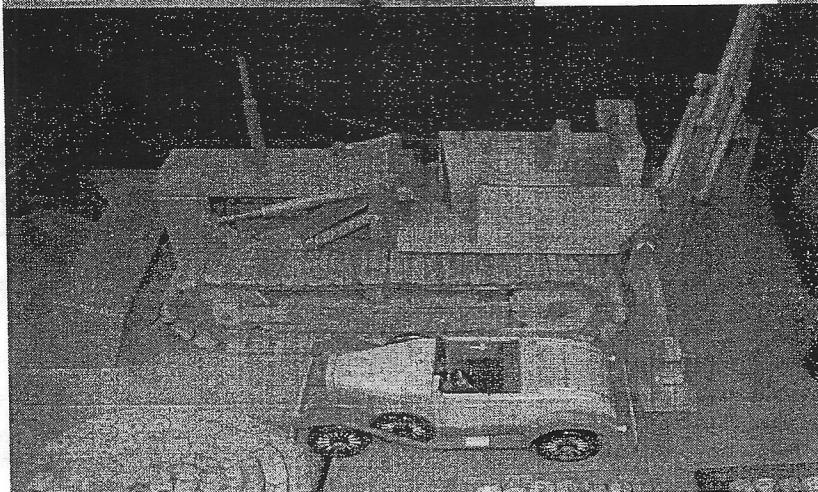
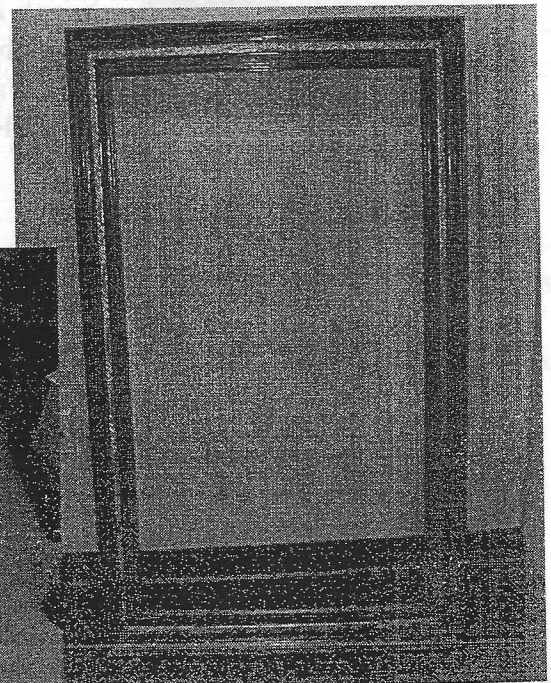
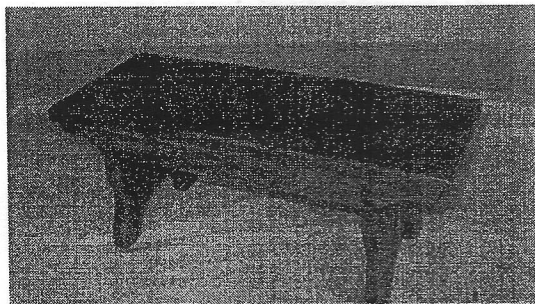


Reprinted with permission
by Wood Magazine.
www.woodmagazine.com.



Above: Gene Volentine made these trivets using leftover corks from his neighbor's wine bottles. Also, Gene turned this candlestand (right), a small bowl (far right), and a small clock (not shown). Gene was definitely keeping himself busy this last month. Great work on all of your projects, Gene!

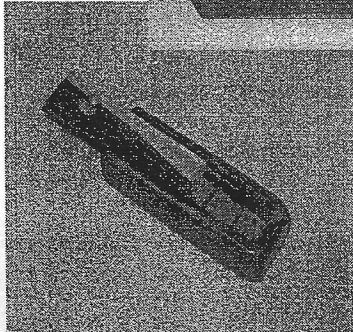
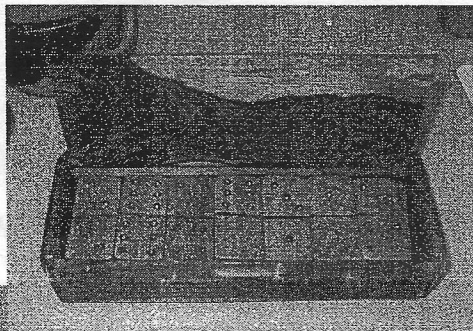
Below: All of these projects were created by long-time club member Denis Muras. First, the step stool (left) has a cherry top and a beech base. Secondly, the mirror frame (right) was shown in order to illustrate the usefulness of the gold moldings to give an antique appearance. In the bottom picture is Denis' finished 1929 Model-A car, and directly behind it is one of Denis' finest works - a bulldozer with completely workable wooden chain tracks. Excellent projects, Denis!



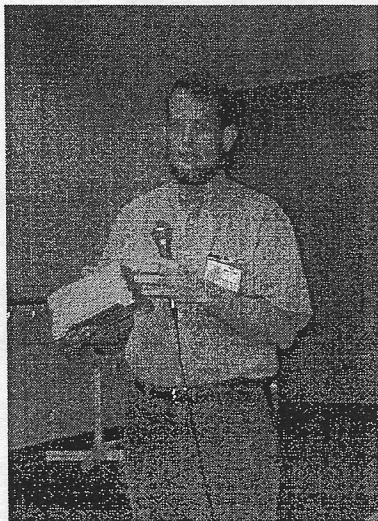
Want/For Sale

1. Jet Mini-Lathe. NIB Asking \$225
2. 10" Craftsman Miter-Saw in Excellent Condition. Asking \$75
3. 10" Delta Drill Press in Excellent Condition. Asking \$75 or \$125 for #2 & #3.

Eddie Thomas
Phone: 832-607-1630



Left/Above: These dice & domino cases were made by Frank Dorr from some imported wood from Costa Rica.



Left: Rob Brayton shows off his small jewelry box, made out of red oak. Rob used a Leigh jig in constructing the dovetails.

MAKE SURE TO CHECK OUT THE WWCH'S VIDEO & BOOK LIBRARIES. THEY ARE FREE TO ALL WWCH MEMBERS!!!!!!!!!!!!

Upcoming Programs

1. Titan Tool, Inc. - Our chance to learn about finishing equipment (Air Assisted, Airless, and HVLP equipment).
2. John Gay - program on how to chip carve
3. Design 1-2-3 - This company will be showing off their designs for pop-together furniture. Sounds intriguing!
4. Saul Harris - long time member gives a program on table saw safety.
5. Hitachi - demonstration of thier tools (will be offering discount to WWCH members)
6. Delta Tools - demonstration of their tools (will also be answering questions).
7. Circle Saw - program on table saw tune up and alignment
8. Bosch Tools - a mini tool fair including several give-away door prizes.

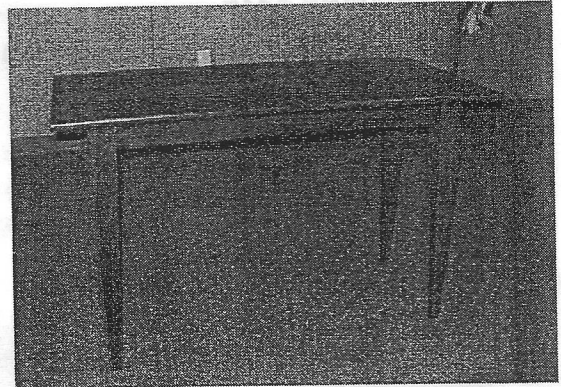
Additionally, long-time members Jack Hutchison & Fred Sandoval have agreed to present backup programs in the event of a cancellation. A big thanks goes out to these two for volunteering for "standby status".



Left: This two-piece chair was built at Todd Burch's Katy Splinter Group from a design by clum member Mike Turner.



Right: This table was also built by Todd Burch. The top is poplar & the legs are pine. It is all



covered with a cherry finish. Todd explained that the new table was built to hold his new laptop.

PREZ SEZ:

BY KEN KOOSER

I heard an interesting talk last night about how things the speaker's father had taught him and how he would teach his son. He said his grandfather taught his father to cut the yard with a schithe, but his father cut the grass with a push mower and taught him the same. He expects by the time his 5 year old son has a yard to cut, the EPA/OSHA will have outlawed power mowers as we know them. Other skills his dad taught him was how to replace a window pane. Using putty, but of course by the time he had a house the windows were aluminum. When he went into a hardware store to have a piece of glass cut, the kid running the place looked at him like he was an idiot. How lucky we are that our woodworking skills either with hand or machine tools are skills we can pass on that will never go out of fashion. To be sure, wood will be more expensive and scarce but I'm sure craftsmanship will not die. I guess the two things we can give our descendents are 1) embrace change, because it's the only constant and 2) never pass up an opportunity to learn something new. We still have a few shirts and have lots of hats with the "new" club logo. Our Picnic will be October 25, 2003 at the Baylands park. Plan on attending!!



713-686-6176

www.houstonhardwoods.com

FAX: 713-686-3217

4910 West 34th St, Houston, Texas 77092

Hours: M-F 7:30-5:00 SAT 8:30-12:00

DOMESTIC & IMPORTED HARDWOODS

Ash, Aspen, Basswood, Birch, Aromatic Cedar, Cherry, Cypress, Lacewood, Mahogany, Maple, Oak, Padouk, Pecan, Poplar, Purpleheart, Redwood, Sycamore, Teak, Walnut and more.

*Quality Domestic & Imported Plywood (Interior & Marine)

*Edgebanding & Veneer

*Butcher Block Tops

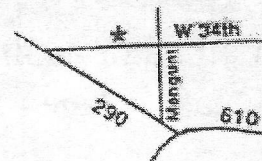
*MDF & Melamine

*Moulding

*PERSONAL SERVICE

*PROMPT DELIVERY

*ON-SITE CUSTOM MILLING



**WOODWORKERS CLUB OF HOUSTON
30630 QUINN ROAD
TOMBALL, TEXAS 77375**

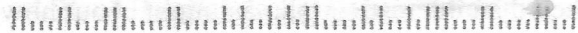


[Redacted Address]

CALENDAR OF EVENTS FOR SEPTEMBER:

9/12/03 - Meeting at the Bayland
Community Center - 9:00 A.M.

77062+2622



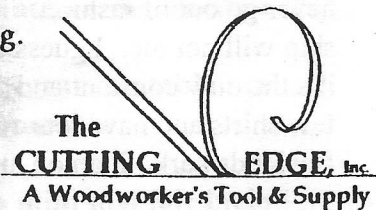
Featuring the Finest Tools The World Has To Offer

English Hand Tools By Record, Stanley, Henry Taylor, & Robt. Sorby.
Japanese Saws, Chisels & Stones By Gyokucho, Matsumura, and King.
Biesemeyer, Makita, Bosch, Starrett, Irwin, Olson, Jorgensen,
Magna-Set, Freeborn, Lie-Nielsen, & Inkra: All Made In The USA.
Canadian Chucks and Hand Tools By OneWay & Veritas.
European Tools by Freud, Tormek, Sjöberg, Stern, & Footprint.

PLUS: The Best Prices On JET Machinery Every Day!

We are an Authorized JET Service Center.

7123 SouthWest Fwy, Just North of Bellaire Blvd. (713) 981-9228



Mon. - Fri. 9 am to 6 pm
Sat. 10 am to 5 pm

NEWSLETTER ADVERTISING RATES

Full Page - \$50.00
Quarter Page - \$12.50

Half Page - \$25.00
Business Card - \$8.00