

Woodworkers Club OF HOUSTON

VOL. 9, NO. 9

SEPTEMBER, 1993

Officers

Bud Froelich - President 859-6620
Ted Kurland - Vice President 729-4693
Joe Wainright - Sec./Treasurer 666-8475

Board of Directors

Art Chester - 469-1990
Jack Conry - 463-7352
Denis Muras - 943-7745
Bill Smith - 356-6509

Sharon Buckley - Newsletter Editor 944-6739

AUGUST MEETING

Our guest speakers were Mark Walker, Bosch Representative and Brian Jackman, Skill Representative spoke to us about their tools, the merging of Bosch and Skill and also fielded questions from the membership.

The merging of Bosch and Skill makes them number one in the world and number two in the U. S.

Brian showed us Skill's new bisquit plate jointer, a member that owns one asked if they made an attachment to make the fence adjustable other than 90 and 45 degrees. Brian said that you could make a jig that would accomplish that task but because the majority of cuts are at the 90 and 45 degree and Skill wanted to make an affordable plate jointer that they had to sacrifice a variable fence to keep the Skill the lowest and most affordable plate jointer on the market.

There were alot of questions about cordless battery operated tools. When you purchase a cordless tool like a drill first decide what it will be used for--the battery life will depend on what you are drilling or driving. A 7.2 volt battery is good for intermittent use, a 12 volt battery has more power and longer battery life.

Always break a battery in ---always run it all the way down before you charge it for the first time. Cool down a battery before recharging it. Some manufacturers offer a 15 min. quick charge but this involves more heat and will wear a battery out sooner, one hour recharge batteries are the best. Some manufacturers have started to sell the cordless tool with two batteries, this way you will always have a charged battery, if you remember to keep it charged up. Once you use a cordless drill/driver you will wonder how you ever got along without one.

What happens if you need to repair an item? Skill and Bosch have merged their service centers and they are both now located at the Skill service center on Hempstead Highway.

If you have a question or need help give the service center a call they are there to answer your questions.

An interesting fact is that 75-80 percent of all Bosch tools are made in the U. S. and more are exported overseas than are sold in the United States.

We have plunge routers only because the European woodworker prefers them to a standard router and originally plunge routers were to be sold only in Europe and not in the U.S.

There will be more available to the consumer because of the merging of Skill and Bosch which will benefit us all.

We would like to Thank Brian and Mark for answering all our questions and listening to some suggestions that they said they would past on to the higher ups. Thanks again for your expertise and your time, it was appreciated by all.

GROUP PROJECT

Last month and this month we included an insert on this years charity project, the 62 footlockers for the Boys and Girls Harbour. In our zeal to get this project on the road we may have failed to explain about the Boys and Girls Harbour. This group is not a bunch of juvenile delinquents locked up to keep them from breaking into our houses but a bunch of kids that have delinquent parents.

We have collected about half of the amount that we need. We asked that you donate \$30.00 of course we will take more but we will also take what you feel you can or would like to donate. We want to get this under way because the cost of plywood and all wood is just going up. So if you would like to donate we really need your money as soon as possible. If we don't get enough we just won't have a charity project for 1993.

On this month's insert we have also added Zatis Murphy's workshop to the list of group sessions. Good news its already getting cooler!

LOS AMIGOS DEL MESQUITE SHOW

This will be the first year that this show will be held in Houston, you will not have to drive to Austin.

It sounds like it will be a very interesting show, they will have craft competition, special demonstrations and topic discussion by professional artisans and technical conference, which includes how to build a 6,000 bd. ft dehumidification kiln for mesquite, interior and exterior wood finishes, and many more, these will be hosted by commercial speakers from their representative companies. They will also have a Mesquite bar-b-que banquet, September 24 at 7:30.

The show will be at the Adam's Mark Hotel Exhibit Hall 2900 Briarpark Dr. at Westheimer
Thursday, Sept. 23, 3 PM to 9 PM
Friday, Sept. 24, 9 AM to 5 PM
Saturday, Sept. 25 9 AM to 5 PM
\$3.00 Admission to the Exhibition Hall

SAFETY -----Hand Tools----- BY Zatis Murphy

We think that the only dangerous tools in the shop have a motor to power them. But a lot of tools that have only our hands as the power take off can be dangerous if you don't use that gray matter and common sense.

Hand tools--utility knives, chisels, etc. always make sure that they are sharp, a dull tool will cause you to force it---never pull a knife towards you.

The first exception is the Draw knife, but this is a very dangerous tools.

The Hammer and the thumb seem always to meet with the thumber under the head of the hammer. When using a hammer always wear safety glasses, because you could lose an eye.

Hand saws--watch out for fingers--with a hand saw you could use gloves. You can also use a Japanese saw as they cut on the pull stroke and use less brute force to cut a very fine kerf.

When using a wrench make sure it is the correct size.

Pliers and cutters check that the bolt holding them together is tight.

Screwdrivers--make sure that the tip is still good and not worn.

Heavy clamps always seem to jump off of the workbench--so watch out for those toes.

We all have a shop full of items that can cause injury.

THINK FIRST--BE CAREFUL--HAVE FUN !!!!!!!!!!!!!

FEATURE OF THE MONTH--ANYTHING ROUND

Bud Froelich showed us his first table that he made 10 years ago. One suggestion besure you place those bisquits inside the round and not at the edge or they will show.

Don Sloan made an Ash bowl from a felled tree in his backyard.

Chuck Maxwell made segmented bowls finished in Bartley's.

Lewis Vallette made a segmented turning out of 6 different woods, 144 individual pieces glued together and hollowed out on the inside.

SEPTEMBER'S FEATURE OF THE MONTH

Septembers project will be Children's Furniture--cradles, strollers, high chairs, furniture, etc.

SHOW AND TELL

Ed burger showed us a new style of wooden turned pens and pencils--FAT--these are 1/4" thicker than the normal pen. The cap removes for use.

Zatis Murphy scroll sawed a U. S. map with four clocks for the different time zones. Map was made out of Padouk and the pattern came from a Rand Mc Nally Atlas.

Ted Curry made a replica model of the Spanish Galleon Isabella.

Denis Muras has finished his back hoe model and will publish plans soon.

FOR SALE

1 inch thick by 4 inch wide (true finished size) appx. 57 and 1/2 feet of Maple in a bundle. Each bundle has 8 pieces 41"-43", 2 pcs. 36", 2 pcs. 26" -29", 3 pcs. 17"-18", 3 pcs. 16", 9 pcs. 14"-14 1/2". \$35.00 a bundle. Sharon Buckley day phone 991-3860 if you wish to buy a bundle call me before the meeting and will bring it to the sept. meeting.

OFFICERS FOR 1994

Can you believe that we will be nominating Officers for the 1994 Year next month in October. If you would like to serve as President, Vice-President, Secretary/Treasurer or a Board Member please speak to one of the Officers. Its really not hard and can be lots of fun. And if you are asked to serve please don't say NO, just say Yes.

We vote in November.

NEW ADVERTISER

We would like to introduce a new advertiser to our newsletter Woodworking Unlimited in the Northbrook Shopping Center 5360 West 34th.

Most us already know Mark and his crew and welcome them to our club.

We would like to Thank them for their support.

Remember members the advertisers support our club and we can support them with our wood and tool purchases.

SEPTEMBER MEETING

WHEN: SEPTEMBER 11, 1993 9:00 A. M.

WHERE: BAYLAND COMMUNITY CENTER
ON BISSONNET AT HILLCROFT

1993 CHARITY PROJECT 62 FOOTLOCKERS FOR THE BOYS AND GIRLS HARBOUR

THE FOLLOWING IS AN OUTLINE OF HOW WE PROPOSE TO MAKE THESE BOXES.

FIRST WE NEED A DONATION FROM THE MEMBERS---EACH BOX WILL COST \$30.00. THIS INCLUDES ALL OF THE MATERIALS, THE PLYWOOD, THE FASTENERS, HARDWARE AND FINISH.

TO SAVE MATERIAL AND MAKE THE BOXES EASIER TO BUILD WE WILL PURCHASE ALL OF THE PLYWOOD FROM ONE SOURCE--HAVE IT DELIVERED TO SHARON'S SHOP. A GROUP WILL GET TOGETHER TO MAKE UP KITS. ALL OF THE PLYWOOD WILL BE CUT AND RABBETED. WE WILL MAKE UP 62 KITS FOR THE MEMBERS. THIS WAY WE CAN GET 5 FOOTLOCKERS OUT OF 3 SHEETS OF PLYWOOD. SINCE ALL OF THE MACHING WILL ALREADY BE DONE, ALL A MEMBER HAS TO DO IS ASSEMBLE THE KIT, WHICH INCLUDES CHECKING FOR SQUARENESS, DRILLING COUNTESINK HOLES AND INSTALLING THE SCREWS, HANDLES, HARDWARE AND APPLY A CLEAR OIL FINISH.

WE HAVE A SAMPLE BOX MADE UP THAT WE WILL BRING TO THE MEETING FOR DEMONSTRATION.

TO MAKE IT AS EASY AS POSSIBLE WE WILL ALSO SET UP GROUP SESSIONS IN MEMBERS SHOPS TO ASSEMBLE THESE BOXES. THE FOLLOWING MEMBERS WILL BE HAVING THESE GROUP SESSIONS:

DON SLOAN'S SHOP JUST NORTH OF THE NORTH LOOP.

CHUCK MAXWELL'S SHOP BETWEEN HWY. 290 AND BELT WAY 8.

JIMMIE HARP'S SHOP INSIDE THE SOUTH LOOP ON THE EDGE OF BELLAIRE.

BILL HOCHMUTH'S SHOP JUST OUTSIDE THE SOUTH LOOP.

SHARON BUCKLEY'S SHOP OFF THE GULF FREEWAY AND ALMEDA GENOA.

ZATIS MURPHY WAYOUT 290 IN CYPRESS, TEXAS

NO EXCUSES ---WE HAVE MADE THIS AS EASY AS POSSIBLE.

WE NEED YOUR HELP BUT IF YOU CANNOT PARTICIPATE BY ASSEMBLING A BOX WOULD YOU PLEASE AT LEAST DONATE TO THE CHARITY PROJECT.

PLEASE FILL IN THE FOLLOWING SIGN UP/DONATION SHEET IF YOU CAN HELP IN ANY WAY--FILL IN THE SPACES THAT APPLY TO YOU AND PLEASE ATTACH A CHECK. IF WE DO NOT GET ENOUGH MONEY WE WILL RETURN YOUR CHECK.

MEMBERS NAME	PHONE	WISH TO ASSEMBLE A BOX	WANT TO ASSEMBLE A BOX IN A GROUP	WISH ONLY TO DONATE MONEY

IF YOU WOULD LIKE TO WORK IN ONE OF THE ABOVE GROUPS PLEASE SPECIFY WHICH ONE _____

IF YOU WOULD LIKE TO HOST A GROUP WE WOULD LIKE TO HAVE ONE OR MORE AVAILABLE _____

BECAUSE OF THE RISING COST OF PLYWOOD WE MUST PURCHASE THE MATERIAL AS SOON AS POSSIBLE.

MAKE CHECK PAYABLE TO WOODWORKERS CLUB OF HOUSTON. MAIL TO W.W.C. P.O. BOX 34481 HOU. 77234 OR BRING THIS FORM AND CHECK TO THE AUGUST MEETING.

Pasadena Industrial Supply

Delta Unisaw Special Edition



LIMITED QUANTITY!! This special edition 3 hp unisaw is the same model we have been selling for year with a small difference, this version **does not** have the LVC control. 52" uniface is std equipment as is the motor cover and all the other quality items that make a Unisaw the most desired table saw in the U.S.

Delta #36-820 3hp unisaw 230v with 52" uniface
Table boards not included

222 West Pasadena Freeway, Pasadena Texas 77506 472-5588



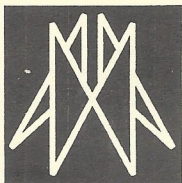
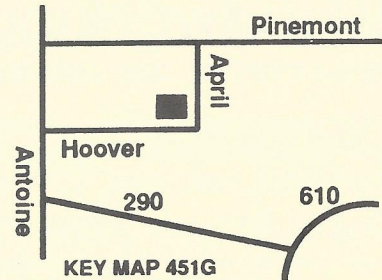
5117 April Lane, Houston, Texas 77092
Hours: M-F 7:30-5:00 SAT 8:30-12:30
(713) 686-6176 Phone
(713) 686-3217 Fax

DOMESTIC & IMPORTED HARDWOODS

Ash, Basswood, Birch, Cedar, Cherry, Cypress, Mahogany, Maple, Red Oak, White Oak, Padouk, Poplar, Purpleheart, Redwood, Sycamore, Teak, Virola, White Pine, Walnut, and More.

High Quality Domestic & Imported Plywoods, Softwoods, Hardwood Veneer Edgebanding & Hardwood Veneers
Excellent Service & Competitive Prices!

ON SITE CUSTOM MILLING TO YOUR SPECIFICATIONS, S2S, S2S1E, S4S
(No order too large or too small) 10/93



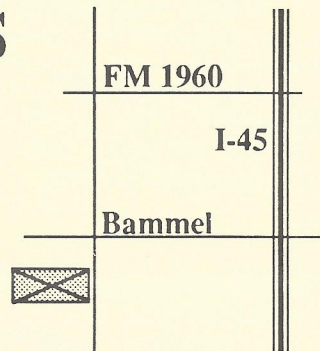
AUSTIN HARDWOODS

13001 VETERANS MEMORIAL DR.
HOUSTON, TEXAS 77014

440-0764

We stock over 80 species of lumber including rare exotics and turning stock. Plywood, Veneer, Moulding, Flooring, Tools, Millwork, Paneling Etc. also available

Exp. 2/93

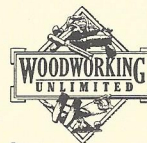


WOODWORKING • UNLIMITED™

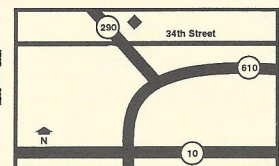
THE EQUIPMENT, THE TOOLS, THE ACCESSORIES, THE WOOD, THE HOW-TO INFORMATION, AND MOST IMPORTANTLY, THE ENCOURAGEMENT. THE WORKS.

Service
Selection
Quality
Value
Education

- ◆ FREE Woodworking Classes
- ◆ Frequent Shopper Discount for Wood
- ◆ Large selection of hardwoods & exotic woods
- ◆ Make your own sawdust - try out the equipment
- ◆ Expert advice and instruction



Mon-Fri: 10-8
Sat: 10-6
Sun: Noon-5



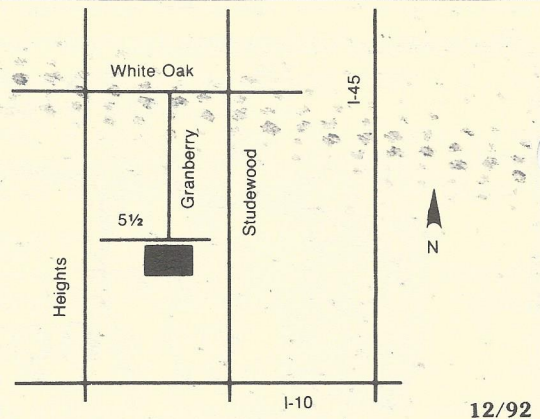
Northbrook Shopping Center
5360 West 34th St. • Houston, TX
(713) 681-5200

HARDWOOD LUMBER CO.

700 E. 51/2 St. (In The Heights)
Houston, Texas 77007
(713) 862-6628
Hours: M-F 7:30-5:00, Sat. 8:30-1:30

We stock over 65 species of lumber including
hard to find exotics!

Also: Plywood, Veneer, Moulding, Formica,
Custom Milling, Woodworking Tools, Books, etc.



12/92

Send Today for the Most Complete Catalog Selection of Woodworking Supplies

Please Enclose \$1.00 (3rd class) or \$2.00 (1st class)

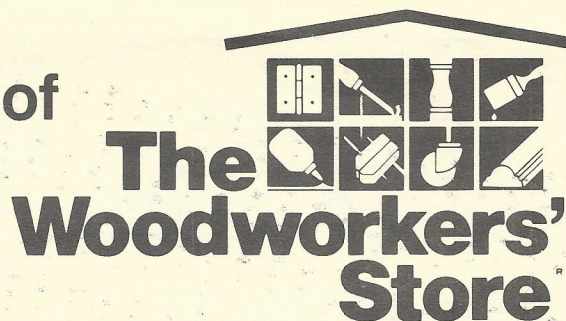
Name _____

Address _____

City _____ State _____ Zip _____

Orders Shipped Within 48 Hours

7/93



21801 Industrial Blvd., Rogers, MN 55374

PRINTED BY SPEEDY PRINTING SERVICE OF TEXAS 3433 WEST ALABAMA, SUITE C • HOUSTON, TEXAS 77027 • 713-877-8466

Woodworkers Club of Houston
P.O. Box 34481
Houston, Tx 77234

