

Woodworkers Club

OF HOUSTON

VOL. 6, NO. 9

SEPTEMBER, 1990

Officers

Don Richardson - President 661-1365
Ted King - Vice President 351-6808
Claude Emory - Sec./Treasurer 861-3495
Sharon Buckley - Newsletter Editor 944-6739

Board of Directors

Bill Baker - 667-8381
Bob Gallant - 376-0276
Bill Hochmuth - 774-1733
Bill Sallans - 465-0291

AUGUST MEETING

The August program was presented by our own Don Sloan on The Art of Boxes Small and Large.

A box looks simple--sides a bottom and a top but if that box is not proportioned properly it will not have a pleasing look.

The basic cube is 2 x 2 x 2 or double cube 2 x 2 x 4.

Don prefers working in Hardwoods, he finds that the harder the wood the easier it is to work. He also uses a lot of Dunnage or as some say Road Kill Wood (free). A lot of the dunnage is red or white oak, some poplar and sycamore. The first thing you have to check for is nails, screws, staples, rocks and any foreign matter in the dunnage or you'll have some missing teeth or chipped blades.

Don resaws his wood on a shopsmith bandsaw using a 1/4" 6 TPI Hook tooth blade. You might ask how does he get good results with a 1/4" blade---by making sure that his bandsaw is tuned to run true. A few years back he was having trouble achieving these results with his Shopsmith bandsaw because every magazine normally demonstrates on a Delta or a Delta look a like on how to tune up a bandsaw. But the shopsmith bandsaw requires a different approach to achieve a true running blade--not that its any harder to tune up just different--if your having a problem you should ask Don to explain.

Don uses an all purpose wooden box jig for cutting the 45 degree angles. Some of his tips for a perfect box: make sure your table saw fence is tight, the table saw insert is tight not just dropped in place, you should use a hold down for the wood, when checking his blade for the 45 or 90 degree cutting he uses a drafting Triangle Square (available at Art supply stores or more blueprint shops--these are also available in fluorescent green or orange--not as easy to loose in your shop).

Dons preferred joint is the 45 degree, but you

can Butt joint, finger joint or use a dovetail joint to make a box.

The box lids were adorned with Ducks or Whales made up of different woods. He cuts three at a time, stacking three different types of woods, after cutting them out on a bandsaw he mixes the different woods to achieve three ornaments with the same shape but different wood pieces--making them look like each piece was cut out seperately.

When cutting on the bandsaw let the wood feed through the blade do not push or you will distort the blade and the other two cuts will not be square. He then assembles the pieces with epoxy (Don's tip for mixing epoxy--don't just blend but whip the epoxy for at least a minute--then assemble real fast on wax paper).

Don glues up all the pieces to the box be careful how you apply the glue and how much, as when you glue on the final piece you can not get inside the box till you cut off the lid. When you cut off the lid be sure to use spacers taped to the box to keep the lid from closing up on the tablesaw blade.

You can also make a raised panel , beaded , overlay or cove for the lid.

Don uses a velvet insert to finish the interior of his boxes. Cut out a piece of cardboard 1/16 of an inch smaller, spray adhesive on the velvet , place the velvet on the cardboard, roll out any air pockets and trim.

Don uses web clamps to hold the glued up box together but recommends throwing away the weak metal corner brackets that come with the clamps and get some aluminum angle, which is light but strong and have a true 90 degree angle between legs.

Sometimes he uses a spline jig for the table saw with adjustable sides to fit various fences, the plans can be found in Woodsmith No.44 page 9 April 1986.

Don finishes his boxes with Watco Oil, soak it wipe it off, recoat, the next day apply more oil with wet/dry sandpaper which makes a slurry to fill the pores---wait 3 days and wax. If you

don't want to wax you can finish with a varnish.

Don estimates that from start--rough wood to finish it takes him about 7-8 hours per box.

Don says that in the past he has made many of these boxes for Christmas gifts--we all want to know where to sign up to get on his list.

The members and officers all want to thank Don for such a great program and for all his time spent in helping this club progress to where it is now. Well done !!!! Well done!!!!

CHARITY SHOW AND SALE

It doesn't seem like it but its just around the corner and we need lots and lots of merchandise. Remember Oct. 26th and 27th at the Greenspoint Mall and be sure and tell your friends. Bill Sallans will have a flyer for the members to hand out or post in the neighborhood stores that have spaces available for these announcements. Also if you have any contacts or ideas for free advertising please let Bill Sallans know. I just read in the Newest Woodworkers Journal in there calendar of events a write up about our sale.

Bill Hockmuth is asking the members to store their own donations till the October meeting but if you can't he will find a storage place. Also if you are going to help set up Friday morning would you please bring your projects then. We have looked into a storage place but they are just to expensive, so if everyone helps out--NO Problem.

GROUP PURCHASES

We are still looking for someone to ramrod the group purchases committee--if you are interested please talk to Don Richardson.

FIELD TRIP

Ted King has the field trip all set for September 15th at 10:00 A. M. The program is on Restoring Antique Airplanes and reproducing Airplanes. Antique airplanes required a lot of woodworking skills not like todays aluminum cans. There is a map included in this newsletter, from Houston it should take about 45 to 60 minutes to get there (depending on where you live) and how heavy a foot you have. Spouses are invited and there is a good Chinese-American restaurant in the area for lunch--The Golden Pagoda. Hope we have a good turn out--see you there!

OFFICERS FOR 1991

The officers and board of directors are making their list --checking it twice -- and will begin calling on the members to serve their club in 1990. Wouldn't you like to serve as President, Vice-President, Secretary-Treasurer or a Board member if so let us know. Nominations will be presented before the

membership in October and voted on at the November meeting.

ANNUAL DINNER AND SHOW AND TELL

The Dinner is scheduled for Friday December 7th, 1990 at the Rice Faculty Club on the Campus of Rice University--the sight of the Economic Summit. Cocktails at 7:00, Dinner at 8:00, and the 1990 Best of show--Show and Tell. This year the Dinner will be \$15.00 for Club members and member's spouse--to keep the cost down we will have to charge any non-member \$20.00 a person. We will have further information in the October Newsletter.

WOODWORKING WORLD SHOW

This years woodworking world show will be March 1st thru 3rd at the Pasadena Convention Center. We have been asked to display some of our woodworking expertise and to promote the Woodworking Club of Houston. If you would like to show off your talents we will have further information as the show approaches.

LOS AMIGOS DEL MESQUITE

The Los Amigos Del Mesquite is holding their 1990 Mesquite Furniture, Craft, Sculpture and Turning Competition September 29 and 30 at the Wyndham Southpark Hotel in Austin Texas. The emphasis of the LADM Mesquite show obviously center around mesquite. Consequently, the majority of the work displayed must be fashioned of mesquite or mesquite by-products; however, a reasonable number of products fashioned from other native Texas timber will also be on display. Lumber, machines, tools, and cooking wood displays.

A local source fo mesquite is the Lonesome Dove Mesquite Works at 8734 Daffodil Suite A Houston, Tex. 77063 784-3828.

SHIRTS AND CAPS

The Shirts and Caps should be ready at the September meeting. The cost of the caps will be \$5.00. See Claude Emory.

WORKSHOPS AND CLINICS

A workshop was held after the August meeting on Chip carving , the instructor was Joan Brueggeman. The members that attended were real pleased with what they had learned and are hinting that they would like to have another session. Thanks Joan !!!!!!!

BUY AND SELL

Ronnie Derks is selling a Ring Master complete with motor. This units cuts rings which you glue up to make bowls.

SHOW AND TELL

Leo Orinderff showed us some Tic Tac Toe boards and x's and o's that his woodworkers from the Pyramid House made for the Charity show. Stuart Murphy donated 100 pcs. of 1/2" Baltic Birch for Leo's group to use, 75 will be available for sale at the show and 25 remains for the Pyramid House.

Denis Muras made a Dinosaur of black Walnut finished in 3 M's new finish. Plans from David Wakefield toy book.

Dan Shaklovitz had a rocking chair made out of the bowling alley maple finished in Bartley's, Dan is donating the rocking chair to the Charity show.

Robert Sandlin had 238 wooden blocks for the charity show.

Joan Brueggeman made a box for her husbands chip carving and layout tools for when he travels.

Ed Smith had a Walnut clock and shelf finished in Bartleys for the charity show.

There was an interesting Poplar and Birch Clock donated to the Charity Show.

One member made a dovetail jig from Woodsmith Plans, a jointing plane and a chess/backgammon set from a kit.

PROBLEMS AND SOLUTIONS

The members are still having problems with their Craftsman Sander, this model was an orbital sander driven by a belt that kept breaking. Sorry but no one had any real good solutions.

Stuart Murphy suggested that when making inserts for your table saw that you use PVC, as this is not as brittle as some woods. He said that he takes 8" PVC pipe cuts it in two pieces and heats it till it flattens while cooling you place the curved side down with a weight on top. WARNING !!!!!!!!!!!!!!! We had many members that said a odorless toxic gas can result from heating PVC at too high a temperature---we would suggest that you buy PVC sheet goods and never--we repeat NEVER heat PVC in an enclosed area like your kitchen---BE carefull----

One member wanted information on Dust Collectors. The availability of Dust Collector are too numerous to mention, we suggest that you look at the woodworking magazines that have done comparison on the different models.

DUST COLLECTION SYSTEMS

Do to a lack of time at the meeting it was suggested that the member talk to other members to find out about Dust Collectors and Dust Collection Systems.

This newsletter would be perfect for us to

share what we have as individuals found out about Dust Collection Systems.

Charts and graphs are fine but its best is to learn from experience.

I will start this month off on what I have gathered from using two different systems, one PVC and the other Sheet Metal Piping.

First a Dust collection system can not be substituted for a Respirator, with certain carcinogenic woods (cancer causing woods) the best rule of thumb for using a respirator--if its exotic use a mask. Even oak is loaded with tannin which is used for tanning hides.

The label Dust collection is not all that will be picked up through a collector--those chips from a planer can fill up a system fast, also those strips of wood, small cut off pieces that fall through the table saw insert can clog up a system. Chuck Maxwell has installed "Y's" in his system, one branch of the Y has a wooden plug that he can easily remove and clean out any long strips that can clog a system.

Whether your using PVC or metal piping it will clog, when planing wide boards over 12 inches wide, the planer throws out so many large chips that I have to remove the screws from the piping and clean it out. The table saw is the other source for clogging up the system, so make these two areas easy to clean out.

The main question is should I use PVC or Metal Piping. PVC is easy to work with, it fits together well enough that all you need are some small screws just to hold it together. Its readily available at you home improvement center. PVC comes in different Schedules (wall thickness), the fittings must be in the same sch. or they will not fit. Sch. 20 is half the wall thickness of Sch. 40, which also makes the price different and the weight of the pipe different. See what your budget can afford and the availability in your area. Chuck's system is sch. 20 and he has had no problems.

If you use PVC, it is recommended that you use a copper grounding wire to eliminate static build up. Some say to place the wire inside the pipe, but I have heard that this just helps to clog up the system, the copper wire can be wrapped around the outside of the pipe--remember at the joints leave extra wire if you have to disassemble the pipe.

Because of the map in this issue this is all the space we have this time. Do you have any ideas on Dust Collection Systems, Do you have a Dust Collector you like or hate, we would like to expand on this in future issues. Please let me know.

SEPTEMBER MEETING

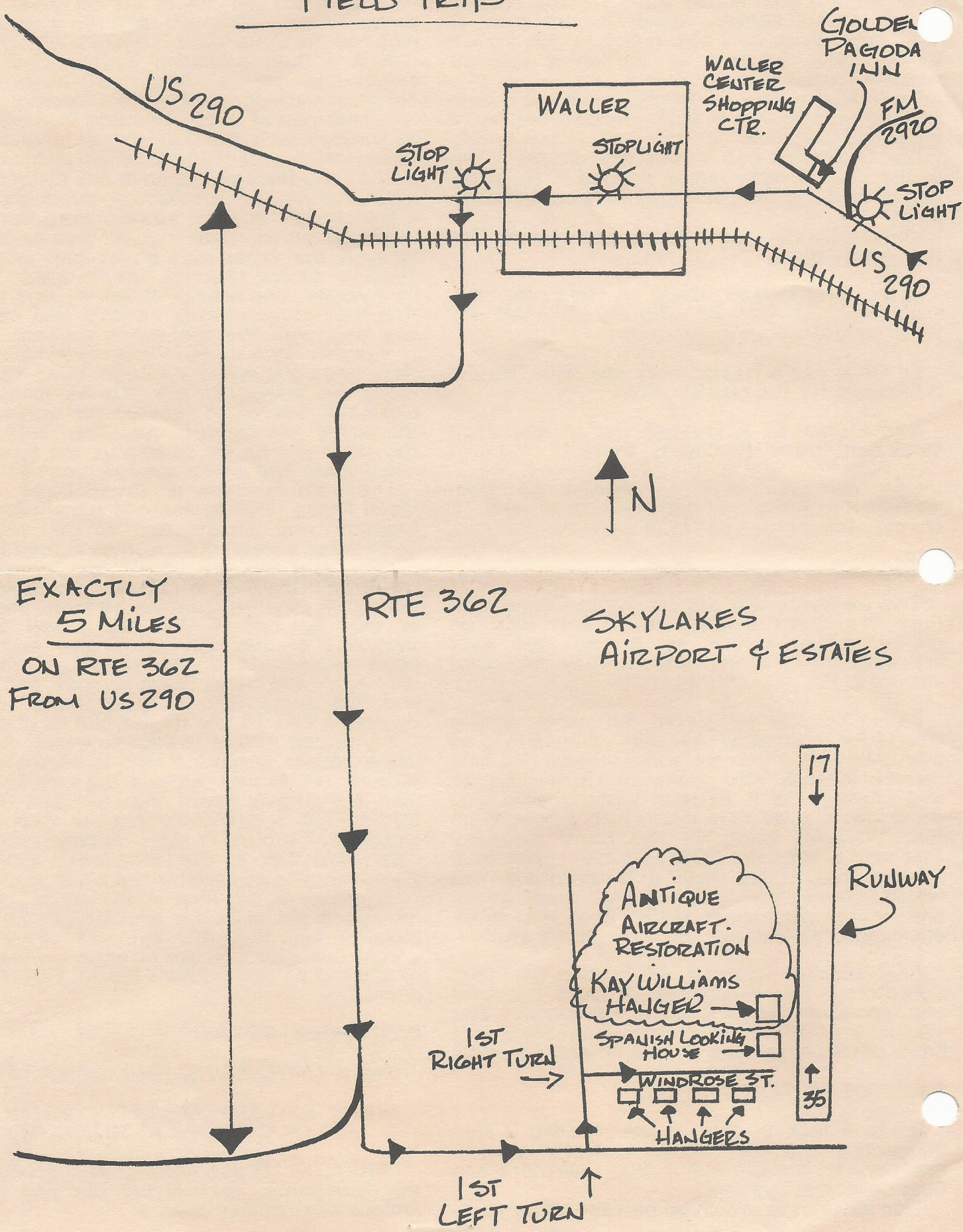
WHEN: SEPTEMBER 8, 1990 9:00 A. M.

WHERE: BAYLAND COMMUNITY CENTER
ON BISSONNET AT HILLCROFT

PROGRAM: Stuart Murphy and friends from the Renaissance Festival will talk and sing on Antique Musical Instruments.

SEPTEMBER 15, 1990 TIME 10:00AM

FIELD TRIP



315-1
P 119

Pasadena Industrial Supply



Skil 12volt Top Gun Battery Drill

Power Tool & Accessory
Headquarters for;
Delta Machinery, Porter-Cable
Milwaukee, Hitachi, Bosch,
Makita, Skil. Safety-Speedcut
& More!

\$129

Skil# 2735-04

- 12volt system gives longer run time & higher torque
- Extra Battery pack, charger & case included
- Adjustable slip clutch reduces stripping of small fasteners
- Variable speed over 2 gear shifted ranges

Extra Battery Pack Included!

222 West Pasadena Freeway, Pasadena Texas 77536 472-5588

Hardwood Lumber Co. Lawndale Division Imported and Domestic

Quality
Hardwoods - Softwoods - Plywoods
Mouldings & Squares

A COMPLETE SELECTION OF FINISHING SUPPLIES.

Marine Plywood
Parana Pine
Teak

Honduran Mahogany
Exotic Hardwoods
Domestic Hardwoods
WALNUT - BIRCH - ASH - CHERRY
CYPRESS - RED AND WHITE OAK
AND OTHERS

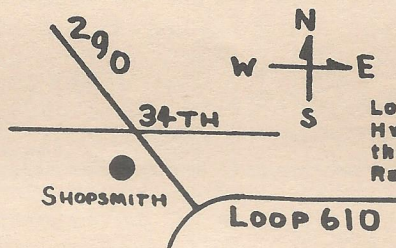
MON. - FRI. 7:30 TO 4:30
SAT. 8:00 TO 1:00

5401 Lawndale
(713) 921-6131

Exp. 12/90

Your Complete Woodworking Center Check Out Our Hardwoods, Our Prices Are Low

Hours:
Monday to Friday:
10:00 a.m. to 8:00 p.m.
Saturday
9:00 a.m. to 5:00 p.m.



Shopsmith Inc.

Located at 34th St. &
Hwy. 290 to Austin on
the West side in the
Randalls Strip Center.

Northway Shopping Center
10965A Northwest Frwy.
Houston, TX 77092
Phone: (713) 681-5200

Exp. 1/91



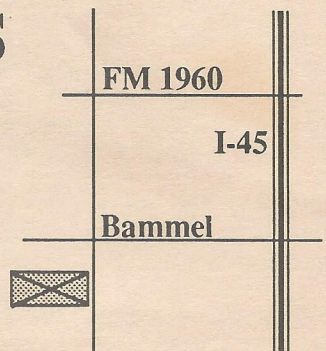
AUSTIN HARDWOODS

13001 VETERANS MEMORIAL DR.
HOUSTON, TEXAS 77014

440-0764

We stock over 80 species of lumber including rare exotics and turning stock. Plywood, Veneer, Moulding, Flooring, Tools, Millwork, Paneling Etc. also available

Exp. 8/89

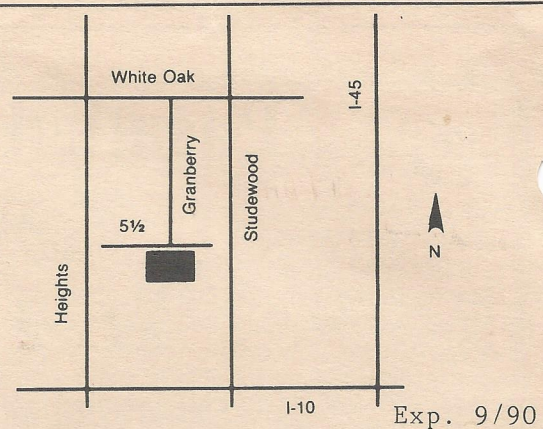


HARDWOOD LUMBER CO.

700 E. 51/2 St. (In The Heights)
Houston, Texas 77007
(713) 862-6628
Hours: M-F 7:30-5:00, Sat. 8:30-1:30

We stock over 65 species of lumber including
hard to find exotics!

Also: Plywood, Veneer, Moulding, Formica,
Custom Milling, Woodworking Tools, Books, etc.



Send Today for the Most Complete Catalog Selection of Woodworking Supplies

Please Enclose \$1.00 (3rd class) or \$2.00 (1st class)

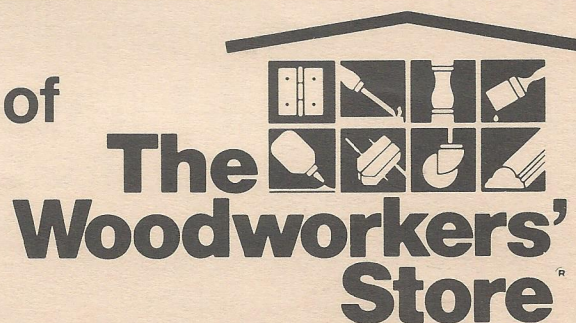
Name _____

Address _____

City _____ State _____ Zip _____

Orders Shipped Within 48 Hours

Exp. 1/91



21801 Industrial Blvd., Rogers, MN 55374

PRINTED BY SPEEDY PRINTING SERVICE OF TEXAS 3727 W. ALABAMA, HOUSTON, TX. 77027 (713) 877-8466



5117 April Lane, Houston, Texas 77092

Hours: M-F 7:30-5:00 SAT 8:30-12:30

(713) 686-6176 Phone

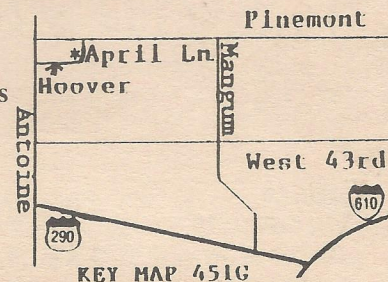
(713) 686-3217 Fax

DOMESTIC & IMPORTED HARDWOODS

Ash, Basswood, Birch, Cherry, Mahogany, Maple, Red Oak, White Oak,
Poplar, Walnut Etc.

High Quality Domestic & Imported
Plywoods, Softwoods, Hardwood Veneer
Edgebanding & Hardwood Pliable Veneers
Excellent Service & Competitive Prices!

ON SITE CUSTOM MILLING
TO YOUR SPECIFICATIONS,
S2S, S2SIE, S4S
(No order too large or small)



Expires 8/91

Woodworkers Club of Houston
P.O. Box 34481
Houston, Tx 77234

