

Woodworkers Club of Houston

October 2004 • Volume 20, No. 10 • www.wwch.org

WWCH Annual BarBeCue to be held next weekend.

Our annual BBQ event will be held next Saturday, October 16, at the Baylands Community Pavilion, 6400 Bissonnet, between 11:00 am and 3:00 pm. There will be over \$1500.00 in new tools that will be awarded in raffles, auctions and prizes! You must be present to win.

Tickets are \$8.00 for individuals and \$15.00 for couples. This price includes a meal and one raffle ticket. A bargain! But you must plan ahead and buy your ticket on or before the Club meeting on Oct. 11. This Saturday will be our last day to take orders and get a food count before we buy provisions. For

this reason tickets will not be available at the door. Meals-to-go will be the same price and must be ordered ahead of time.

Other events include a sawdust scramble, belt sander races, Moonwalk for kids and other fun contests and games. As members know from past experience this event will be held rain or shine.

If you can't be at the Club meeting this Saturday and want to attend the BBQ mail a check today to Al Morrow at 502 Aurora, Houston, TX 77008. Questions? Call Ken Kooser at 713. 725. 3754 for the answers.

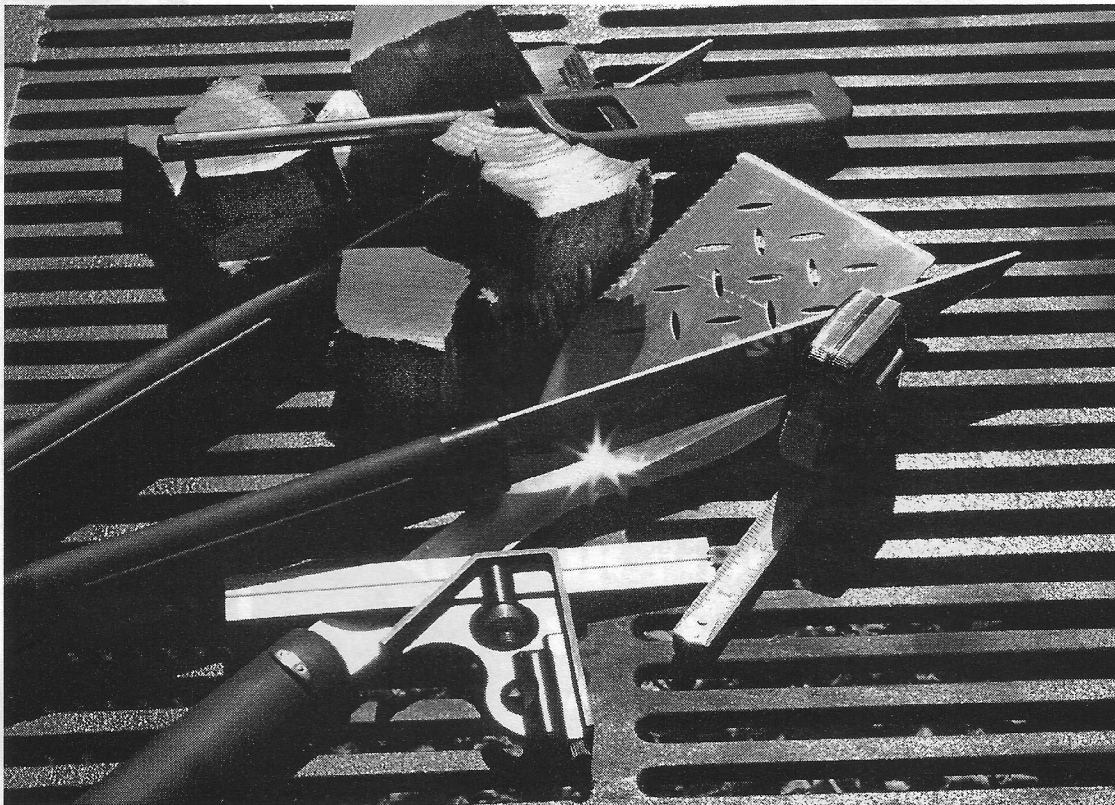


Photo by Bill White

Black & Decker to buy Delta, Porter-Cable

Black & Decker of Towson, MD has announced that it has signed an agreement with Pentair Inc. to buy it's Tools Group. The deal will be concluded for \$775 million later in '04. Tools Group include the brands Porter-Cable, Delta, DeVilbiss Air Power, Oldham Saw and FLEX among others. The Tools Group employs about 4,200 people worldwide. Black & Decker markets its own line of tools and equipment as well as the DeWalt brand.

Free shop layout web tool from Grizzly.

Free software that enables a user to customize a shop layout is available from the Grizzly Industrial's web site (www.grizzly.com). After shop dimensions are entered, the new Workshop Planner will display a blank blueprint of the shop's layout. Select from more than 400 icons and drag the tool image to the shop area. Once the icon is in place, it can easily be moved, rotated and resized. After the shop floor space has been designed the Workshop Planner will allow Save, Print and E-mail functions. This software is integral to the web site and most computer formats can access the program. Just look for the Workshop Planner icon on the www.grizzly.com home page.

Tool recall: Wagner cordless recharger base, March 2004.

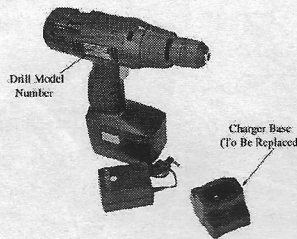
The U.S. Consumer Product Safety Commission announces the following recall in voluntary cooperation with Wagner Spray Tech Corporation.

Name of product: Wagner cordless drill charger base
Units: 180,000

Hazard: A defective battery can cause the charger base to overheat, causing the base to melt and possibly burn nearby objects.

Description: This recall includes 9.6-volt, 10.8-volt, 12-volt, 14.4- volt and 18-volt Wagner drill charger bases. The drills were sold in black and gray, and have the name "Wagner" printed on them. Model numbers involved in the recall are: W96DK, W108DK, W120DK, WB96, WB120, WB144, and WB180K. The model numbers are located on a label on the side of the drill.

Sold at: Department and hardware stores and through mail-order sales from January 1996 through December 2003 from between \$40 and \$100.



Manufactured in: China

Remedy: Stop using the charger base and contact Wagner Spray Tech for information on receiving a replacement charger base.

Consumer Contact: Call Wagner Spray Tech toll-free at (800) 214-0585 anytime or visit the firm's Web site at www.wagnerspraytech.com.

Woodworking Tip: Veneer Quick Dry.

If you moisten veneer with water and glycerin to flatten it, here's a great way to dry it. Simply place it between sheets of corrugated packing material. The corrugations permit air movement and the sheet and material will withstand a terrific amount of weight. A fan can be used to speed drying.

Tool Preview: Airshield

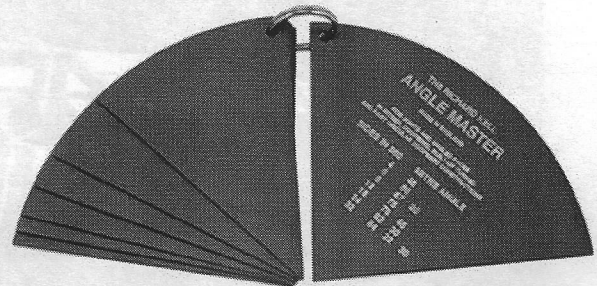
Controlling dust is an import task for a woodworker. And while new tools are so much better when it comes to collecting dust at the point of origin, you still need to protect your lungs from that bit which escapes. Trend's new Airshield not only protects you from flying objects (chunks of wood, bits of saw blades or broken router bits) with its polycarbonate flip-up visor, but its battery powered air filtration system protects your lungs as well.



It is lightweight and quiet and remarkably comfortable. The rechargeable battery is compact and lasts about four hours. For now, check out the Airshield (\$249) at www.airwareamerica.com.

New product: Angle Master

Never again worry about machine tool setup when preparing multisided pieces. These precisely made gauges give you the exact angle needed for seven of the most commonly used angles. Constructed of durable plastic for long life. Price: about \$28.00



PRECISION WOODWORKING TOOLS FOR ROUTER TABLES AND TABLE SAWS

JOINTECH[®]

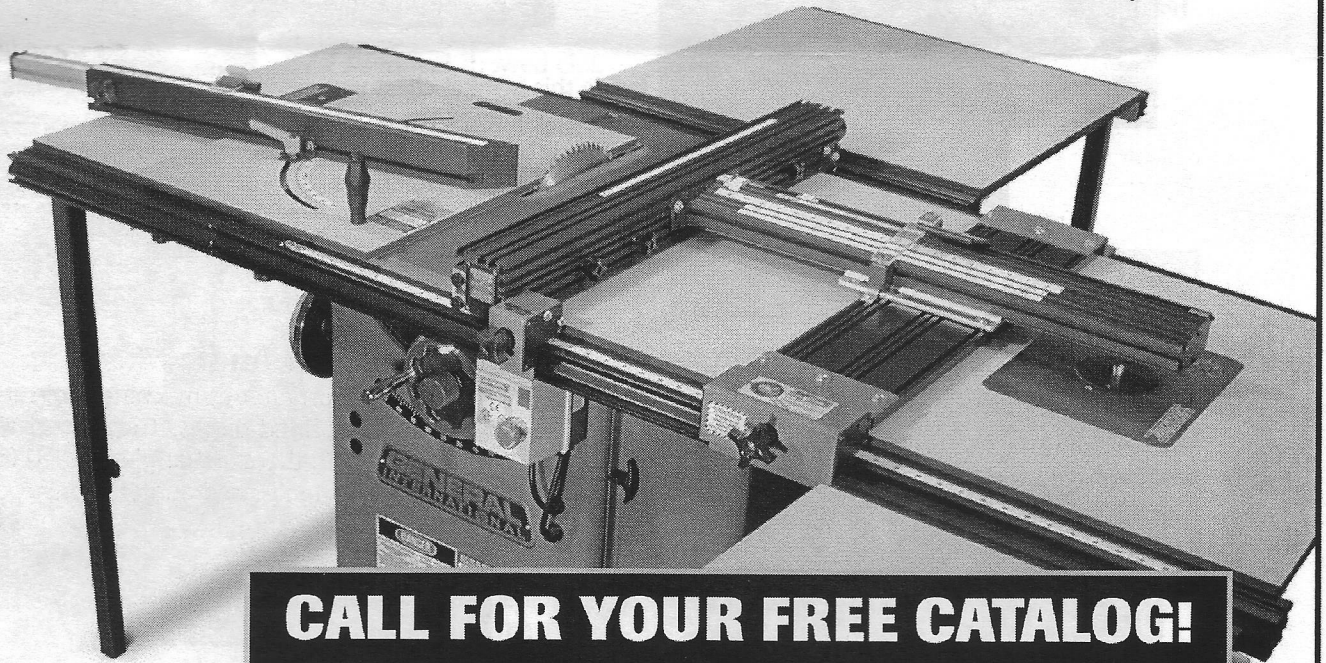
Ultra-Precision Woodworking Systems

- **Combination Router & Table Saw Fences**
Micro Adjustable, Accurate to 1/1000 of an inch
- **Router Tables, Table Saw Extension and Floating Infeed/Outfeed Tables**
Available in Solid Phenolic or Melamine
- **Complete Table Saw Upgrade Systems**
Available for virtually all Cabinet & Contractor Saws
- **True Zero Clearance Miter/Cutoff Sled**
Micro-Adjustable, Positive Detents Every 1/2 Degree
- **Table Mounted Router Lift System**
Raise & Lower a Router with 1/1000 of an inch precision
- **And Much More...**

Jointech Routing Center



**Award Winning Tools
from Jointech, Inc.**



CALL FOR YOUR FREE CATALOG!

1-800-619-1288

or visit us On-Line at: www.jointech.com

Starting winter of 2004, Jointech will open the doors to its first Woodworking Academy for all woodworkers. Classes will range from basic woodworking techniques to advanced cabinet making. Be sure and go on-line to see the latest information posted.

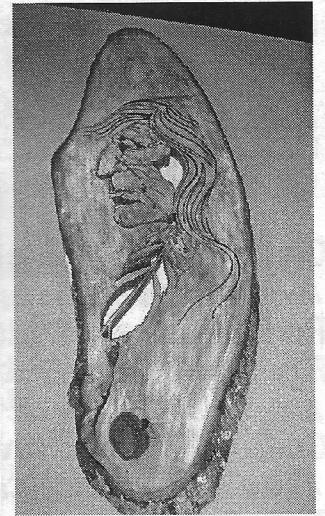
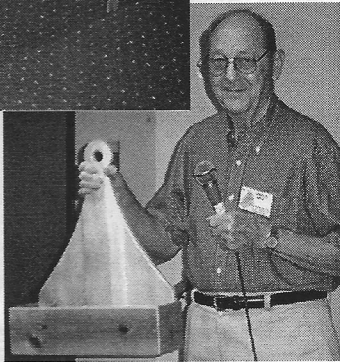
Authorized Dealer For:

**GENERAL
INTERNATIONAL**

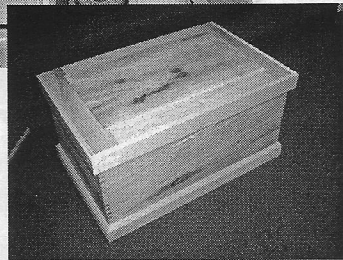
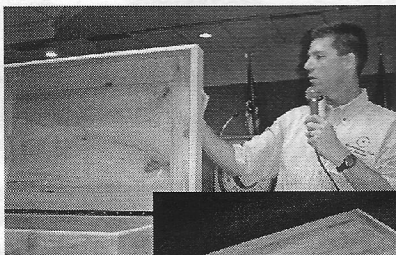
September projects



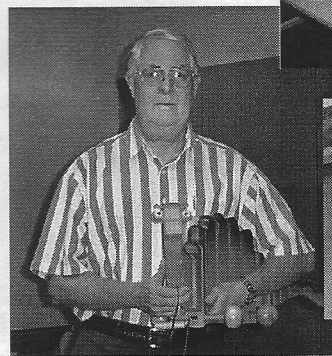
The knotty pine for this bench and colonial taper (candle) holder crafted by **Marcus Brun** came from paneling salvaged from a 1950's home.



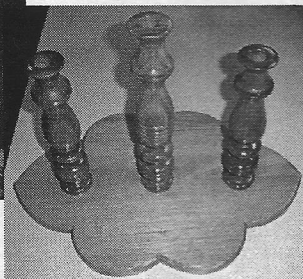
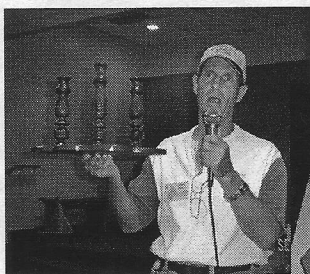
The Indian head was carved out of basswood by **Glenn Edwards** using 14 #2 scrollsaw blades. Glenn used cherry colored dye and discovered that the blotching caused by unevenness of the grain in the basswood added character to the piece.



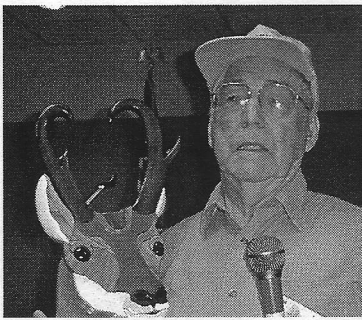
Inside this blanket chest you can actually smell the aroma of the cedar that lines the bottom of these two chests of cherry that **Todd Burch** crafted for a client.



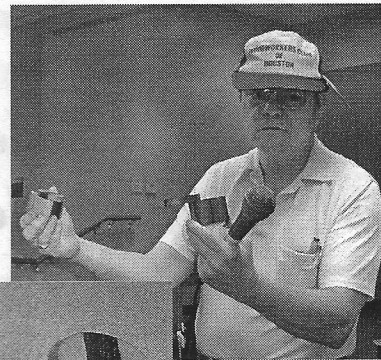
Hank Merry holds the green dinosaur that he crafted for his grandson. Hank explained that hinges hold the wiggly parts together because canvas doesn't hold up. The truck bank is made of oak and maple with a shellac finish.



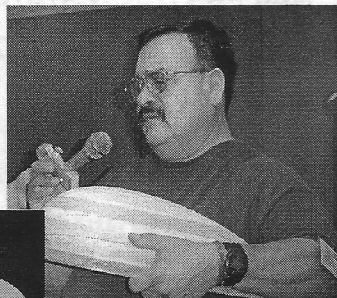
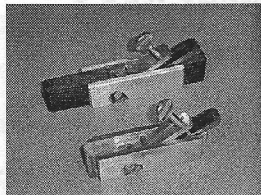
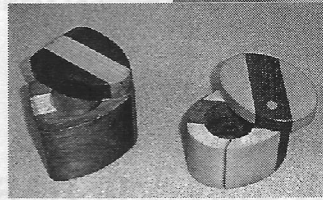
These candle sticks were assembled by **Dennis Serig**. Dennis credits **Lewis Vallette** for turning the sticks.



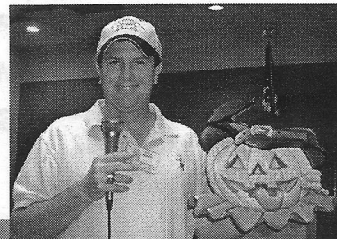
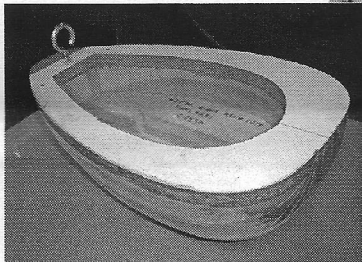
This deer intarsia was crafted by **Lee Knekow** of 33 pieces of aspen, white oak and poplar then finished with polyurethane.



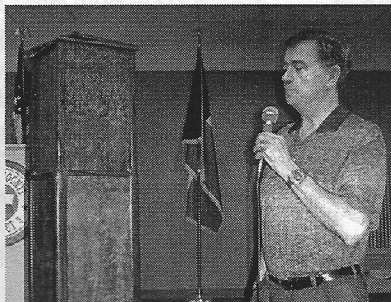
Robert Sandlin holds his handmade stamp holders—for roll stamps, of course.



Fred Sandoval showed club members his lute making form and the handmade planes used to shape the lute.

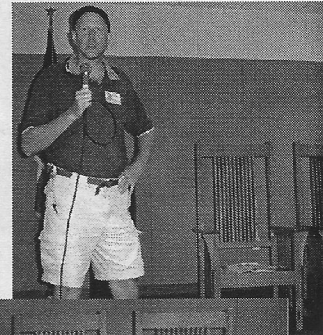


For **Steve Wavro** this pumpkin head, his first project, was a learning experience. It is made of walnut, cherry, osage, and western red cedar.



This sculpture stand was ingeniously crafted by **Art Thompson**. The edges are of coco bolo. The burl panels are from a 2000 year old California redwood that had naturally fallen and not been timbered. Being able to disassemble the stand allowed Art to finish the coco bolo edges separate from the panels themselves.

Rich Thomas talked about his Stickley style chairs of white oak. The walnut inserts graciously "cover up" an accidental dowel hole drill through. Rich will be adding leather cushions later.





Circle Saw Builder's Supply, Inc.
Circle Saw Shop of Houston, Inc.

2510 ELLA BLVD. • CORNER WEST 26TH ST. • HOUSTON, TEXAS 77008

CONTRACTORS AND BUILDERS TOOLS AND SUPPLIES

- MAJOR BRAND TOOLS
- PNEUMATIC NAILERS
- STATIONARY TOOLS
- CHAIN SAWS & SUPPLIES
- WOOD WORKING TOOLS
- PORTABLE TOOLS
- SHARPENING SERVICES

(713) 864-8444 • FAX (713) 864-6014 • www.circlesaw.com

**Specializing in quality hardwoods,
plywoods and moulding since 1990.**

Select your own wood from our supply of Birch, Mahogany, Maple, Padouk, Teak, Walnut and much more.

- Domestic and Imported Plywood
- Edgebanding and Veneer
- Butcher Block Tops
- MDF and Melamine
- Moulding

Houston Hardwoods has built a reputation for personal service, prompt delivery and on-site custom milling. Come by and meet our friendly staff or visit us on the web at www.houstonhardwoods.com

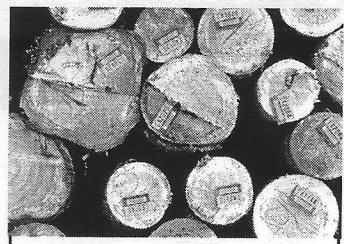


4910 West 34th St, Houston, TX 77092
 Tel: 713. 686. 6176 • Fax: 713. 686. 3217
 M-F: 7:30 - 5:00, Sat: 8:30 - 12:00



Club Contacts

- Jim Robertson, *President* 713-729-0820
- Walter Mason, *Vice-President* 281-313-4746
- Gary Rowen, *Secretary* 281-486-2013
- Al Morrow, *Treasurer* 713-863-7825
- Ken Kooser, *Director* 361-890-4090
- Paul Koury, *Director* 281-347-6309
- Tom Matkin, *Director* 281-492-6073
- Mike Kelly, *Director* 281-357-0127
- Gary Rowen, *Webmaster* 281-486-2013
- Joe Edelen, *Name Tags* 281-437-5977
- John Gay, *Book Library* 713-723-7509
- Blaine Stokes, *Video Library* 281-633-2909
- Loretta Buckley, Bill Hochmuth, *Coffee Committee*
- Bill White, *Communications Director and Newsletter Editor* 713-524-8768



Brandle's Sawmill

Rough Sawn Pine and Hardwoods

Custom Sawing

Logs up to 33" X 24'

13868 Lakeland Drive
Montgomery, TX
77356

936. 597.4575
(Call for Directions)

WWCH Monthly Meeting

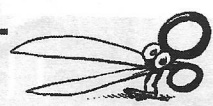
Second Saturday of every month
We open the doors at 8:30am, program starts at 9:00 and winds up by 11:30am.

Bayland Community Center
6400 Bissonnet
Houston, TX 77074

JOIN US!



Woodworkers Club of Houston Membership Application



A WWCH Membership is a chance to learn about woodworking, visit with other woodworkers and see some fabulous projects. Your membership includes a monthly newsletter, access to our video and book library, invitation to field trips and occasionally we collectively buy tools at discounted prices. Considering the cost it's a genuine bargain. So, cut out this application, include a check for \$24.00 yearly membership and mail it to the address below. And join us once a month for a good time.

Name _____

Address _____

City _____ State _____ ZIP _____

Phone () _____

Mail To:
WWCH Membership
502 Aurora
Houston, TX 77008

\$24⁰⁰ A bargain!

Woodworkers Club of Houston

11319 Atwell Drive
Houston, Texas 77035



MARK YOUR CALENDARS:



WWCH Monthly Meeting:
October 9

October Program: Ray Shelton
from Texas Kiln Products

WWCH Annual BarBeCue:
October 16; 11:00 am-3:00 pm

Next Monthly Meeting:
November 13

WOW! Over \$1500.00 in new tools to be awarded in raffles, auctions and prizes at the WWCH BBQ on Saturday Oct. 16.

Woodworkers Club of Houston • www.wwch.org • Meeting: Second Saturday of Every Month

The Cutting Edge offers only the finest woodworking tools and supplies.

Come visit and see our new and expanded store. We've kept all the best lines of supplies and equipment and added lumber and a few other surprises. We're still committed to providing the best sales and service in the Houston area. You won't be disappointed.

- Woodworking Machinery
- Turning Tools and Supplies
- Carving Tools
- English Hand Tools
- Japanese Hand Tools
- Lumber from around the world
- Monthly Woodworking Classes

JET
POWERMATIC
DELTA®

**Best Prices on JET
Machinery Every Day!
Authorized JET Service
Center**

See our web site for our
monthly list of classes and
much more:
www.cuttingedgetools.com



11760 S. Sam Houston Pkwy W.
713. 981. 9228

The
CUTTING EDGE, INC.
A Woodworker's Tool & Supply