

THE WOODWORKERS CLUB OF HOUSTON

VOLUME 18, NUMBER 10

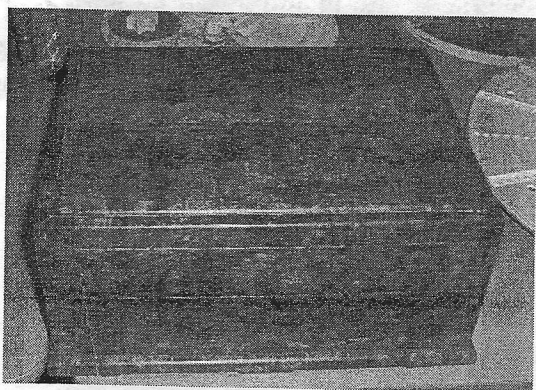
OCTOBER 2002

WWW.WWCH.ORG

PREZ SEZ

BY KEN KOOSER

What a wonderful experience I'm having. It looks like the hot weather is over and it is very pleasant in the shop. It was great to read Brent Browns piece in last month's newsletter. I encourage all members to write articles and submit them to Justin. That's the purpose of our official publication. I'm preparing for our outing at traders village on the 5th of October. We will have our good signs, a candy dish and a section of the belt sander track. I hope many of you will join me with some nice show and tell items. By passing out our flyers we may push our membership over the 200 mark. I feel the club is functioning very well Thanks to the STARS of the club. They are the ones who do the work. As I've said before our Club is great and can only get better. We (the club management) are always willing to listen to your ideas for improvement. The Woodworkers Club of Houston is a Social and Educational organization. We learn from the experts in the club. The exchange of ideas at Show and Tell and Problems and Solutions is where we learn. Our sawmill visit and our upcoming picnic are social events where we can get to know one another better. If you see someone without a smile, give them yours! Don't forget the club is selling (by silent auction) its issues of Fine Woodworking. This month we will sell all issues below # 100. Minimum bid is \$5.00 per issue. Next month we will sell later issues.



New members:

The following people joined our club in September. Please extend a warm welcome to:

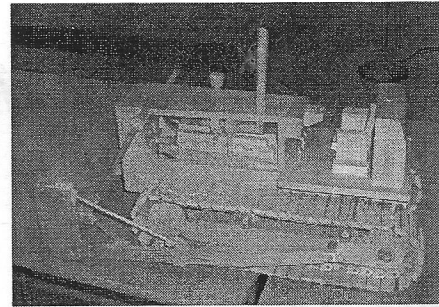
Esther Stokes

Brian Marr

Above: This gorgeous silver chest was made by Lon Kelley. The chest is made out of "Imbuia", known in most circles as Brazillian Walnut. By the way, Lon was the winner of the September meeting's Show & Tell Competition. The category was "Simply the Best".

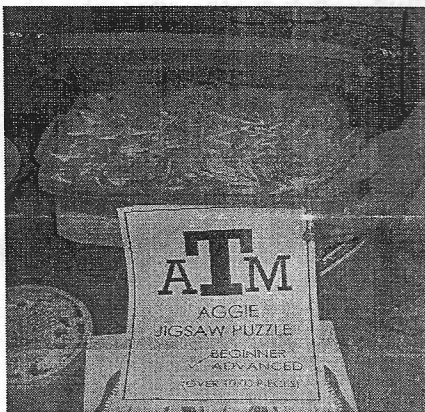
SEPTEMBER PROGRAM --

DENIS MURAS



Denis Muras gave a presentation on making wheels for toys at our September meeting. Not just wheels but...wheeeels, and more. Denis discussed his technique for making multiple wheels and wooden chains. For wheels he would cut them out with a hole saw then stack them all together on a rod and sand them on the lathe — uniformity guaranteed. Denis uses a drill press and an Incra jig to make multiple pieces for the maple chains. Denis also told members about techniques for stack-cutting, as well as many other useful tips for scroll-sawers.

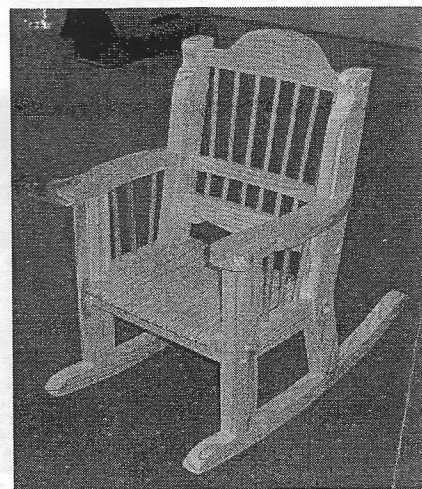
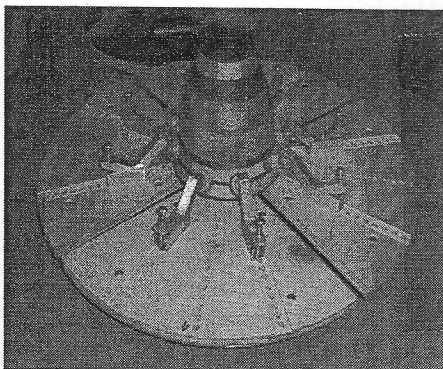
Great job, Denis!!



Left: Denis' original creation: a 10,000 Texas A & M puzzle. I didn't see any Aggies take a shot at putting it together. Any volunteers??????

Above: An absolutely fabulous replica of a bulldozer/front-end loader. The tracks on the loader actually work. This project is fantastic!!

Left: Lewis Valette told us about how he uses this jig to mount the turning blanks that he turns into bowls.



Above: This great rocking chair was constructed by Glen Edwards. Glen used mortise/tenon joints with biscuit joints.

AT YOUR SERVICE

President:

Ken Kooser - 936-890-4090

Vice-President:

Art Chester - 281-379-1783

Secretary/Treasurer:

Joan Loggins - 713-729-3776

Director:

Brian Honey - 713-529-8403

Director:

Jack Hutchison - 281-493-2633

Director:

Blake Present - 281-550-6865

Director:

Mike Turner - 281-346-1544

Book Librarian:

John Gay - 713-725-1529

Video Librarian:

Justin Kelly - 281-357-0127

Software & Literature Search:

Jack Hutchison - 281-493-2633

Saul Harris - 281-341-5373

Name Tags:

Joe Edelen - 281-437-5937

Coffee:

Loretta Buckley &

Bill Hochmuth

Web Master:

Gary Rowen - 281-486-2013

gcrowen@pdq.net

Newsletter Editor:

Justin Kelly - 281-357-0127

justinkelly@swbell.net

REMINDER!!

Dues are \$24 per year.

Dues are prorated for
new members ONLY.

Renewing members in
October: \$24.

New members in
October: \$6.



Upcoming Programs

This month, current member Paul Koury will be giving a program about scroll saw techniques. It looks to be a great program, so be sure to come.

In November, we will be having a toy program. At this meeting, members will be showing off toys their and telling us how they made them. Don't miss it!

BRANDLE'S SAWMILL

ROUGH SAWN
PINE AND
HARDWOODS

CUSTOM SAWING
AVAILABLE

LOGS UP TO 36"
DIA X 24'

13868
LAKELAND DRIVE
MONTGOMERY,
TEXAS 77356

936-597-4575



Left: Vincent D'Amico made this beautiful reliquary for his mother 30 years ago. He made it out of Honduras Mahogany. It is a replica of one that is in the Museum of Modern Art in New York City. Great job, Vincent!!

**WWCH MidYear
Financial Report
01/01/02 - 07/13/02**

INCOME

CAPS & SHIRTS	70.00
CLAMPS SOLD	650.00
MEMBERS DUES	3,078.00
LIBRARY	
TOOLS SOLD	890.00
VIDEO FINES	3.00
RAFFLES	814.00
TOTAL INCOME	5,505.00

EXPENSES

BANK FEES	75.31
CLAMPS ACCT	8.36
GIFTS & TROPHIES	366.68
LEGAL FEES	310.00 (1)
LIBRARY EXP	51.79
BOOKS	167.25
CD INDEX	79.00
FIXTURES	85.91
VIDEOS	17.00
MISC EXPENSES	242.81 (2)
DIRECTORIES	398.51
WEBSITE	151.20 (3)
MISC PRINTING & SUPPLIES	85.15
NEWSLETTER	
PAPER & LABELS	46.47
POSTAGE	391.00
PRINTING	678.94
RAFFLE ITEMS	420.96
GIFT CERTIFICATES	60.00 (4)
SAWMILL TRIP	
SOFT DRINKS	16.76
TOTAL EXPENSES	3,653.10
OVERALL TOTAL	1,851.90

Notes:

- (1) To review new By-Laws & Constitution
- (2) Booklets, show booth, misc postage
- (3) Check the new site - Bigger, no pop ups
- (4) Show & Tell Competition Awards

Want/For Sale

1. Sale of Fine Woodworking Magazines at October Meeting! All issues that the club owns below #100 will be sold by silent auction. Minimum bid per issue is \$5.00. For more information, contact Ken Kooser.

2. Following the October Meeting, there will be a tool sale. All kinds of tools will be sold (rumor has it that a table saw will be available to purchase). Tool sale will be held in the Whataburger parking lot at the corner of Hillcroft and Bissonnet immediately following the meeting. For more information, contact Buddy Grant.

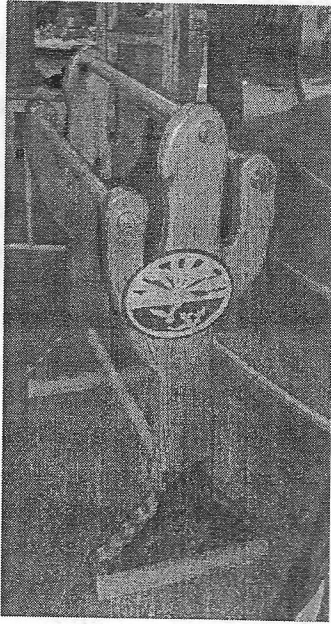
3. Tools for Sale. Northwest Houston area. For more information, contact Debbie Wotherspoon.

4. 9" disc by 6 x 48 belt sander. Made by Craftsman. Asking \$75. For more information, contact Gary Wallace.

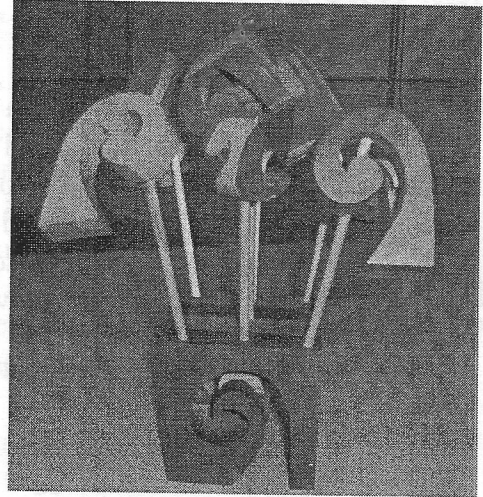
5. 10" Table Saw - excellent for craft-making. Asking \$175. For more information, contact Mike Turner.

NEWSLETTER DEADLINE!

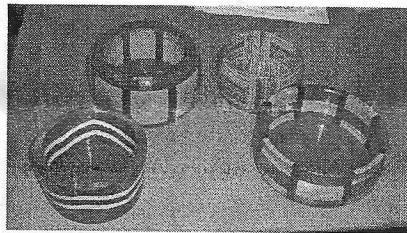
The deadline for the November issue will be Tuesday, October 29. If you have anything that you would like to submit to the newsletter, please do so by that day. If you have any questions, please call Justin Kelly.
Note: Submissions for the newsletter must be in computer format (no hard copies, please).



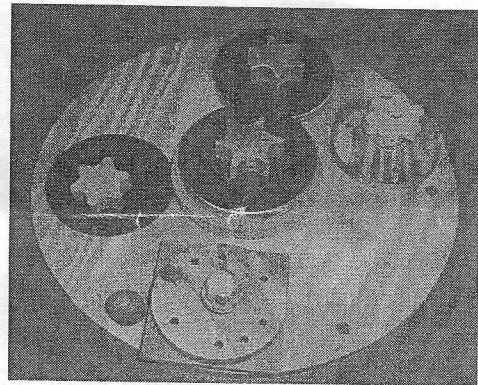
Left: This cedar quilt rack was made by Glen Edwards for his daughter. The patterns on the side were cut on his scroll saw.



Right: This puzzle was made by Ken Wallis by using some scrap wood that he had leftover from making some bowls (see middle left picture).



Left: Ken made all of these bowls several years ago, but he proved that the glue is still holding together.

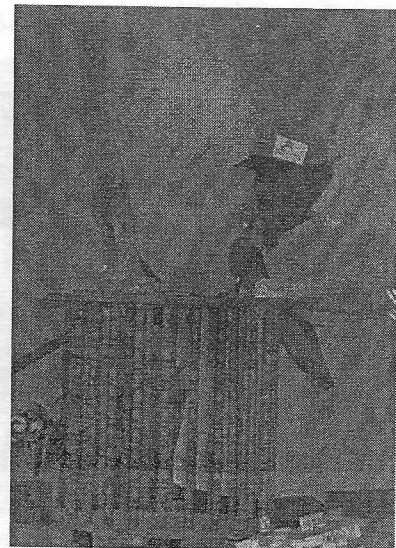


Right: This is one of several jigs that Ted Deen uses to make knobs.



Below Left: Ted shows off a tray that he made on his pin router.

Right: During Henry Glenn's "story time", we heard about his new laundry basket, made from some crib supports that he got from a child's crib (hopefully, the child wasn't still in the crib). He is also holding a piece of driftwood.... oops, I mean cactus wood.

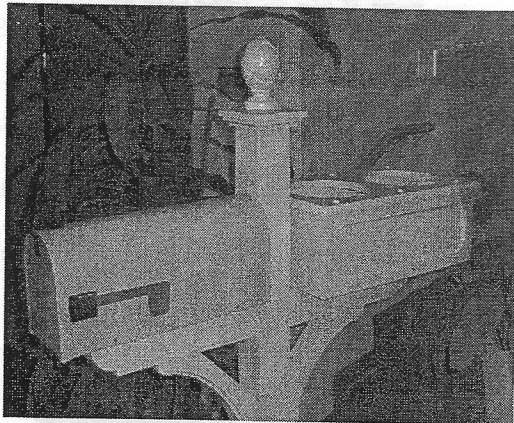
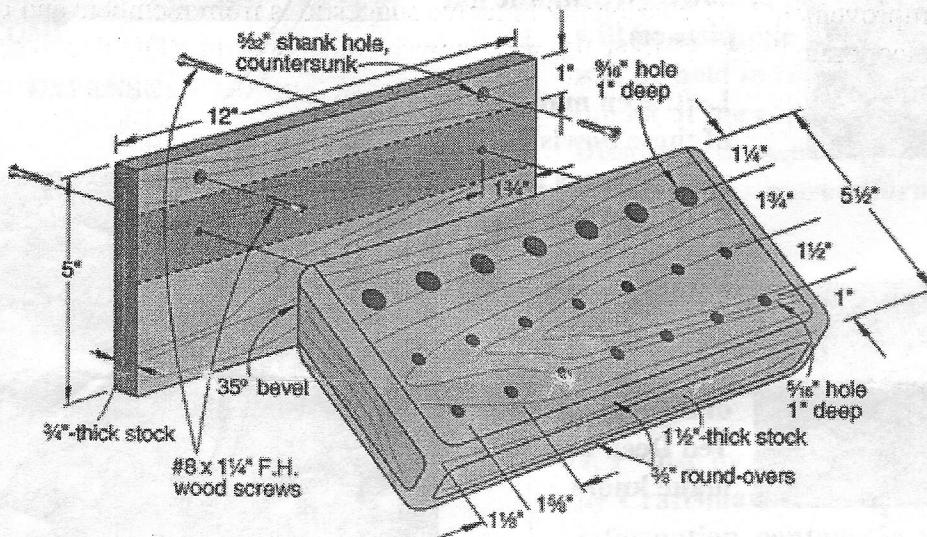


PROJECT OF THE MONTH --

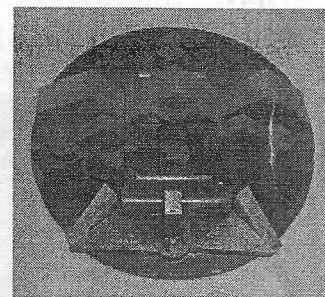
BIT SHELF

Here's an easy-to-build organizer you can customize to hold as many bits and shanked accessories as you need by simply varying its length and number of holes in this handy project. Angled for better accessibility and visibility of your accessories, our shelves hold router bits, sanding drums, flap sanders, and other drill-press and shanked accessories from our shop. Use either thick hardwood or 2X6 stock for the angled shelf and 3/4" stock for the backboard. We routed a 3/8" round-over on all but the back edges of the shelf where shown below, and finished each project with a clear finish.

Reprinted with permission
by Wood Magazine.
www.woodmagazine.com.



Left: This mailbox was made with treated wood by Joseph Rice. Notice the two flower pots in the rear of the post.



Above: Gary Rowen's granddaughter asked Grandpa to help her make something, and this is what they made out of Gary's scrap wood pile.

WEB SITE UPDATE

BY GARY ROWEN

I'd like to respond to some comments regarding the web site. First was "update the web site more often". Good input. I'd love to do just that. But the answer with which I wrestle is, WITH WHAT? What is not already in cyberspace somewhere that I can add to our website? My answer is inputs from members. What is your answer? So far Jack Hutchison and Ray Lancon are the only members who have submitted articles for publication on the web site. No member (in the last year or so) has submitted to me photos, articles, tidbits, tips, helpful hints, etc. outside of what has been brought to a meeting. I encourage every one of you to send me something you'd like see on our website.

Another comment was, "web site could use a little improvement". Another good input. However, please define "little improvement". Occassionally I receive suggestions from members and I've usually been able to incorporate them. Here again, what improvements would YOU like to see? Send me a note at cgrowen@pdq.net or wwch@hotmail.com, or if you wish to remain anonymous, post to our bulletin board. I can do most anything if it is not an unreasonable demand upon my time or my skills.

A third suggestion was to post the newsletter on the web site. That idea must have been communicated to me telepathically because I came up with that same idea at the August board meeting when it was suggested to provide free newsletters at various woodworking outlets in the city. The board had no objections to me scanning in the newsletter (sans phone numbers and advertisements) and posting on the website.

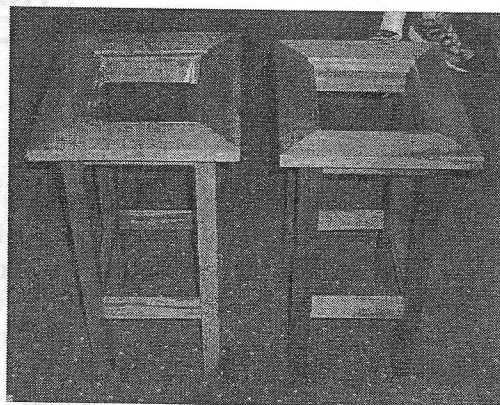
A fourth suggestion was to post the membership list on the web site to save mailing. This was done for a couple of years as a convenience to members, not to reduce mailing costs. This year the board elected not to post a membership list on the web site (even under password protection) because of threat from hackers, invasion of privacy and fears that passwords can be compromised.

Soooo..keep those cards and letters coming, folks.

COMPETITIVE SEGMENT THEMES!

In November, the theme is going to be "Toys". Bring them in to show off your toy-making skills. If desired, arrangements can be made for tax-deductable donations to Texas Childrens Hospital.

Below: These two table, made by Ken Kooser, is composed of mahogany legs and cherry tops.



**WOODWORKERS CLUB OF HOUSTON
30630 QUINN ROAD
TOMBALL, TEXAS 77375**



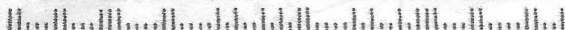
CALENDAR OF EVENTS FOR OCTOBER:

10/5/02 - WWCH table at Traders' Village

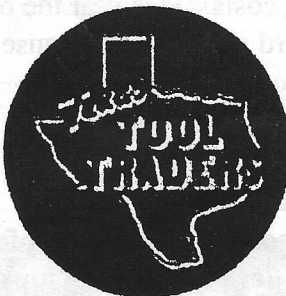
10/12/02 - Meeting at the Bayland
Community Center - 9:00 A.M.

10/17/02 - Annual WWCH Bar-B-Q
at the Bayland Pavillion

77062+2622 15



THREE HOUSTON LOCATIONS:

 <p>440 HWY. 6 SOUTH HOUSTON 281-496-0811</p>	<p>5900 N. FRWY. HOUSTON 713-697-9909</p>	<p>120 GULF FRWY. LEAGUE CITY 281-332-9201</p>
------------------------------------------------------------------------------------------------------------------------------------------	---------------------------------------------------	--------------------------------------------------------

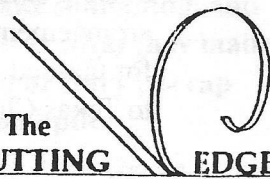
**DEWALT ~ PORTER CABLE ~ DELTA
JET ~ MILWAUKEE ~ MAKITA
HITACHI ~ BOSCH ~ BESSEY ~ RYOBI
"PROUD SUPPORTER OF THE WWCH"**

Featuring the Finest Tools The World Has To Offer

English Hand Tools By Record, Stanley, Henry Taylor, & Robt. Sorby.
Japanese Saws, Chisels & Stones By Gyokucho, Matsumura, and King.
Biesemeyer, Makita, Bosch, Starrett, Irwin, Olson, Jorgensen,
Magna-Set, Freeborn, Lie-Nielsen, & Incra: All Made In The USA.
Canadian Chucks and Hand Tools By OneWay & Veritas.
European Tools by Freud, Tormek, Sjöberg, Stern, & Footprint.

PLUS: The Best Prices On JET Machinery Every Day!

We are an Authorized JET Service Center.
7123 South West Fwy, Just North of Bellaire Blvd. (713) 981-9228



The CUTTING EDGE, Inc.
A Woodworker's Tool & Supply

Mon. - Fri. 9 am to 6 pm
Sat. 10 am to 5 pm