

Woodworkers Club

OF HOUSTON

VOL. 6, NO. 10

OCTOBER, 1990

Officers

Don Richardson - President 661-1365
Ted King - Vice President 351-6808
Claude Emory - Sec./Treasurer 861-3495
Sharon Buckley - Newsletter Editor 944-6739

Board of Directors

Bill Baker - 667-8381
Bob Gallant - 376-0276
Bill Hochmuth - 774-1733
Bill Sallans - 465-0291

SEPTEMBER MEETING

The program was presented by Stuart Murphy on Renaissance Musical Instruments. Stuart labels himself as an Amateur musical instrument maker, but his knowledge of the history of musical instruments and his skill in reproducing these instruments puts him on a much higher level than amateur.

Stuart had a variety of instruments that he has made--from flutes to lutes. The lute is the fore runner to the guitar, but you won't find any amplifiers attached to these instruments.

There are basic mathematic ratios for the string length (bridge to nut) for musical tones.

To achieve the best tones--the sides and bottom of a string instrument are made from hardwoods, the top--sound board--is made out of evergreen woods, such as spruce, redwood, cedar or cypress.

Instead of a jointer Stuart uses a shooting board with a 36" Hand plane.

For accuracy and speed Stuart uses a Router Recreator to make some of the parts. He purchases the finished part from musical parts suppliers and uses it as a pattern.

Stuart uses violin makers planes (thumb planes that you draw toward you for more control). These small brass planes are available from A M T American Machine Tool.

Some of the parts that are required --as the carved violin neck and tuning pegs, Stuart buys from suppliers that specialize in these items. He purchases used bows and reworks them.

Wind instruments have a conical bore--large hole at the top and a smaller hole at the end, if the bore was straight, the finger holes that make the different notes would have to be 3" apart, (which would make for a very long instrument).

Stuart uses a bending iron that he made from a 75 watt soldering iron, placed inside a copper pipe, to control the amount of heat he has it wired to a time delay thermostat.

To bend the wood you lay it across the heated pipe, be sure the wood is dry.

The heated piece is then clamped to a mold. Each piece is attached to the mold in a predetermined sequence.

Instrument makers use hide glue, because instruments are always in need of repair and hide glue is reversible.

For support, all interior joints are lined with linen, linen is easier to remove than wood and will stop a crack from running till it can be repaired.

Factories use veneer strips instead of linen because machines can install the veneer but linen must be applied by a real person.

Instruments found in Africa, 5,000 to 6,000 years old used a similar method of sap from trees and boiled bugs.

One of the best wood historically for sound quality is Osage Orange.

Germany and Italy have used controlled cutting methods of woods for musical instruments for hundreds of years.

HOW TO FIND OUT ABOUT MUSICAL INSTRUMENTS ?

1. Catalogs-- every kind of instrument kits can be purchased.

2. Books

3. American Guild of Luthierie ---Luthierie tools--all types of jigs and tools.

4. Rice Library--Renaissance books.

5. Encyclopedia on Musical Instruments.

6. Record albums--many have information inside.

7. Plans are available for \$3.00, \$4.00 or \$5.00 each.

8. Paper Templates.

9. Stuart found a information insert in a C. D. enlarged the photo on a copy machine and has a pattern for an instrument.

There are many ideas as to why old world violins had their sound quality. One of the leading ideas is that the logs were seasoned in salt water lagoons.

Violin finishes are strictly surface not penetrating finishes as not to invade the acoustic sound.

Stuart brought along Larry Baringer--a Mountain Dulcimer maker and musician.

The Mountain Dulcimer is originally from the Appalachian mountain area.

For more information refer to the book Foxfire 3.

Dulcimer kits are available from \$65.00 on up.

The dulcimer is easy to play--Larry said he learned 3 songs the first night.

Larry's dulcimers are Walnut except for the Western Red Cedar top. He does not recommend Rosewood pegs as they are nice to look at-- but hard to tune.

Larry entertained us with some songs, that he played on the dulcimer he made.

How long for a Luthier to change a light bulb--not long --you just have to wait for him to make the jig.

Thanks Stuart Murphy and Larry Baringer for a very interesting and entertaining program, it was enjoyed by all.

CHARITY SHOW

The charity show is only a couple of weeks away--so everybody get those projects finished now.

Now is the time to bring your projects to the October meeting if you can not get them to the show on Friday morning.

We still can use more volunteers to man the sales booth, both Friday and Saturday. Even if you haven't signed up you can still show up Friday or Saturday or come for both days.

Chuck Maxwell and Bill Beggs can always use woodworkers to help with the demonstration side of the booth. If you think you can't sell but would like to cut some wood, see Chuck Maxwell.

We also need sacks, I'm sure we all have a pile of bags we hate to throw away so lets recycle them and bring them to the meeting or to the sale.

SEE YOU ALL AT THE SHOW !!!!!!!!!!!!!!!!!!!!!!!!!!!!!!!!!!!!!

GROUP PURCHASES

We have a Group Purchase Chairman--Greg Mills. So make your list as to what you would like to purchase as a group. In the past we have made real good deals on Aluminum Clamps, Branding Irons and woodworking vises.

NOMINATIONS OF OFFICERS

This meeting we will hold nomination of officers and vote on the officers for 1991 at the November meeting.

SAFETY

By Murray Gordon

Leaving things on top of power tools is very dangerous habit. The tool can be hurled at you, injuring you or ruining the tool.

Keep the tops clean--if you do place tools on your table saw keep them on the opposite side of the fence from the blade.

Steve recommends using some type of tool belt or apron to kept your pencils, tape measure and square, handy and the work area neat.

Another member always cranks the blade on his table saw down below the table for safety.

One of the best safety tip is good working habits-- its just as easy to use good habits as bad habits and a lot safer.

ANNUAL DECEMBER DINNER WITH OUR GRAND SHOW AND TELL.

The Dinner this year will be held Friday December 7th, 1990 at the Rice Faculty Club beginning at 7:00 with a pay bar--Dinner at 8:00, introduction of officers and ending with the Grand Show and Tell.

This year the Dinner will cost \$15.00 per person for members and their spouse \$30.00 per couple. For any non members the Cost per person will be \$20.00.

The deadline for reservations is November 12th, 1990. Enclosed in this newsletter is a reservation form.

The Officers have ordered some very nice ribbons to be awarded for the Show and Tell Awards. In the past we have had just plain red and blue single ribbons. This year they will still be red or blue but with a very ornate round top and two ribbons. Everyone will want one of these ribbons to hang in their shop. So you better start making some sawdust now.

PROBLEMS AND SOLUTIONS

Murray Gordon is looking for the 2" metal wheels used in the Blizzard book of toys. One suggestion was the Cherry Wood catalog.

What can you do if the bits loosed in the router. The first solution was to clean the bits and collet very carefully with acetone and if that doesn't work its best to replace the collets as they can wear out.

BUY AND SELL

Ken Wallis can still get the bowling alley maple. If you would like to purchase let him now about a week before the meeting, you can also contact Henry Reed and he will let Ken know. Ken can also get Yellow Pine in about the same sizes as the maple, the cost runs about half price.

SHOP TIP----HARDWARE

By Don Sloan

For quite some time I have been sending off to purchase box hardware. No one store had every thing I needed. Recently I was trying to purchase some #16--5/8" B. P. Inoleum nails, and some 1" x 3/4" brass hinges. I found both at the Southland Hardware Store. It is located two (2) blocks east of Shepherd on Westheimer.

Chuck Maxwell needed some #4 x 3/8" round head brass screws. They had them on hand 100/ box for \$1.95.

By the way they have a lot of clerks who know the stock--ask them for help. This store has everything in the hardware line.

I have to agree with Don. Southland is where I go when I can't find those hard to find items that the large Home improvement centers don't carry. This store is like the old time hardware stores that I grew up with. The problem with Home Improvement Centers is they sell only those items that sell in large quantities. So when I needed to replace those Metric Aluminum Screws that were bound in my Hitachi router base with Brass Metric Screws, I headed to Southland--no problem a standard stock item. I hate to admit it but I have been shopping there for over 20 years.

SHOW AND TELL

Don Richardson used some of the techniques that he learned from Don Sloan's program and made a small box with Walnut top and lined in felt.

Steve Procter had photos of a Cherry China Cabinet seven and one half feet tall to fit 8'-0" ceilings. He made it with a removable pediment for access to the wiring and to allow the cabinet through doors. Made of solid Cherry with glass doors. Finished in tung oil.

Robert Sandlin had some pot holders that he made for the Charity Show.

Don Sloan had a glass door display cabinet made of Oak, some oak baskets for the charity show. Don also made a puzzle map of the United States from plans out of the Woods Weekend Woodworking Magazine.

SHOP TIP Rubber cement is very good for adhering paper to wood, and its also easy to remove.

3M 77 Adhesive is good but gums up on the blade.

Fabric spray adhesive available from cloth stores is also recommended.

IDEAS AND PLANS WANTED

Today's Woodworker a fairly new woodworking magazine has contacted us asking if any member would be interested in submitting an article or ideas for there JAN/FEB. ISSUE. They would need the article by the end of October. If your interested contact either Nancy Eggert or Chris Inman area code 612 428-4101 Ext. 232. Last month they contacted Chuck Maxwell on submitting some of his jigs.

Their mailing address is Today's Woodworker Rogers, Minnesota 55374-0044.

ANNUAL DINNER MEETING

REGISTRATION

WOODWORKERS CLUB OF HOUSTON

DECEMBER 7TH DINNER MEETING

RICE UNIVERSITY FACULTY CLUB

7:00 P.M.--FELLOWSHIP

8:00 P.M.--DINNER

COST: \$15.00 PER PERSON MEMBERS AND MEMBERS SPOUSE

COST: \$20.00 PER PERSON NON-MEMBERS

MEMBER NAME _____

SPOUSE NAME _____

NON-MEMBER GUEST _____

Please enclose a check with your reservations. Make check payable to WOODWORKERS CLUB OF HOUSTON. Send check to Claude Emory 840 Le Green Houston, Texas 77008 861-3495.

DEADLINE--DEADLINE--DEADLINE--DEADLINE--DEADLINE--DEADLINE

November 12, 1990-----November 12, 1990

DUST COLLECTION SYSTEMS--CON'T

Last month we discussed the difference between PVC and metal piping. PVC can be purchased at Plumbing supply houses or any Home Improvement centers, you can also purchase sheet metal piping at a Home improvement center but their stock is usually limited. The best place is a sheet metal fabricator, check your yellow pages for one near you. The one we went to, had everything in stock and what they didn't have they made up for us as we waited. Be careful because these places usually will not accept returns, so plan carefully. The 4" Diameter pipe came already assembled in 10 ft. lengths, the 5", 6" and 8" were in 4'-0" lengths and we had to snap the seams together to make up the pipe, this was no problem and made them very easy to transport. With the PVC you can cut it with a hacksaw or a hand jigsaw. The metal piping can be cut with sheet metal shears, a hacksaw (I would not recommend). I was lucky that I had experienced volunteers that helped me install the metal piping. We used a shear designed to cut the piping and crimpers to crimp the cut end. I noticed that woodworkers supply of New Mexico sell both these items for about \$25.00 each. I'm sure they are available locally and maybe cheaper. But you don't need special crimpers, Don showed us how he uses a pair of needle nose pliers to crimp the ends, I have tried it and it works very well.

Advantages to using metal piping --- its easy to work with, lightweight, thin walled but strong, and you don't have problems with static buildup.

If you need a special connector for one of your machines you can have it fabricated. Of course if you use PVC you can fabricate your own connector out of wood.

You need to be able to shut off machines that you are not using. There are a variety of ways to accomplish this. First you can purchase ready made Blast Gates, made out of Non-spark Aluminum or PVC. You can also make your own blast gates or just use wooden plugs.

Next month we'll discuss making your own blast gates and plugs. We'll also have a chart on the CFM requirements for most woodworking machines and a plan on how to design your system.

OCTOBER MEETING

WHEN: OCTOBER 13TH, 1990 9:00 A. M.

WHERE: BAYLAND COMMUNITY CENTER
ON BISSONNET AT HILLCROFT

PROGRAM: Dr. Bill Forkner will present a program on Design. One of the most crucial elements of woodworking is design. You can have the best skills and techniques but if your design is bad, your project will suffer. Dr. Forkner is head of the University of Houston Industrial Arts Department and always gives us an excellent program.

DON'T FORGET TO BRING YOUR CHARITY SHOW PROJECTS TO THE MEETING OR TO T GREENSPPOINT MALL.

Pasadena Industrial Supply



Skil 12volt Top Gun Battery Drill

Power Tool & Accessory
Headquarters for;
Delta Machinery, Porter-Cable
Milwaukee, Hitachi, Bosch,
Makita, Skil. Safety-Speedcut
& More!

\$129

Skil# 2735-04

- 12volt system gives longer run time & higher torque
- Extra Battery pack, charger & case included
- Adjustable slip clutch reduces stripping of small fasteners
- Variable speed over 2 gear shifted ranges

Extra Battery Pack Included!

222 West Pasadena Freeway, Pasadena Texas 77536 472-5588

Hardwood Lumber Co. Lawndale Division Imported and Domestic

Quality
Hardwoods - Softwoods - Plywoods
Mouldings & Squares

A COMPLETE SELECTION OF FINISHING SUPPLIES.

Marine Plywood
Parana Pine
Teak

Honduran Mahogany
Exotic Hardwoods
Domestic Hardwoods
WALNUT - BIRCH - ASH - CHERRY
CYPRESS - RED AND WHITE OAK
AND OTHERS

MON. - FRI. 7:30 TO 4:30

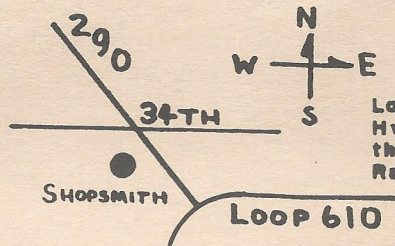
SAT. 8:00 TO 1:00

5401 Lawndale
(713) 921-6131

Exp. 12/90

Your Complete Woodworking Center Check Out Our Hardwoods, Our Prices Are Low

Hours:
Monday to Friday:
10:00 a.m. to 8:00 p.m.
Saturday
9:00 a.m. to 5:00 p.m.



Shopsmith Inc.

Located at 34th St. &
Hwy. 290 to Austin on
the West side in the
Randalls Strip Center.

Northway Shopping Center
10965A Northwest Frwy.
Houston, TX 77092
Phone: (713) 681-5200

Exp. 1/91



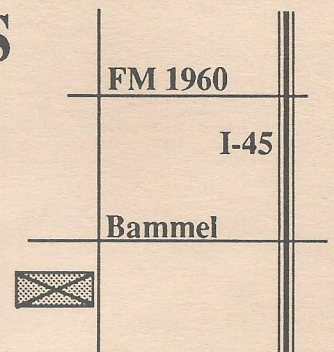
AUSTIN HARDWOODS

13001 VETERANS MEMORIAL DR.
HOUSTON, TEXAS 77014

440-0764

We stock over 80 species of lumber including rare exotics and turning stock. Plywood, Veneer, Moulding, Flooring, Tools, Millwork, Paneling Etc. also available

Exp. 8/89

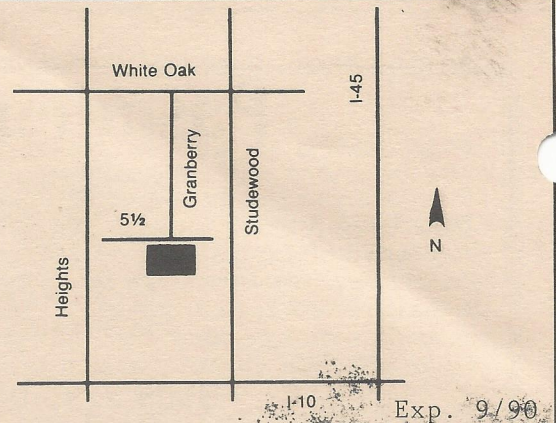


HARDWOOD LUMBER CO.

700 E. 51/2 St. (In The Heights)
Houston, Texas 77007
(713) 862-6628
Hours: M-F 7:30-5:00, Sat. 8:30-1:30

We stock over 65 species of lumber including
hard to find exotics!

Also: Plywood, Veneer, Moulding, Formica,
Custom Milling, Woodworking Tools, Books, etc.



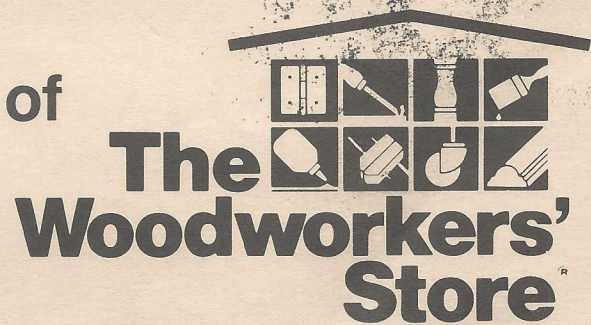
Send Today for the Most Complete Catalog Selection of Woodworking Supplies

Please Enclose \$1.00 (3rd class) or \$2.00 (1st class)

Name _____
Address _____
City _____ State _____ Zip _____

Orders Shipped Within 48 Hours

Exp. 1/91



21801 Industrial Blvd., Rogers, MN 55374

PRINTED BY SPEEDY PRINTING SERVICE OF TEXAS 3727 W. ALABAMA, HOUSTON, TX. 77027 (713) 877-8466



5117 April Lane, Houston, Texas 77092

Hours: M-F 7:30-5:00 SAT 8:30-12:30

(713) 686-6176 Phone

(713) 686-3217 Fax

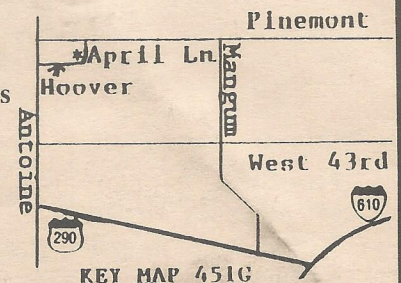
DOMESTIC & IMPORTED HARDWOODS

Ash, Basswood, Birch, Cherry, Mahogany, Maple, Red Oak, White Oak,
Poplar, Walnut Etc.

High Quality Domestic & Imported
Plywoods, Softwoods, Hardwood Veneer
Edgbanding & Hardwood Pliable Veneers
Excellent Service & Competitive Prices!

ON SITE CUSTOM MILLING
TO YOUR SPECIFICATIONS,
S2S, S2SIE, S4S
(No order too large or small)

Expires 8/91



Woodworkers Club of Houston
P.O. Box 34481
Houston, Tx 77234

