

Woodworkers Club of Houston

November, 2005

Volume 21, #11

www.wvch.org



Too much fun! The 2005 WWCH Picnic a blast again this year.

by Dottie Forbes, Picnic Chairman

Perfect weather, great food and terrific people made our 2005 Annual Woodworking Club Picnic a big success. Many people contributed their time and energy to this year's picnic, but I would especially like to thank **Ken and Vickie Kooser, Jim Robertson, Eddie Arnold, Jamie Powers, Alan Bachrack, Bill White, John Jackson and Andy Anderson** for their generous assistance in making this a particularly pleasant event.

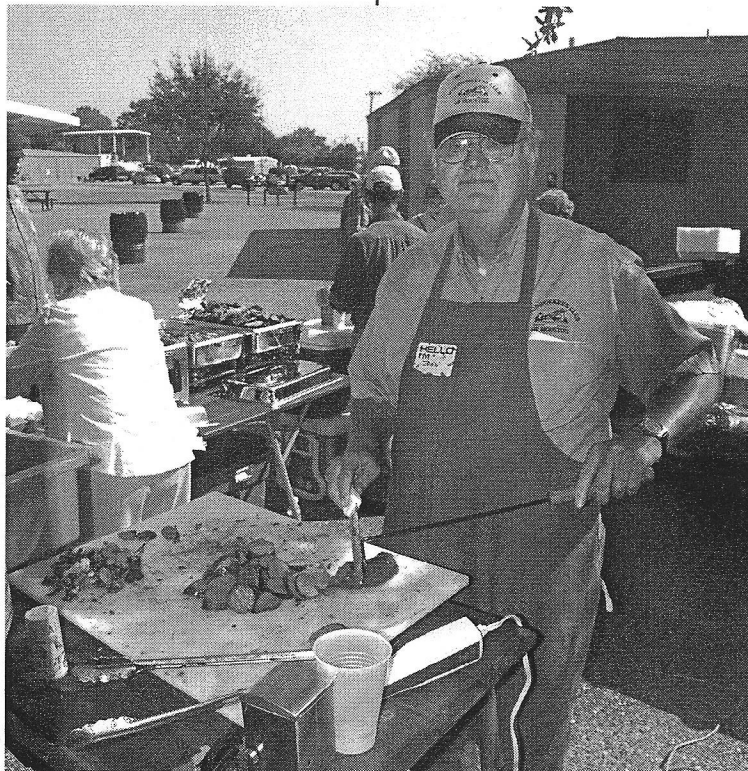
In addition to our hard working club members, I want to recognize and thank the many outstanding companies that honored our request for support. Their generous and thoughtful contributions made this year's auction and raffle one for the record books!

Our members are encouraged to peruse the list of contributing companies below, and to patronize them whenever possible. These are the companies that are listening to us, that value us, that want our feedback about their products, that are

helping our club grow and keeping our annual dues reasonable.


Our valued benefactors include:

Adjustable Clamp Company
August Home Publishing (Woodsmith, Shopnotes, Workbench)
Behr Process Corporation
Circle Saw
Clark Hardwood Company
Craft Supplies USA



John Jackson slices some of **Jamie Power's** delicious BBQ sausage.

Cutting Edge
Elmer's Products
F & W Publications
(Popular Woodworking)
Freud TMM, Inc.
Garrett Wade
Highland Hardware
Houston Hardwoods
Hut Products
Jesada Tools
Jointech
Klockit
Kreg Tool Company
Lee Valley Tool Company
Lie Nielsen
Makita Tools
Meredith Corporation
Milwaukee Electric
cont. page 2...

The Club will promote woodworking by providing a forum for the exchange of ideas, to help members improve their woodworking skills and techniques and to promote safer woodworking habits and conditions. 

Min Wax
Readers Digest
Ridge Carbide Tool Company
Rockler, Inc.
Ryobi
Scroller Ltd.
The Taunton Press (Fine Woodworking)
Woodcraft
Woodline Tool Company
Woodhaven
Zinsser Company

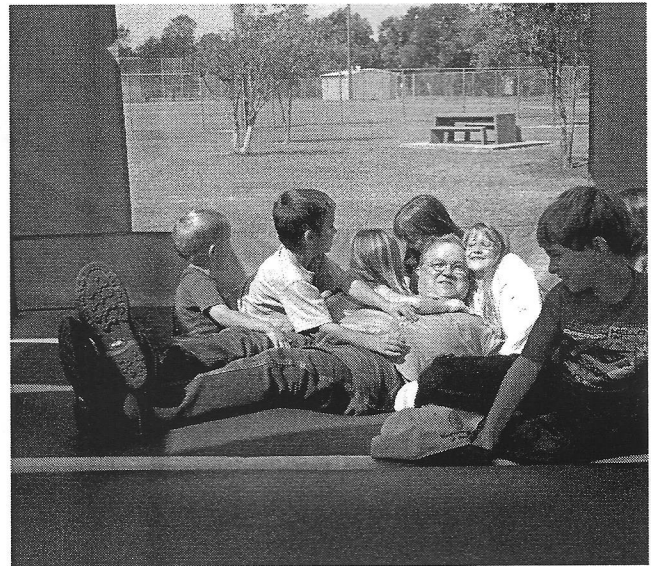
The members of the Woodworkers Club of Houston have a lot to look forward to in the future. Events like this year's picnic help bring us together, as well as, help our club financially and enable us to make a contribution to our community. If you missed out this year, then I strongly recommend you not miss the next one, cause it's going to be even better.



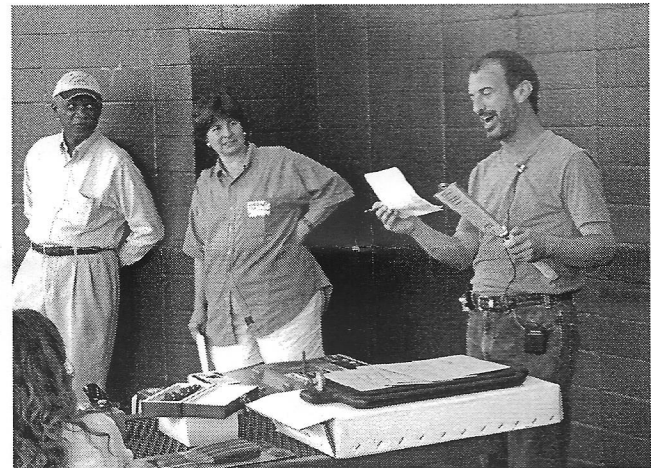
The serving line was a favorite destination for members.



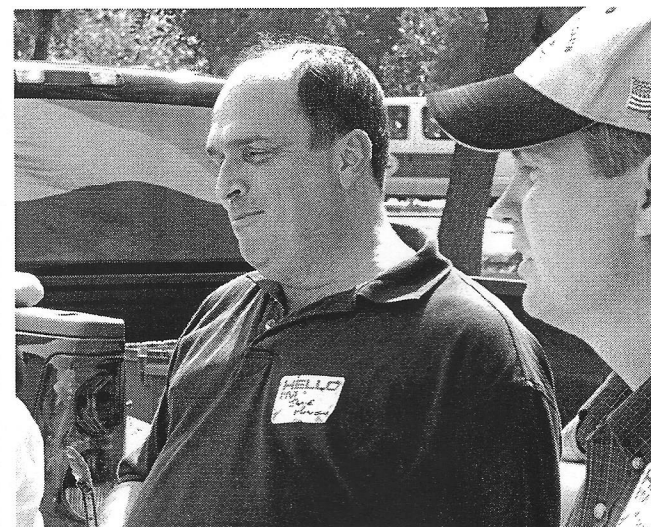
One of the few times when things got a little quiet at the picnic.



Jim Robertson keeps a watchful eye on the children while in the Moonwalk.



The auction is in progress as Dottie Forbes, Picnic Chairman looks on.



Jamie Powers shares a recipe for BBQ with fellow members.



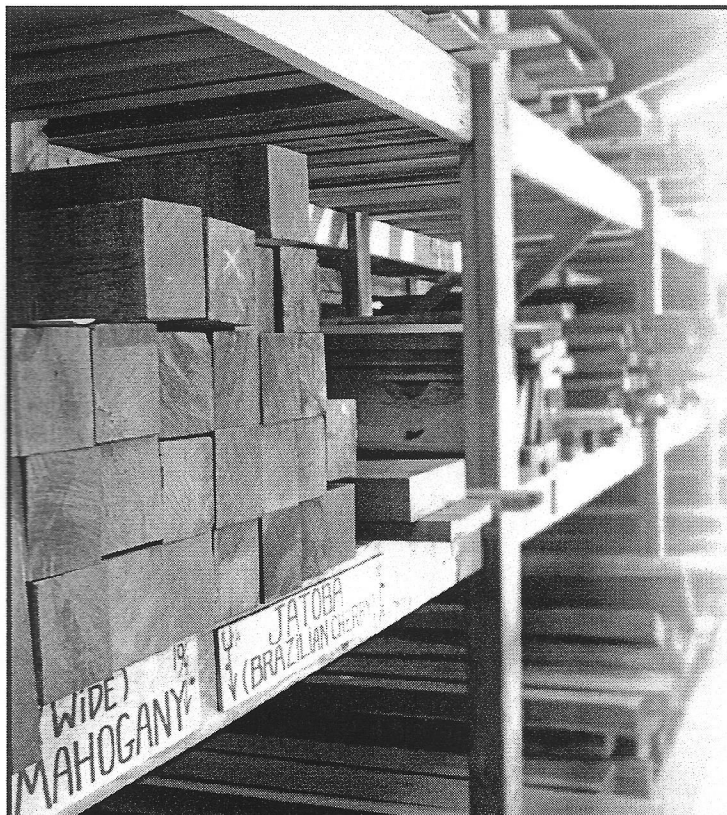
Circle Saw Builder's Supply, Inc.
Circle Saw Shop of Houston, Inc.

2510 ELLA BLVD. • CORNER WEST 26TH ST. • HOUSTON, TEXAS 77008

CONTRACTORS AND BUILDERS TOOLS AND SUPPLIES

- MAJOR BRAND TOOLS
- PNEUMATIC NAILERS
- STATIONARY TOOLS
- CHAIN SAWS & SUPPLIES
- WOOD WORKING TOOLS
- PORTABLE TOOLS
- SHARPENING SERVICES

(713) 864-8444 • FAX (713) 864-6014 • www.circlesaw.com



**Specializing in quality hardwoods,
plywoods and moulding since 1990.**

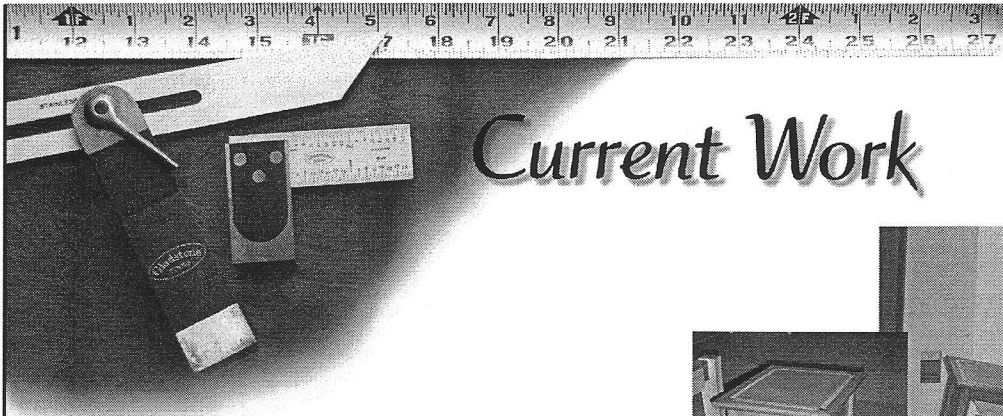
Select your own wood from our supply of Birch, Mahogany, Maple, Padouk, Teak, Walnut and much more.

- Domestic and Imported Plywood
- Edgebanding and Veneer
- Butcher Block Tops
- MDF and Melamine
- Moulding

Houston Hardwoods has built a reputation for personal service, prompt delivery and on-site custom milling. Come by and meet our friendly staff or visit us on the web at www.houstonhardwoods.com

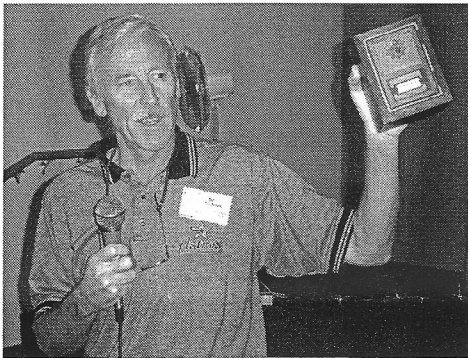
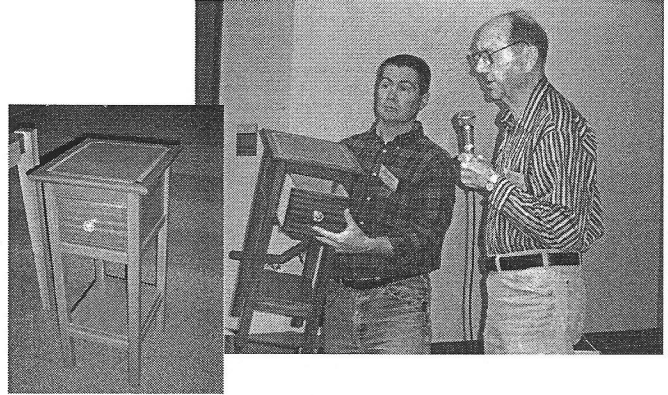


4910 West 34th St, Houston, TX 77092
Tel: 713. 686. 6176 • Fax: 713. 686. 3217
M-F: 7:30 - 5:00, Sat: 8:30 - 12:00



Current Work

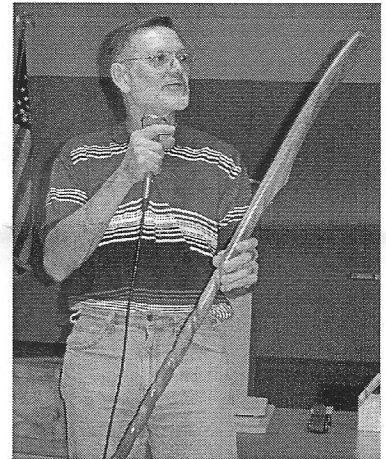
Marcus Brun proudly shows off his two end tables of mahogany and poplar.



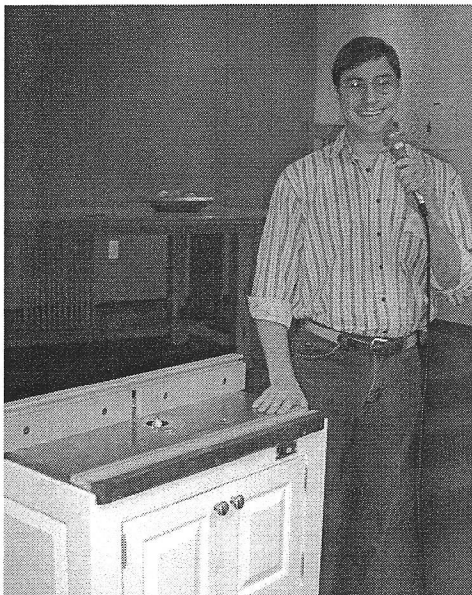
Old postal box doors and cedar make great coin banks. **Bill Cochrane** crafted these.



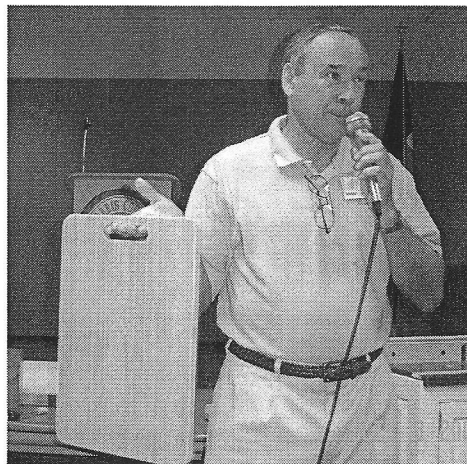
Dottie Forbes crafted this end table with tapered legs. The tenons are ebonized walnut.



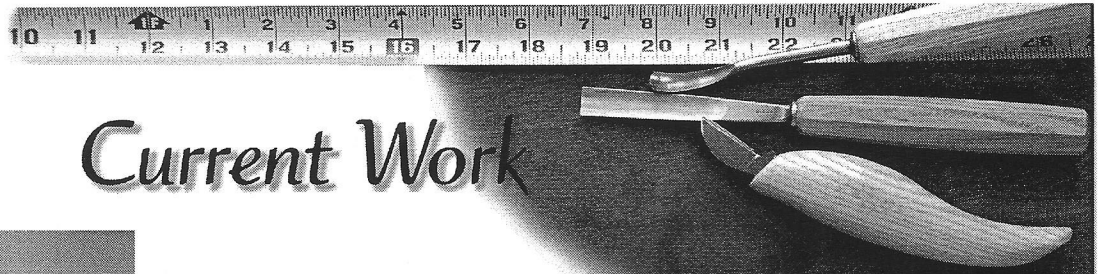
Brian Honey talks about his walking stick that he made with hand tools in a class in Waco. It is made from a 1x4 piece of walnut then lacquer finished.



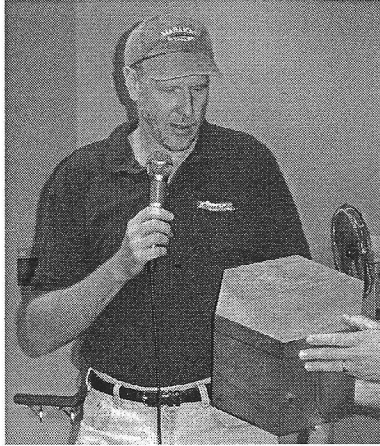
Steve Procter stands by his rolling router cabinet and table. A touch of shop elegance?



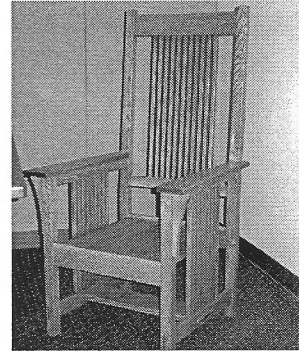
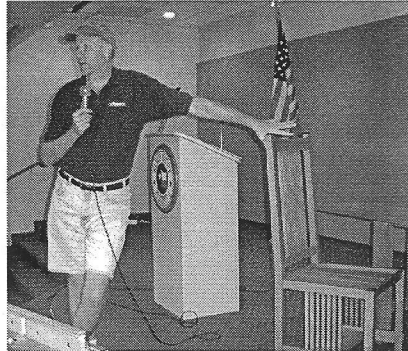
Two cutting boards of bamboo were crafted by **Walter Mason**.



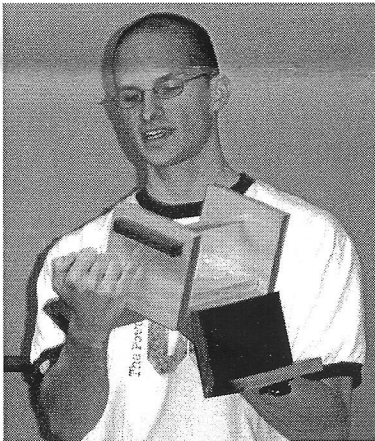
Current Work



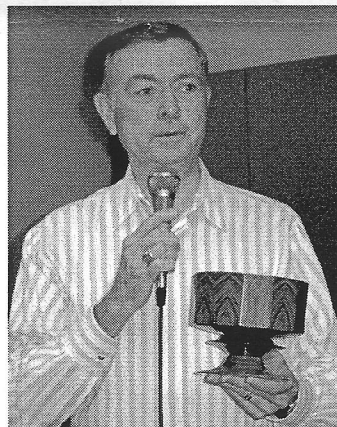
A hexagonal box of birch plywood joined with biscuits is shown to club members by **Rich Thomas**.



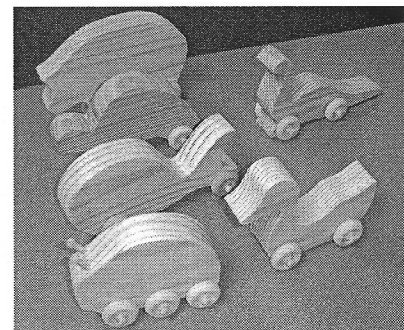
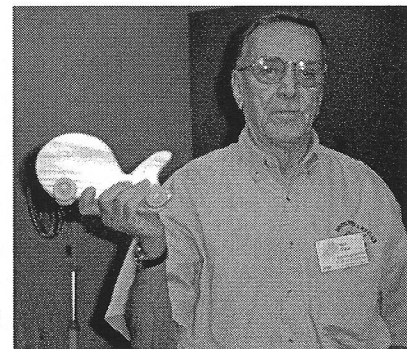
Rich Thomas takes the mike again to talk about his modified Stickley style dining table and chair set. The table features breadboard edges, through mortise joints on the legs and topped off with a pecan stain.



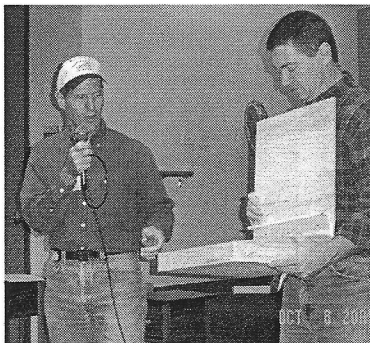
A box of pine, bloodwood and rosewood is handsomely shown off by **Mark Sweigart**.



Arthur Thompson explains how his bowl of Indian teak can be disassembled. It is finished with shellac and then waxed.



Bill Cole bandsawed these toys in a production setting.

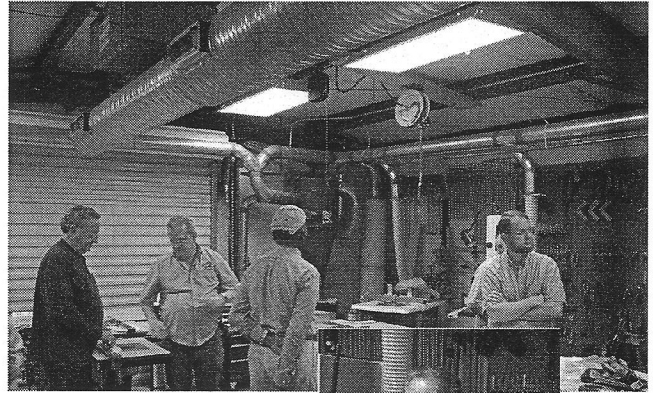


Dennis Serig explains how he modified a laptop writing desk with a rear pencil compartment that is "sealed" when the lid is closed. It keeps loose pencils from being scattered.

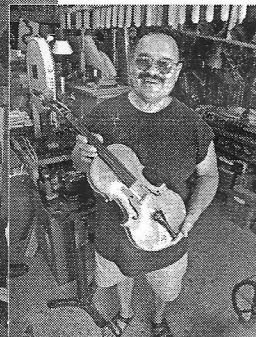
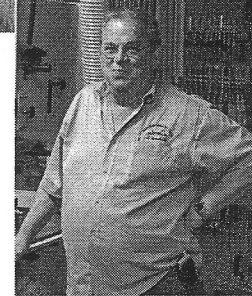
Shop Tour a success for WWCH participants.

By Steve Proctor

The number of participants touring the shops ranged from 25 to over 40. We had an interesting variety of shops, from compact 2 car garage to a large stand-alone building. Some made it to all 4 shops. Most commented that they enjoyed the tour and would like to see us do it again in the Spring. I would like to receive any suggestions on how to improve the tour. Anyone that would like their shop to be a part of a future tour should contact me (I'm in the WWCH Membership Book). If there is sufficient interest, we may try the North/Northwest part of Houston next. Thanks again to **Jim Robertson, Mark Bollinger, Fred Sandoval** and **Steve Proctor** for graciously hosting the tour.

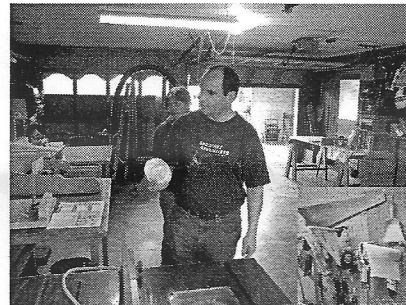


Jim Robertson enjoyed showing members around his shop in a dedicated steel building (with air conditioning).

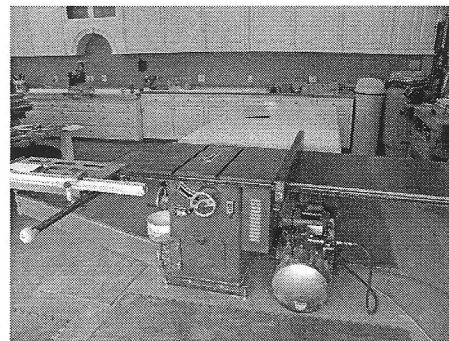
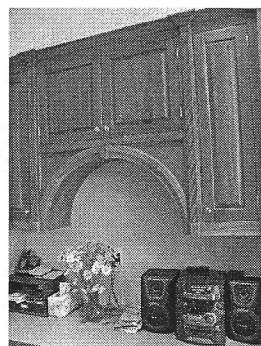
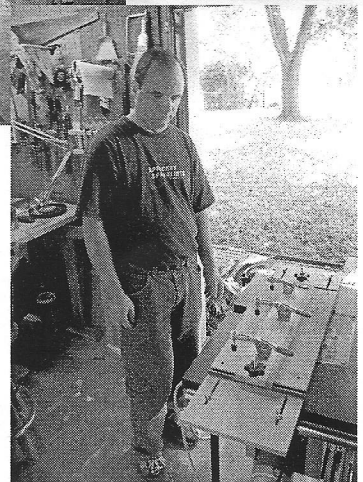


Every inch of available space was claimed in **Fred Sandoval's**

shop. It was a tribute to organization in a small space.



Mark Bollinger points out his dust collection system and a mortising jig he built to fit his needs. Mark also was clever in his use of space that included parking a car in his shop.



Steve Proctor (left) opened his house to members so he could show the product of his shopwork.

Time to pay your dues.



Walter Mason, President

It is time to pay your 2006 membership dues. The dues are only \$24 per year. This rate has not changed in many years and is a great bargain. Support your own educational process, and the WWCH by bringing your checkbook and renewing in November or December.

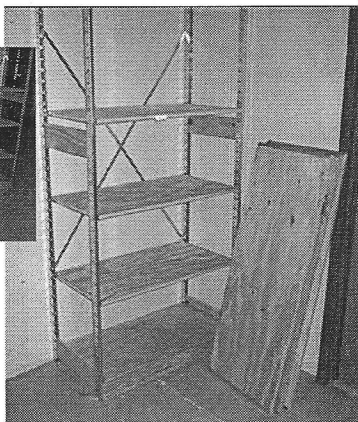
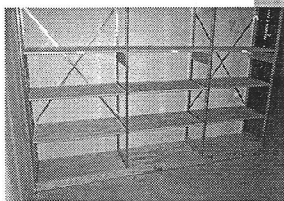
November Program on Antique Tools

WWCH's November program will feature Jim Goodson, an expert on antique tools. Jim will talk to us about the development of tools and the evolution of furniture and building styles as reflections of societal issues of their times.

Dennis Serig

Utility shelf units for sale.

Rugged and versatile metal and plywood shelves can be adapted to your own space requirements. Suitable for garage, laundry room or attic storage these units are fast to assemble and easy to install.



Each upright is 12 ft. X 18 in. and is priced at \$10. Each shelf is 36 in. X 18 in. X 3/4 in.

plywood and is priced at \$5. Unit upright can be cut to desired height.

Contact Andy Anderson at 713 723-1030 or at anndersn@hal-pc.org for more information.

WWCH Contacts:

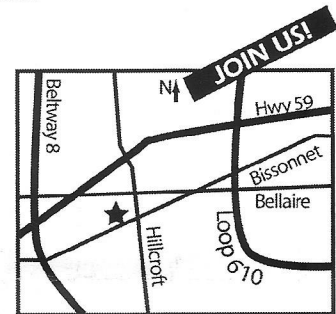
Walter Mason, President: 281.288.7706
Dennis Serig, Vice-President: 281.655.1162
Al Morrow, Treasurer: 713.863.7826
Gary Rowen, Web Master: 281.486.2013
Bill White, Newsletter Editor, 713.524.8768

WWCH Monthly Meetings:

The WWCH meets every month on the second Saturday. We open the doors at 8:30am, the meeting starts at 9:00 and we're finished by 11:30. Guests are welcome and encouraged to attend at no charge.

Our meetings offer a time to discuss problems and seek solutions; see work that members bring in and discuss techniques, design and finishes; catch up on woodworking news and events and hear a presentation by woodworkers, manufacturers or retail firms that is of interest to woodworkers.

Bayland
 Community
 Center
 6400 Bissonet
 Houston, TX 77074



Woodworkers Club of Houston Membership Application

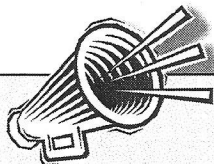
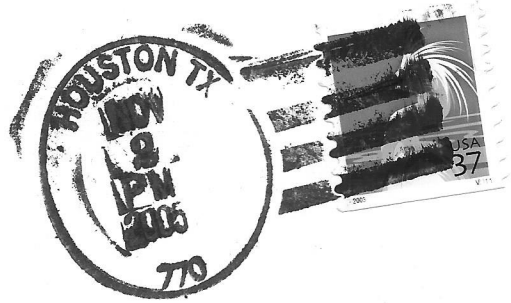
A WWCH membership is a chance to learn about woodworking, visit with other woodworkers, and see some woodworking projects. Your membership includes a monthly newsletter, access to our video and book library, invitation to field trips and occasionally we collectively buy tools at discounted prices. Our dues are \$24.00 a year and, we think, a real bargain. So, we invite you to fill out this application, cut it out and send it to the address below with a check for your dues.

Name _____
 Address _____
 City _____ State _____ Zip _____
 Phone _____

Mail to: WWCH Membership
 502 Aurora
 Houston, TX 77008

Woodworkers Club of Houston

502 Aurora
Houston, Texas 77008

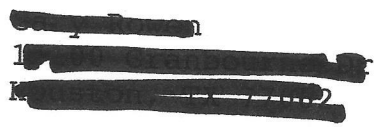


Coming Events

Monthly Meeting:
November 12

Program: Antique Tools by
Jim Goodson

Next Meeting:
December 10



*"The more you sweep your shop, the dirtier it gets."
Jim Tolpin's, Woodworking Wit & Wisdom*

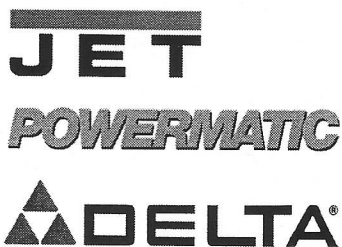
77062+2622-00 C015



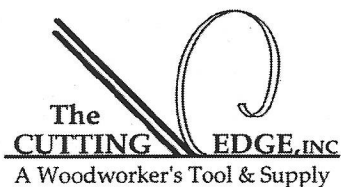
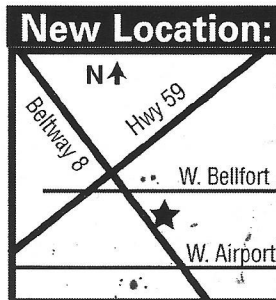
The Cutting Edge offers only the finest woodworking tools and supplies.

Come visit and see our new and expanded store. We've kept all the best lines of supplies and equipment and added lumber and a few other surprises. We're still committed to providing the best sales and service in the Houston area. You won't be disappointed.

- Woodworking Machinery
- Turning Tools and Supplies
- Carving Tools
- English Hand Tools
- Japanese Hand Tools
- Lumber from around the world
- Monthly Woodworking Classes



See our web site for our monthly list of classes and much more:
www.cuttingedgetools.com



Best Prices on JET Machinery Every Day!
Authorized JET Service Center

11760 S. Sam Houston Pkwy W.
713. 981. 9228