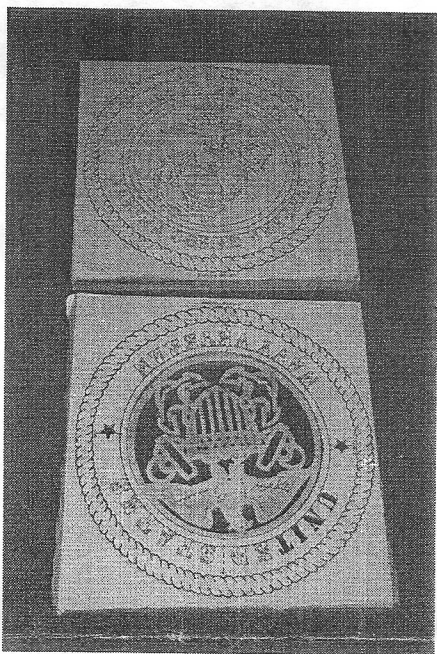


THE WOODWORKERS CLUB OF HOUSTON

VOLUME 18, NUMBER 3

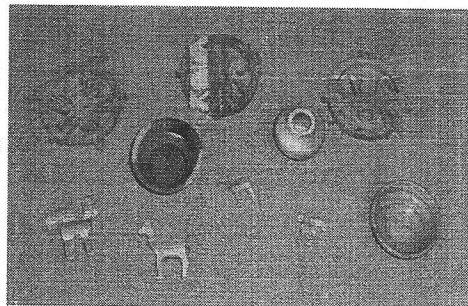
MARCH 2002

WWW.WWCH.ORG



Left: Denis' scroll-sawn replications of two United States Armed Service emblems.

Below: Several pieces, including cedar insects, created by Denis Muras.



New members:

The following people joined our club in February. Please extend a warm welcome to:

March Program:

A Franklin Glue representative will be here talking about their product line and demonstrating their newest glue gun. They will also be asking for volunteers to test some of their new products. Everyone that attends will be given a free sample of Titebond glue. Don't miss it!

April Program

In April, we will have the privilege of Delta Tools as our presenter. More details to come in the next newsletter. Stay tuned!!

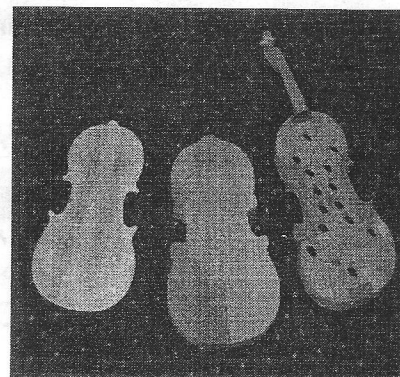
Mike Schmitt

Rich Thomas

Theodore King

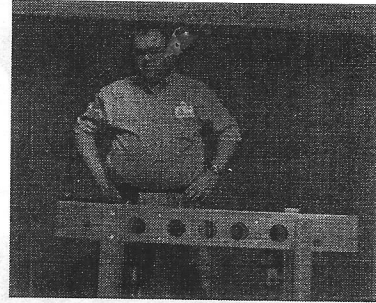
Greg Hill

Right: The beginning pieces of a violin constructed by Fred Sandoval.



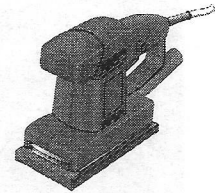
FEBRUARY PROGRAM

Mike Turner gave a well-informed program regarding biscuit, dowel, and pocket hole joinery. Here are some of the notes that he gave to the members at the meeting.



Doweling:

1. Doweling holes must be perfectly aligned.
2. If you don't have a doweling jig, at least use a drill press.
3. Jig clamps do not allow bit to drift and maintains alignment.
4. Don't do pre-fit, check depth of hole with a gauge.
5. Mark stock to keep track of which sides mate to which side.



Biscuits:

1. Biscuit joints are a takeoff from spline joinery.
2. Different sized biscuits for different sized joints — choose the size to maximize glue surface.
3. On your biscuit joiner tool you can set the depth according to the biscuit size.
4. Biscuit joiners are versatile and can drill at an angle.

Pocket Hole:

1. Pocket Holes is a way to make faster and stronger joints.
2. End and edges must be square with each other.
3. Drilling the holes requires a special collared drill bit.
4. Use a finer threaded screw for hardwood and a coarse for softwood.

THREE HOUSTON LOCATIONS:



440 HWY. 6 SOUTH
HOUSTON
281-496-0811

5900 N. FRWY.
HOUSTON
713-697-9909

120 GULF FRWY.
LEAGUE CITY
281-332-9201

DEWALT ~ PORTER CABLE ~ DELTA
JET ~ MILWAUKEE ~ MAKITA
HITACHI ~ BOSCH ~ BESSEY ~ RYOBI
"PROUD SUPPORTER OF THE WWCH"



713-686-6176

FAX: 713-686-3217

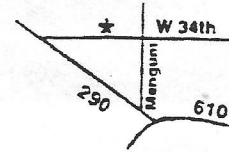
4910 West 34th St, Houston, Texas 77092

Hours: M-F 7:30-5:00 SAT 8:30-12:00

DOMESTIC & IMPORTED HARDWOODS

Ash, Aspen, Basswood, Birch, Aromatic Cedar, Cherry, Cypress, Lacewood, Mahogany, Maple, Oak, Padouk, Pecan, Poplar, Purpleheart, Redwood, Sycamore, Teak, Walnut and more.

- *Quality Domestic & Imported Plywood (Interior & Marine)
- *Edgebanding & Veneer
- *Butcher Block Tops
- *MDF & Melamine
- *Moulding
- *PERSONAL SERVICE
- *PROMPT DELIVERY
- *ON-SITE CUSTOM MILLING



PREZ SEZ:

BY KEN KOOSER

I'm grateful for the excellence attendance at the first two meetings of 2002. I've told the board that our 12 months will really go by fast and that is certainly the truth. Your president was remiss at the February meeting for not recognizing Mr. Denis Muras as past holder of all of the WWCH Offices. In addition to his excellent work displayed at "show and tell" Denis was Vice President in 1991, President in 1992 and served the club as a board member in 1993. Thanks to Denis for his service. Board Member Jack Hutchinson has done considerable work on the show and tell / best of show project and presents some thoughtful ideas in this issue of the newsletter. Your board will be discussing this at the March 9th meeting. I want to hear good debate on this and feel that the board meeting is the place for it to occur.

I believe that most members come to the meetings to learn and participate in the program and certainly not to use the meeting time for discussion. To keep our good meeting room, we must conclude activity in that room by 11:30. Also in this issue of the newsletter is the announcement of the sale of our tool library. These tools are "like new" or unused and will be great bargains for their new owners. The boards decision to get out of the tool business was largely due to not having a central location and a care taker to manage it properly. The issue of liability should someone hurt themselves with the power tools was also a major concern. A really great program is up for the March meeting so lets have a full house.

Looking for great quality Power & Hand Tools?
Pasadena Industrial Supply



222 West Pasadena Freeway, Pasadena Texas 77506 472-5588

AT YOUR SERVICE

President:

Ken Kooser - ~~955-390-4090~~

Vice-President:

Art Chester - ~~281-579-1783~~

Secretary/Treasurer:

Joan Loggins - ~~713-722-3776~~

Director:

Brian Honey - ~~713-529-8403~~

Director:

Jack Hutchison - ~~281-491-2633~~

Director:

Blake Present - ~~281-550-6865~~

Director:

David Reiss - ~~409-925-0851~~

Book Librarian:

John Gay - ~~713-722-7599~~

Video Librarian:

Justin Kelly - ~~281-357-0127~~

Article Search:

Saul Harris - ~~281-341-5373~~

Name Tags:

Joe Edelen - ~~281-437-5937~~

Coffee:

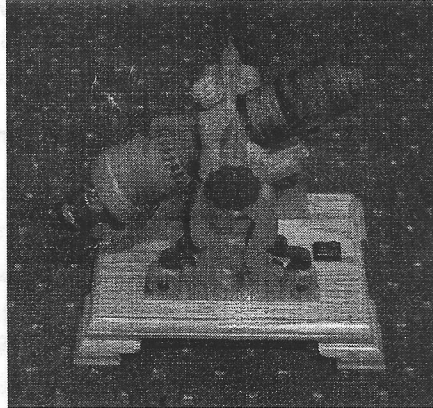
Loretta Buckley &
Bill Hochmuth

Web Master:

Gary Rowen - ~~281-486-2013~~
cgrowen@pdq.net

Newsletter Editor:

Justin Kelly - ~~281-357-0127~~
kelly006@swbell.net



Left: A phenomenal kalidescope made from scrap by John Gay. It actually works!!!

LAETSCH'S SERVICE CENTER

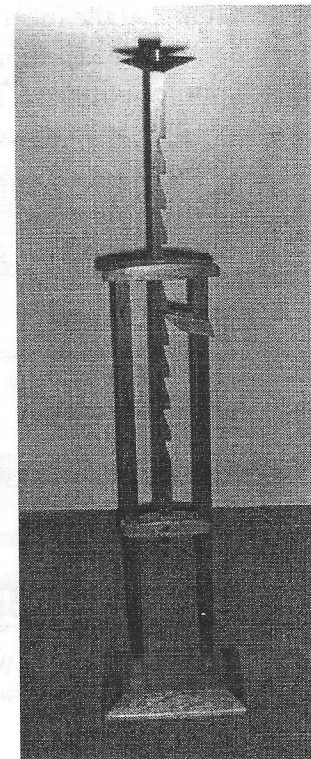
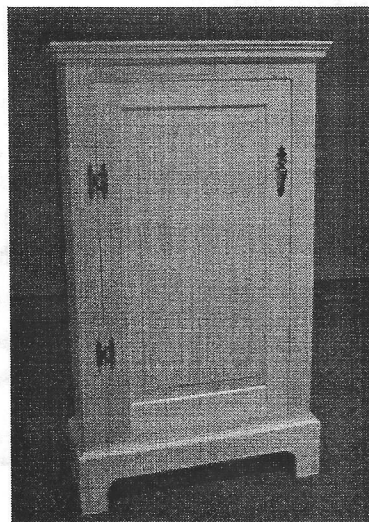
713-462-2894

"Servicing
Shopsmith
Headstocks"

Not affiliated with
Shopsmith.

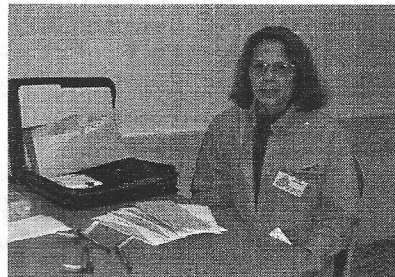
Below: A candle holder made by Brian Mayeaux. He used sawdust and a mysterious chemical to give it the mottled look.

Below Left: Lowell Holmes constructed this ponderosa pine cabinet and mortise and tenon joints on the face frame.



BIOGRAPHY OF A MEMBER

This month's Biography of a Member column features current club secretary/treasurer Joan Loggins. Enjoy reading about the life of a fellow WWCH member!!



Woodworking is strictly a hobby for me. Bill Stephenson and I started accumulating tools about 4 years ago. We work in a double car garage that still must accommodate two cars so all large tools are on mobile bases.

We have built a mobile clamp rack, a small cabinet for table saw blades and another small cabinet for drill bits. We also built a worktable, a miter saw station and a storage unit for the compressor.

I really enjoy making small boxes – some with inlay designs. I have made several storage projects for my home office and a few small display cases for my two daughters and myself. Bill and I work together on larger projects such as an English Garden Bench with a Coffee Table to match. We built a small shed in the back yard to store all of the yard tools.

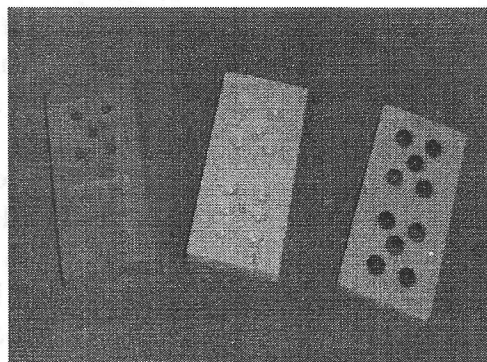
Our shop includes a Ryobi table saw, Jet 14" band saw, Delta compound miter saw, Ryobi scroll saw, Delta 12 ½ planer, Delta 6" jointer, Delta 12" drill press, Delta portable dust collector and a Porter Cable pancake compressor with a brad nailer and a finish nailer. We also have a slow speed grinder, a small Delta belt/disc sander and my favorite a Delta bench top router/shaper. We have several routers, two biscuit jointers, jig saws, several drills, three circular saws and a belt sander. We use a Delta mortising attachment in an old drill press and a Delta tenoning jig.

Currently, I am applying the finish on a coffee table and two end tables that we made for my daughter. My new challenge is trying to learn the art of marquetry.



Above: A beautiful Hepplewhite style hall table constructed by Jack Hutchison.

Below: Some domino tiles made of Corian by Vic Vucinivich.



(continued from pg.6)

Novice wins a monthly Show & Tell award he then automatically would become classified as a Journeyman. A Journeyman would have to win three times in order to become classified as a Master. The competition will then promote enhancement of skills in order to win awards at a higher level, thus earning bragging rights.

Judging by members, as opposed to judging by Directors or appointed judges, provides the broadest possible range of viewpoints and therefore considers all factors, including craft, workmanship, originality, presentation, and personal bias.

Immediately after the meeting break, it is envisioned that the presiding officer would take nominations for candidates in each category, with a vote by hand count of the members. The Club Secretary would keep records, and the Newsletter Editor would publish the winner's names in the subsequent Newsletter thereby providing additional recognition. Nominations and awards should take up less than five minutes of the Club meeting, and it should be fun to see who wins.

Annual awards for each category will be made based on vote by the Board of Directors at the December meeting after reviewing the photos of previous winners. Announcements of the annual winners will be made in January with an award made at that time, and published in the February Newsletter.

Fairness

Club membership consists of a wide variety of skills and levels, from carving to cabinetmaking, and beginner thru professional. Everyone is encouraged to participate in the Show & Tell program regardless of skill. Awards in the form of gift certificates or raffle tickets would be given in order to inspire many more members to participate by providing a fair shot at winning a prize. A \$25 gift certificate from one of the Club sponsors would be granted to the winner(s) of each category. All other participants will receive five free Club raffle tickets for the monthly drawing. If you compete, you win. Annual winners in each category will receive a \$100 gift certificate.

Cost

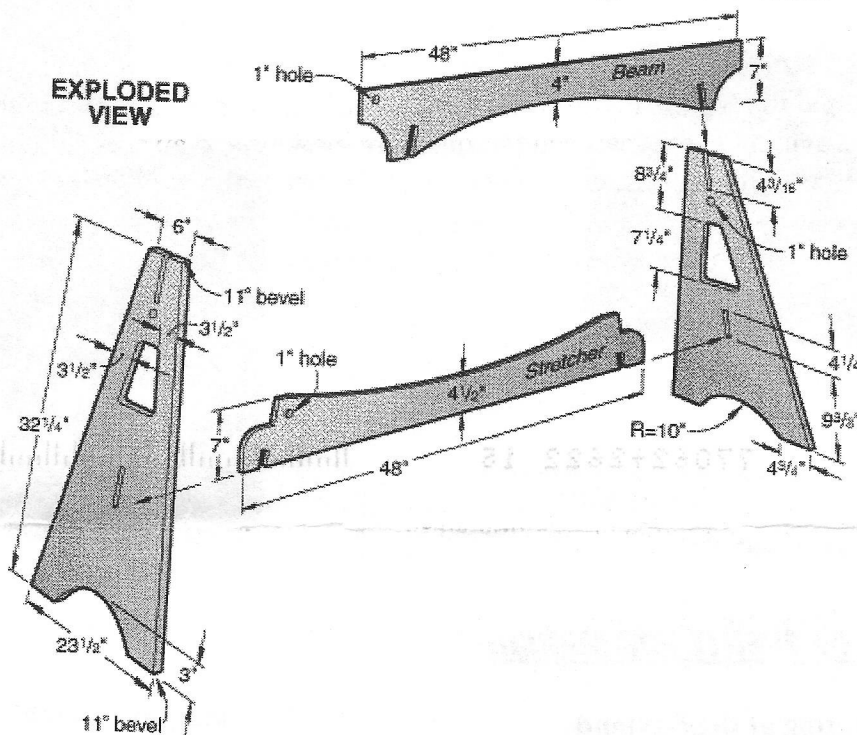
The cost of administering the award program would be about \$100 per month, or less than \$1500 per year, to be borne by donations from Club sponsors and the Club treasury. This appears to be readily doable as Club sponsors have traditionally been generous, and donations from vendors that generate treasury receipts from Club raffles and auctions have been good to-date. Other Club expenses are borne by the Club dues, so the Club has been generating cash surpluses in recent years. As a non-profit organization, the Club cannot retain significant cash from one year to the next per IRS regulations. This program is designed to simultaneously serve to meet that goal.

Our objective is to make the Club more informative, exciting, and pleasurable for everyone. The board welcomes your views. We do not want to take up valuable meeting time with a general discussion of this, however if you have any comments on the above proposal, or any other ideas as to how to improve the Show & Tell program, please let us know. You can email me at Jack_Hutchison@hotmail.com, or call one of the other Board members with your comments, and your views will be sure to be heard at the Board meeting. It is anticipated that the Board will vote on this issue at the March meeting.

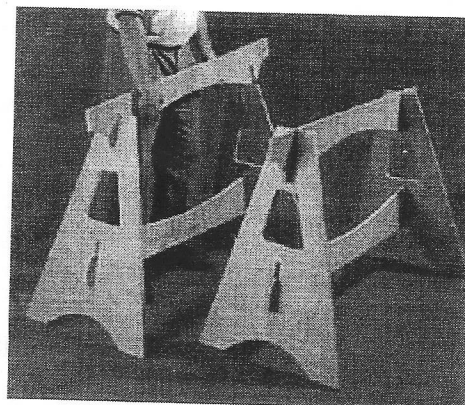
PROJECT OF THE MONTH

Knockdown Sawhorses

A pair of sawhorses come in mighty handy when you cut sheet goods or need to set up a temporary work area. But where do you corral them when you're not using them? If you build these sturdy horses, designed by WOOD® magazine reader Wade Olson, you simply break them down and hang them flat against the wall.



With no hardware to fuss with, you can assemble and disassemble the pieces in just a few seconds. Plus, because they're made completely of wood, you'll never have to worry about catching a saw blade on a metal bracket or fastener. One full sheet of 3/4" plywood yields a pair of sawhorses. See the drawing **above** for an exploded view of the sawhorses and how they are built.



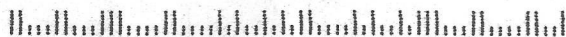
Reprinted with permission by Wood Magazine.
www.woodmagazine.com.

**WOODWORKERS CLUB OF HOUSTON
30630 QUINN ROAD
TOMBALL, TEXAS 77375**



Gary Rowen
15100 Crabbourne Dr.
Houston, TX 77062

77062+2622 15



CALENDAR OF EVENTS FOR MARCH:

**3/09/02 - Meeting at the Bayland
Community Center - 9:00 A.M.**