

WOODWORKERS

CLUB OF HOUSTON

VOL. 4, NO. 6

JUNE, 1988

Officers

Sharon Buckley - President
Kent Moore - Vice President
Don Richardson - Sec./Treasurer
Steve Procter - Newsletter Editor

Andy Anderson - Board of Directors
Jimmie Harp - Board of Directors
Ron Kuenning - Board of Directors
Hebert Wilbourn - Board of Directors

MAY MEETING

Our thanks to M. Chandler for the use of his space, lathe and donuts.

Don Hart and Archie Hartkopt demonstrated bowl turning. He turns green wood into bowls and vases. His technique is rapid stock removal. He uses wood available from fire wood vendors and found wood.

Don explained how he makes some of his tools from machine tool steel. He also makes his own spalted wood--by setting the wood on its end directly on the ground, in a few months, he has spalted wood.

Zatis Murphy safety topic was on Hearing Loss. Osha has maximum hours of exposure. Loud noise can result in temporary or permanent hearing loss.

Foam Plugs are recommended as cheap, good protection.

Ear Muffs offer better protection, but may not be as comfortable.

Buy what is comfortable to you---that way you'll use it.

CLUB NEWS

Our sympathies to the family of Don Fortner, who passed away. A sympathy card was signed by all the members.

NEW BUSINESS

The charity sale was unanimously voted in as the main club activity for 1988. Committees have been formed--see insert sheet for listings.

Make-a-Wish and Boys Harbour were nominated. Additional nominations and voting will be done at the June Meeting.

WORKSHOPS AND CLINICS

Chuck Maxwell will have a raised panel clinic June 25.

TAPE LIBRARY

We have two new tapes: 1. Table Saw Techniques and Jigs. 2. Six Shopsmith tapes on furniture (mostly for beginners or intermediate--not advanced.)

Due to the tardiness of the members in returning of the tapes and books, the members have voted on fines: \$1.00 on Books
\$5.00 on Tapes

Please get your books and tapes back on time.

PRESIDENT'S CORNER

By Sharon Buckley

Enclosed in this newsletter is a Pull Out Sheet for you to keep handy for reference purposes. We have listed all the committees it takes to keep this club running so smoothly, the charity show committee chairmans, who will be asking for your help in the coming months. There is also a list of the video tapes in the video library.

Steve mentioned earlier that we will be voting at the June meeting for which Charity we will be working for, if you have a favorite Charity and would like to tell us about them, we will be glad to here from you.

DUES--- Do you wonder where your dues go. Our Biggest Budget item for the year is this newsletter and postage.

In the past years the club has purchased the Video tapes and the Public Address System.

This year we just purchased a 55 cup Coffee Pot--which we hope over years will pay for itself and the coffee and accessories it takes to have coffee at the meetings.

Michael Chandler was kind, to purchase the Donuts for the May Meeting. We did collect Quarters for both coffee and Sweets. we now have a little money in the coffee kitty to pay for the coffee and sweets for the next meeting--as long as we break even each

meeting we can continue to offer coffee and treats at the meeting.

These are paid for by the people that drink the coffee and eat the sweets and not out of the general fund.

PROBLEMS AND SOLUTIONS

Bill Baker wanted to know how to get the play out of his Sears Radial Arm Saw. It was suggested that he remove the cap off of the vertical support and tighten the screws inside the vertical support.

Ed Burger had a champfering plane that would not champfer.

There was a discussion on alternates to roll top cabinets.

SAFETY

By Zatis Murphy

The following item was submitted to me by Robert Sandlin. Thanks, Robert!

THE WOODWORKER'S SAFETY TEN COMMANDMENTS

1. Use protective equipment whenever necessary: eye protection, hearing protection, hard hats, respirator, etc.
2. Use proper guards on all power equipment, plus proper operating positions and procedures.
3. Operate power equipment only after reading or receiving proper instructions.
4. Inspect hand tools and keep them in good condition.
5. Store all materials in a stable and secure manner.
6. Eliminate dust and dirt in the area by vacuum, if possible, rather than blowing or sweeping.
7. Store flammable liquids in suitable containers or cabinets.
8. Store combustible waste material in covered metal containers and dispose of it daily.
9. Provide adequate ventilation, particularly in finishing and drying areas.
10. Know where first aid can be found and where fire extinguishers are.

The following are some additional rules for woodworkers to follow--submitted by Gayle Robinson.

RULE 1 Safety First

Smashed fingers, junk in your eyes, or more serious injuries are not worth the project.

RULE 2 Do Only One Thing At A Time.

Let's face it. There are limits to human potential.

RULE 3 Unless You Are A Expert, Follow Direction As Given.

Anyone who has assembled a metal storage building has learned this one.

RULE 4 Get All Supplies Together Ahead Of Time.

Here are a few quotes heard on various afternoons after the stores have closed: "I could have finished the whole thing in an hour if only I had a 6-inch bolt." "Well, at least we finished painting most of the wall." Don't needlessly run out of essential materials.

RULE 5 When Cutting Anything, Measure Twice and Cut Once.

This is the most important rule for keeping down costs. Remember it. A botched cut is costly.

RULE 6 Control Your Temper.

Flying wrenches, bashed-in walls (etc), are costly, exhausting, and dangerous. Take a break.

RULE 7 Don't Force Anything.

Plastic breaks, wood splits, metal stretches and bends. When it comes to forcing things, we often find that we are stronger than we think.

RULE 8 Use Only Tools You Know How To use.

Most tools are much more effective if you practice a little before letting loose on your intended project.

RULE 9 See The Job through.

Frequent breaks in the continuity of work and thought often contribute to inferior craftsmanship. It can often make the job harder.

RULE 10 Write Your Plan Down.

Unless you can clearly visualize each step, from beginning to end, sit down and develop a methodical plan. If you are stumped on something, read and ask questions until you find out what you need to know.

BUY AND SELL

For Sale:

4" Shopsmith Jointer \$240.00 Murray Gordon
Shopsmith Bandsaw \$ 240.00 Murray Gordon

Duofast Framing Gun \$395.00 Lewis Vallette

Ringmaster Ronnie Derks

10" Ryobi Planer \$350.00 Claude Denson

SHOW AND TELL

Don Richardson demonstrated a computer generated shop drawing, as soon as he perfects it, he says he will give a clinic.

Bill Hochmuth made some very nice jigsaw Duck puzzles, which is going to donate to the Charity Show.

Chuck Maxwell is refurbishing a trailer and ran into a problem finding a filigree masonite. After contacting the masonite representative, who said they hadn't made that type of material in 18 years. Chuck used his pin router and made his own filigree masonite. Well Done !

Ed Burger showed us a jelly bean machine for dispensing jelly beans in a very interesting manner. His machine was made out of maple, he adapted the plans, so he could remove the acrylic faces, so they could be cleaned.

Ken Wallis had photos of a maple baby bed he made for his grandchild. He also showed some very beautiful bowls he made using staved bowl construction. The bowls were finished using Bartley's Paste Varnish, that you rub on.

SHOP TALK

By Don Sloan

For those of you who make craft items, and use a pattern taken from a magazine or book here is an easy way to do it. Take the pattern to a quick copy. for 5 cents you get a copy 1/4 to 1/2 full size etc. If you are going to make more than one, glue the copy on to a piece of masonite and cut it out. Use the yellow or white wood workers glue--diluted down to 1/4 or less. If you are only making one piece of work--glue the copy directly to your wood. Then sand it off. It is a lot quicker and more accurate than tracing it on tracing paper then transferring it with carbon paper to your wood.

SPEAK OUT

By Zatis Murphy

I'm not a creative person. That is a fact ! Many times I've tried to start with a good idea and design something, but almost without fail, the finished product lacked stability, functionality, esthetic appeal, or whatever. But... I'm a pretty good mechanic ! Show me some plans that someone has created and I can put it into practice. that's why I like woodworking.

I truly enjoy working with my hands and building a project. I get a feeling of accomplishment when I can stand back and look at the finished work, knowing that I have spent the time and Patience (something I've learned within the last years) to produce something worthwhile. My creativity, however, is limited to minor modifications to the work.

So, who are the creative people I can thank for giving me the ideas for projects, the tips on techniques, the advice on tools, the help on finishes ? Certainly, many authors of books on woodworking and many members of the Woodworkers Club of Houston. I thank you. My special thanks also to the officers and board of directors of our club for their time and effort spent making our club worthwhile.

I propose a challenge ! Let's make our club even better ! What would it take? PARTICIPATION ! If you've not been active in the club in the past, become so in the future. You have valuable contributions to make by serving on committees, conducting clinics or workshops (poor Murray, my heart goes out to him, trying to get some clinics off the ground), writing "speak-out" articles, etc. You'll be surprised at the rewards.

JUNE MEETING

WHEN: JUNE 11TH 9:00 A.M.
WHERE: WAY ENGINEERING CLASSROOM
5304 ASBROOK

PROGRAM: The use and care of Japanese Hand Tools.

Tom Colby will be demonstrating the use and care of Japanese Tools, which if you have ever used one you know they work very differently from U. S. or European tools. Tom last did this program June 11th, 1983. He has also been a club member since then. Hve you purchased a Japanese tool and can't get it to work, bring it to the meeting and I'm sure Tom can help you.

DIRECTIONS: Take the 610 Loop and exit at Fournace/Bissonet, which is the first exit South of the Southwest Freeway(Hwy. 59). Turn west onto Fournace. Proceed to Royalton and turn South, go to the next street which is Ashbrook turn West.

NEWSLETTER INFO

THE JULY NEWSLETTER

LAST DAY FOR PUBLISHING-----JUNE 21, 1988

THE NEWSLETTER WILL BE MAILED THE WEEK OF JULY 5TH.

Would you like to join the WOODWORKERS CLUB OF HOUSTON???? Bring your \$12.00 to the meeting or send to WOODWORKERS CLUB OF HOUSTON P. O. BOX 34481 HOUSTON, TEXAS 77234.

Would you like to advertise in the WOODWORKERS CLUB OF HOUSTON NEWSLETTER. For a flat fee of \$100.00 you will have your business listed in 12 issues of this newsletter and receive Membership Rosters, undated periodically, with the names and addresses of all members.

WOODWORKERS CLUB OF HOUSTON

1988 COMMITTEES

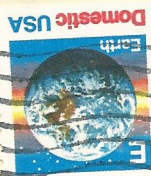
COMMITTEE:	CHAIRMAN:
ADVERTISING(NEWSLETTER):	BILL SALLANS
CHARITY SALE EVENT:	SAM ZEISMAN
CLINICS & WORKSHOPS:	MURRAY GORDON
FIELD TRIPS:	BOB SODERBLOM
GROUP PURCHASES:	LEONARD EKHOLM
LIBRARIES: BOOKS:	ANDY ANDERSON
VIDEO TAPES:	MURRAY GORDON
MEMBERSHIP COMMITTEE:	HEBERT WILBOURN BILL SALLANS
NAMES TAGS: PRINTING:	SHARON BUCKLEY
NAME BOARD:	CHUCK MAXWELL
NEWSLETTER: EDITOR:	STEVE PROCTER
ASSOC. EDITOR:	GAYLE ROBINSON
PRINTING:	JOHN & BARBARA ARNETT
ADDRESS LABELS:	SHARON BUCKLEY
MAILING:	HENRY REED
NOMINATING OFFICERS:	BOARD OF DIRECTORS
PROGRAMS:	ANDY ANDERSON
REFRESHMENTS:	BILL BAKER
ROSTER(MEMBERSHIP):	SHARON BUCKLEY
SAFETY:	ZATIS MURPHY
TELEPHONE COMMITTEE:	JIMMIE HARP

WOODWORKERS CLUB OF HOUSTON
1988 CHARITY SHOW COMMITTEES

COMMITTEE	CHAIRMAN
CHARITY SHOW CHAIRMAN	SAM ZEISMAN
TELEPHONE	JIMMIE HARP
GROUP PROJECTS	CHUCK MAXWELL JIMMIE HARP
ADVERTISING & PUBLICITY	BILL SALLANS
PICKUP, DELIVER & SETUP	DON SLOAN
TIME SHEETS	HEBERT WILBOURN
PROJECT COORDINATOR	BOB SODERBLUM

VIDEO TAPE LIBRARY

BOWL TURNING	1 HOUR	
DOVETAIL A DRAWER	1 HOUR	FRANK KLAUS
WOOD FINISHING	2 HOURS	FRANK KLAUS
RADIAL ARM SAW JOINERY	1 HOUR	
HAND PLANES--BENCH PLANES	1 HOUR	
HAND PLANES--SPECIALTY PLANES	1 HOUR	
MORTISE & TENON JOINERY	1 HOUR	FRANK KLAUS
SHOP TIPS & TECHNIQUES	1 HOUR	
MORTISE & TENON/SHOP TIPS (COMBINED TAPE)	2 HOUR	
TABLESAW TRICKS & JIGS	1 HOUR	
SHOPSMITH WOODWORKING SERIES	3 HOUR	



Woodworkers Club of Houston
P.O. Box 34481
Houston, TX 77234

ALLWOOD/SCHROEDER INC

Imported & Domestic

Marine Plywood
Parana Pine
Mahogany

Teak
Exotic Hardwood
Domestic Hardwood

Quality
Hardwood - Softwoods - Plywood
Mouldings & Squares
Self-service

A complete selection of finishing supplies

WALNUT - BIRCH - ASH - CHERRY
CYPRESS - RED AND WHITE OAK
SUGAR PINE AND OTHERS
MON. - FRI 8:00 TO 5:00

SAT - 8:00 TO 1:00

5401 Lawndale
(713- 921-6131)

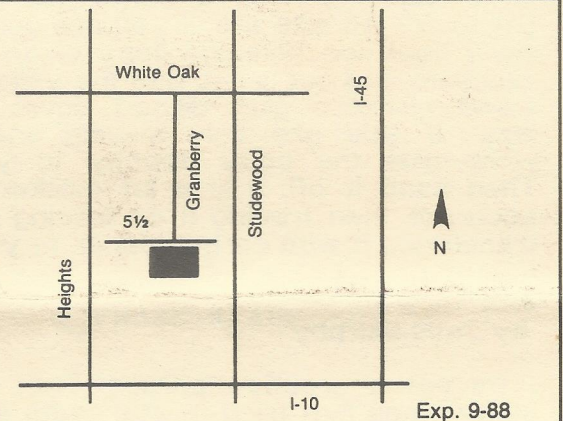
Exp. 5/89

HARDWOOD LUMBER CO.

700 E. 51/2 St. (In The Heights)
Houston, Texas 77007
(713) 862-6628
Hours: M-F 7:30-5:00, Sat. 8:30-1:30

We stock over 65 species of lumber including
hard to find exotics!

Also: Plywood, Veneer, Moulding, Formica,
Custom Milling, Woodworking Tools, Books, etc.



Exp. 9-88

Send Today for the Most Complete Catalog Selection of Woodworking Supplies

Please Enclose \$1.00 (3rd class) or \$2.00 (1st class)

Name _____

Address _____

City _____ State _____ Zip _____

Orders Shipped Within 48 Hours

Exp. 5/89

21801 Industrial Blvd., Rogers, MN 55374

