

# Woodworkers Club OF HOUSTON

VOL. 6, NO. 7

JULY, 1990

## Officers

Don Richardson - President 661-1365  
Ted King - Vice President 351-6808  
Claude Emory - Sec./Treasurer 861-3495  
Sharon Buckley - Newsletter Editor 944-6739

## Board of Directors

Bill Baker - 667-8381  
Bob Gallant - 376-0276  
Bill Hochmuth - 774-1733  
Bill Sallans - 465-0291

### JUNE MEETING

Our June program was presented by one of our own members Joan Brueggeman, on Chip Carving. Joan is also a past president of the Woodcarvers club of Houston. She and her husband took a week long chip carving course in Chicago from Wayne Barton.

One thing about chip carving you don't need an expensive shop of tools or a large workbench. Just a lap. Yes you do chip carving on your lap.

Joan has been carving since she was a child, she does a variety of carving, in the round and in the flat. Some carving she uses chisels and a mallet, but when chip carving all you need is two knives.

The first step in chip carving is the layout your project. The layout must be very precise.

You can also change the look of a carving by how you carve it, in the positive or the negative.

You must always remember where the point of the knife is as you make three cuts in triangular shape and the chip should pop out.

The cut is a very controlled cut, which means the knife must be very sharp.

Joan sharpens her knives with a ceramic stone because a ceramic stone does not require honing oil which could spoil the carving.

Joan does not recommend a diamond stone as it will leave scratches on the blade.

The blade should be polished so that it will slip through the wood with ease.

Joan prefers to use basswood and butternut. Walnut is also preferred but is very hard.

You can get started in chip carving with a Two knife set for any where from \$20.00 to \$26.00 and a ceramic stone for around \$30.00.

### CHARITY SHOW AND SALE

Bill Baker needs a few more workers for the show and sale on both days, if you can help out, let Bill hear from you. Don't be shy.

Sale Items: as always we need lots and lots of items. The items can range from very small to very large furniture items. Make what you like or have fun making. We would like to have as many members as we can to donate.

### NEW BUSINESS

Field Trips -- we are in the process of trying to line up some field trips of interest to the members. The officers are trying to line one up in the next couple of months, but you can never tell. We had been talking to a rocking chair maker, we must have brought him good luck, because he became so busy that he was working seven days a week. But we keep trying--don't give up.

### CLUB CAPS AND SHIRTS

We hoped to have the shirts ready by the July meeting but we have not gotten enough orders to place the required minimum order of shirts. If you want a shirt please place your order with payment with Sharon Buckley by or at the July meeting. If we don't get enough orders for the shirts we will return everybodys money and try again later in the year.

### WORKSHOPS AND CLINICS

Stuart Murphy has received lots of suggestions but too few volunteers to host a workshop or clinic, if you can help out talk to Stuart.

### JULY SEMINAR/ SWAP--MEET

The July woodworkers meeting will be followed by a seminar in the form of a "favorite plan swap meet". Members will have the chance to swap their favorite plan for that of another member. How shall this come to pass. At the July meeting obtain a ticket to the swap-meet by bringing 2 photocopies of your favorite plan (small or large) and exchange the plans for a ticket. When the meeting adjourns



come to the craftroom and redeem your ticket for the plan of your dreams. Tickets will be available from Stuart. Remember to bring 2 copies and join the melee.

#### **SAFETY HEARING PROTECTION**

By Murray Gordon

When using power tools always wear ear protection. Just an increase of 3 decibels is equivalent to ten times the exposure to loud noises.

Hearing protection was originally swedish wool or cotton batting which is really useless.

Ear R. Plugs (brand name) is made from foam, you roll them between your fingers and place in the ear. When finished you just throw them away. This is the style preferred by industry as they are sanitary, you can still hear normal voices but filters out loud sounds.

There is a variety of hearing protection available, choose the style that your prefer and will wear. If they are not comfortable to use you will not wear them and hearing protection sitting on a shelf will not do any good. **WEAR EAR PROTECTION !!!!!!!!!!!!!!!**

#### **PROBLEMS AND SOLUTIONS**

Don Richardson had some problems with finger joints for a brief case he is making for the charity show. The joints were not cut just right and a short time after assembly the internal stresses caused the box to warp.

Chuck Maxwell has some mahogany that he purchased three years ago and sap is still bleeding after 3 coats of watco.

Robert Sandlin needed numbers for clock faces--suggestion Klock kit.

Belt buckle backs can be purchased at Tandy's Leather or Jeanne's Rock Shop.

#### **BUY AND SELL**

Chuck Maxwell --For sale Mille-Route with table \$300.00

For Sale--Sears 12" Bandsaw and Sears wood lathe with tools--price 1/2 of sale price contact John McCoy 341-7108.

For Sale : We received a request to aide the widow of a woodworker (a non-member) is selling some supplies and a large variety of hardwoods and veneers. All tools have been sold. She also has a minuteman mini-Deluxe Furniture Restoration sustom along with a mirror resilvering system. Her name is Nonno Cejda at 548-1337.

#### **SHOW AND TELL**

Guy Meader had a Walnut coffee table finished with Bartley's. Guy used a filler applied with a burlap bag applied across the grain. Clean with clean cloth in the direction of the grain. Guy used some corner jigs, which he made for squaring up when gluing. Make sure to cut the jigs square.

Denis Muras had a replica of the train he made for a play at the Alley Theatre. He also donated it to the Charity Show. ( The train has allready been sold and the money is in

the bank.)

Chuck Maxwell had his Mahogany Santa Fe Bench, he got the plans out of Woodworkers Journal. If you want to build the bench you should talk to Chuck first, because some of the dimensions are missing.

Ed Smith turned a bowl out of green mesquite. Ed says he never throws away sandpaper and never buys 400. If you use it long enough it becomes very fine sandpaper. He applies duct tape to the back of his sandpaper for support.

#### **CORRECTIONS TO THE JUNE NEWSLETTER**

As the saying goes haste makes waste--It was brought to my attention that I promoted Don Sloan to President and eliminated Don Richardson. I apolligize to both and hope I didn't completely shock Don Sloan or Don Richardson.

June must have been a bad month maybe I can blame it on a full moon, but I also stated that Hydrocote contributes to lung or brain damage, but it should have read that it does not contribute to lung or brain damage.

#### **NOMINATIONS FOR CHARITY SHOW**

At the July meeting we will entertain nominations for which charity you would like to contribute all the monies from the Charity show and sale. If you have a favorite Charity and would like to nominate we will accept all nominations. Publish all nominated charities in the August newsletter and vote on them at the August meeting.

#### **JULY MEETING**

**WHEN:** JULY 14, 1990 9:00 A. M.

**WHERE:** BAYLAND COMMUNITY CENTER  
ON BISSONNET AT HILLCROFT

**PROGRAM:** The program will be on jigs, presented by Mr. Jig himself Chuck Maxwell. We kid Chuck but he does use jigs for almost everything he does. He invents many that he uses but he also adapts or "Maxwellizes" the jigs that others have invented.

#### **SAFETY ON THE TABLE SAW**

( CON'T FROM LAST MONTH'S NEWSLETTER)

Be very careful of stock which is pitchy, knotty or warped. These are more likely to create pinching conditions and possible kickback.

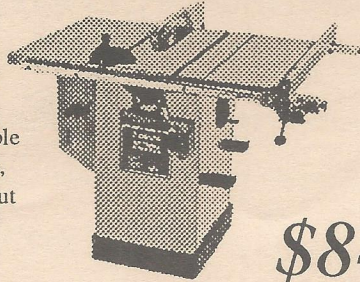
Never use a bent, broken or warped saw blade. The probability of binding and creating a kickback is greatly increased.

Overheating a saw blade can cause it to warp and create a kickback. Buildup of sap on the blades, insufficient set, dullness, and unguided cuts can all cause an overheated blade.

Do not use more blade height than is required to cut the workpiece--1/8 in. to 1/4 in. greater than the thickness of the stock is sufficient. this minimizes the amount of saw blade exposed. Never use miter gauge with the rip fence.




# Pasadena Industrial Supply



Power Tool & Accessory  
Headquarters for;  
Delta Machinery, Porter-Cable  
Milwaukee, Hitachi, Bosch,  
Makita, Skil, Saftey-Speedcut  
& More!

## New 10" Tilting Arbour Saw

- 0 & 45 adjustable from table top • 2 hp 230 volt TEFC motor
- Miter gauge & rip fence storage • Motor cover included
- Auto overload protection with push button switch
- T slotted table provides support for miter gauge beyond table edge

**\$849** Delta# 36-755 

222 West Pasadena Freeway, Pasadena Texas 77536 472-5588

## Hardwood Lumber Co. Lawndale Division Imported and Domestic

Quality  
Hardwoods - Softwoods - Plywoods  
Mouldings & Squares

A COMPLETE SELECTION OF FINISHING SUPPLIES.

Marine Plywood  
Parana Pine  
Teak

Honduran Mahogany  
Exotic Hardwoods  
Domestic Hardwoods  
WALNUT - BIRCH - ASH - CHERRY  
CYPRESS - RED AND WHITE OAK  
AND OTHERS

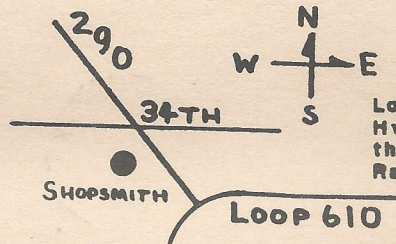
MON. - FRI. 7:30 TO 4:30  
SAT. 8:00 TO 1:00

5401 Lawndale  
(713) 921-6131

Exp. 12/90

## Your Complete Woodworking Center Check Out Our Hardwoods, Our Prices Are Low

Hours:  
Monday to Friday:  
10:00 a.m. to 8:00 p.m.  
Saturday  
9:00 a.m. to 5:00 p.m.



### Shopsmith Inc.

Located at 34th St. &  
Hwy. 290 to Austin on  
the West side in the  
Randalls Strip Center.

Northway Shopping Center  
10965A Northwest Frwy.  
Houston, TX 77092  
Phone: (713) 681-5200

Exp. 1/91



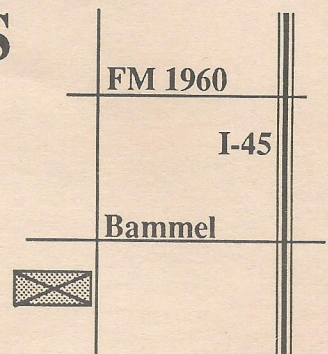
## AUSTIN HARDWOODS

13001 VETERANS MEMORIAL DR.  
HOUSTON, TEXAS 77014

**440-0764**

We stock over 80 species of lumber including rare exotics and turning stock. Plywood, Veneer, Moulding, Flooring, Tools, Millwork, Paneling Etc. also available

Exp. 8/89



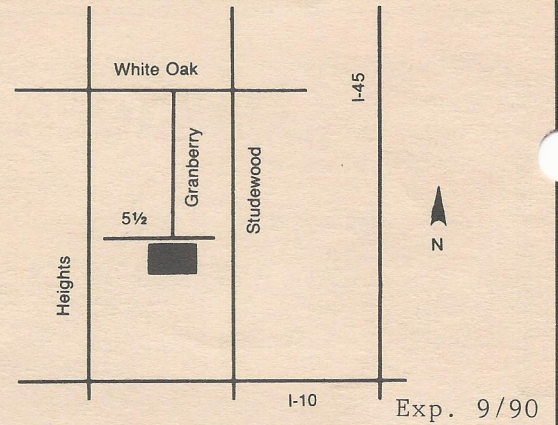


# HARDWOOD LUMBER CO.

700 E. 51/2 St. (In The Heights)  
Houston, Texas 77007  
(713) 862-6628  
Hours: M-F 7:30-5:00, Sat. 8:30-1:30

We stock over 65 species of lumber including  
hard to find exotics!

**Also:** Plywood, Veneer, Moulding, Formica,  
Custom Milling, Woodworking Tools, Books, etc.



## Send Today for the Most Complete Catalog Selection of Woodworking Supplies

Please Enclose \$1.00 (3rd class) or \$2.00 (1st class)

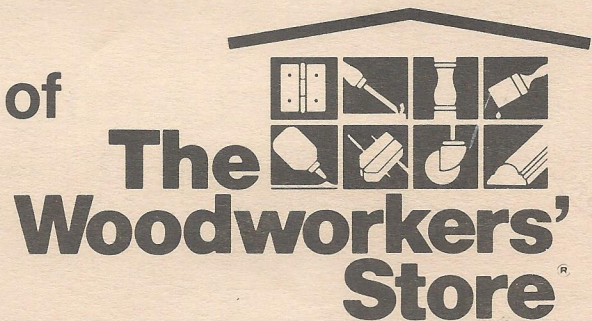
Name \_\_\_\_\_

Address \_\_\_\_\_

City \_\_\_\_\_ State \_\_\_\_\_ Zip \_\_\_\_\_

*Orders Shipped Within 48 Hours*

Exp. 1/91



21801 Industrial Blvd., Rogers, MN 55374

PRINTED BY SPEEDY PRINTING SERVICE OF TEXAS 3727 W. ALABAMA, HOUSTON, TX. 77027 (713) 877-8466

Woodworkers Club of Houston  
P.O. Box 34481  
Houston, Tx 77234

