

WOODWORKERS

CLUB OF HOUSTON

VOL. 3, NO. 7

JULY, 1987

Officers

Bob Soderblom - President
Jimmie Harp - Vice President
Ron Kuenning - Sec./Treasurer
Steve Procter - Newsletter Editor

Steve Procter - Board of Directors
Rick Goodheart - Board of Directors
Harold Evans - Board of Directors
Hebert Wilbourn - Board of Directors

JUNE MEETING

Our main speaker for the June Meeting was Michael Klecker. He demonstrated several large machines manufactured in Europe for large shops. The real screamer was an edge bander that could apply, cut and trim 40 feet per minute. He also demonstrated a large panel saw that could do everything except make coffee! It is accurate to a few thousandths of an inch, with a veneer score. These machines cost as much as a car, and are as complicated. For more information and demonstrations, see the M. CHANDLER CO., one of our advertisers. Thanks, Michael for the fine demonstrations.

Zatis Murphy volunteered to take photos at the meetings for our scrap book.

Hebert Wilbourn and Bob Soderblom showed photos of their trip to a working Sawmill. A road trip is being organized for Sept. 19 for a return visit to this sawmill. Sign up with Sharon Buckley.

Zatis Murphy gave a good talk on safety procedures to use in the event of a major injury, such as cutting off a member. Modern medical advances have increased our chances of saving severed parts, but we must know some basic rules, Staunch the bleeding at the cut (do not use a tourniquet), and double bag the part in ice. Act quickly, and get help. Since you may suffer shock. A telephone in your shop should be a basic piece of safety equipment.

SHOW AND TELL

A really good showing this month!

Jerry Oberton showed several dinosaurs built of pine with a canvas hinge, allowing the 6 foot long Brontosaurus to move and flex. They are sold at the Museum of Natural History. He uses sanding sealer and Deft.

Chuck Maxwell showed the end panel of a child's bed, with spindle turnings.

Zatis Murphy had a cherry bandsaw box.

Don Sloan had several boxes made with half lap joints and pegs, two of spalted Zebrawood with false dovetails.

Richardson
Don Richards had an original design, soon to be published, for folding tables inside end tables.

Murray Gordon had photos of his large customized computer cabinet, made of birch trimmed in walnut. He has plans if interested.

Ed Caesar built a special clamp, a dust collection system for a Ryobi AP10 planer and a router jig.

Gayle Robinson had a clever jig to make a pencil holder that locks the pencils in place, trivets, a napkin holder, salt & pepper shakers and mesquite key chains and belt buckles.

Hebert Wilbourn had stylized religious wooden crosses, and a picture made with food coloring on wood.

OLD BUSINESS

Our Dues policy is \$12.00 annually, which pays for this newsletter. The \$12.00 is collected when you join and renewed in January each year. If you join in September or October it is \$6.00 for the rest of the year. If you join in November or December, the \$12.00 will apply to the following year.

CLINICS AND WORKSHOPS

Murray Gordon updated clinics, and he is conducting a clamp building workshop. He needs video tapes returned promptly so others can view them.

NEW BUSINESS

Our December dinner meeting is slated for Thursday Dec. 10, 1987 at the Rice Faculty Club, as in previous years. Mark your Calendars.

The Charity Show is scheduled for Friday and Saturday October 23 and 24. The club is accepting nominations for a charity and the members will vote at the August Meeting. Make-a-Wish, our charity for the past two years, and the YMCA have been nominated so far.

CHARITY SALE—COMMITTEES

CHAIRMAN----- SAM ZEISMAN-----723-4382
ADVERTISING----- BILL SALLANS-----465-0291
DEMONSTRATIONS-- BILL BEGGS -----820-8039
GROUPWORKSHOPS-- SHARON BUCKLEY-944-6739
SCHEDULES----- HERBERT WILBOURN-682-7335
SETUP&FACILITIES-- DON SLOAN-----688-8986
TELEPHONE COMM.--- JIMMIE HARP-----664-4906

Start bringing your items for the show and Jimmie Harp will store till the show.

All items need to be priced with the option for the club to change the price.

TIPS AND TECHNIQUES

Sanding Belts are problems in high humidity. Some club members keep them in the house until ready to use. High quality 3M brand belts have greater resistance to stretching than Craftsman.

The Popular Mechanic July issue has a good article on torsion box construction.

PRESIDENT'S CORNER

By Bob Soderblom CALL ME ANYTIME 466-1223

There is always so much enthusiasm among all members and visitors at our meeting and so many good ideas and suggestions to discuss. I don't want to miss out on your individual input. It's what makes our club a great one---the pooling of ideas and suggestions.

Any time you have ideas of interest to the entire club, by all means speak up during the New Business, Announcements, Questions or comments portions of our meetings.

Our meetings are always so informative and, with the mixture of humor along with the serious, makes for a perfect balance. However, I feel one of the most enjoyable and rewarding times of our gatherings is the too short time before and after the Business portion of the meetings. This is the time we really get to enjoy the fellowship and possibly the only time we have to get to know one another better, especially our Newer Members.

I just wish there was more than one of me so I could be in several places carrying on several conversations at the same time. Unfortunately, while I am getting set up before a meeting and while I am gathering up notes and equipment after a meeting, my available time to enjoy the many possibilities of enjoyable conversations is less than I would like to have.

Therefore, if you have difficulty catching me before or after a meeting please phone me, or any other Board Member, AT HOME so we can spend as much time as we need discussing your ideas or questions. The Board Members then can present your thoughts during our Board meetings held usually during the First Week following our monthly club meetings.

Also, if you are going to be in the neighborhood, near West Little York at Bingle in Northwest Houston, give me a call so I can give your directions to drop by the house.

SAFETY

By Zatis Murphy

How do you feel today? That's a question worth an answer if today you plan on working in your shop...especially if you plan to work with power tools. Make it a rule, never to use power tools (and some hand tools) if you're not feeling well, either physically or mentally. Aches and pains, an upset stomach or worry over whether the IRS is going to audit your tax return, can pull your attention away from where it should be...the project at hand. Pay attention to what you're doing and avoid distractions

Dress properly. Are the cuffs of long sleeves buttoned? Does the shirt or blouse you're wearing fit snugly? Loose or dangling pieces of clothing can be snatched in an instant and pulled along with you into moving machinery. Shop aprons or coats, coveralls and such are good apparel to reduce such hazards. Bare feet or sandals are not appropriate for the shop.

Make another rule to wear safety glasses, goggles or face shields when working in your shop. Enforce this rule with others who may be in your shop too! The National Safety Council has several excellent films on eye protection. One such film is narrated by a blind man who lost his eyesight while a visitor (not a worker!) in a machine shop. He walked up and looked over the shoulder of another man who was grinding a metal rod just as the grinding wheel disintegrated. The result? His eyes were destroyed beyond repair. Ironically, this man had a pair of safety glasses that probably would have saved his eyesight. They were in his hip pocket. The man doing the grinding had only minor injuries; he was wearing his safety glasses properly.

Protect your hearing too. The thunder accompanying lightning may seem deafening, but damage from this phenomenon is usually not from sound. (For the trivia buffs, a typical bolt of lightning has been estimated to contain more than a million volts.) Many machines generate noise in excess of 90 decibels when running. Short-term exposure to this level of noise can cause temporary hearing loss; repeated or long-term exposure can cause permanent loss. Protect your hearing with ear muffs or sponge ear plugs. I prefer the plugs because they're lightweight and inexpensive.

Protect yourself against other hazards you may encounter.

Avoid breathing wood dust with a dust mask. Wear rubber gloves when working with chemicals and solvents and ensure proper ventilation. Wear leather gloves when handling sharp, cumbersome items like bandsaw blades.

The cost of safety equipment is low. The investment is invaluable. Remember to plan your work, make sure you feel up to the job, dress right and use your safety equipment.

BUY AND SELL

Dremel jigsaw with sanding dish. \$50.00 Call Andy Blodgett---353-4819.

Books--Bob Soderblom---466-1223.

John Schwartz wants to buy a spindle sander and find parts for a Rockwell Belt Sander-520-5375.

Shopsmith Mark V with Bandsaw and many access. \$1200.00 Sharon Buckley--944-6739.

WELCOME NEW MEMBERS

Please add these names to your roster to keep it up to date.

Jim Davis-----7607 Athlone----- 591-1946

Louis Fernandez,Jr.--5607 Beatrice--697-9861

John Ganey-9509 Stockport--Spring-370-6178

Ron Geedman-----8337 Ariel-----772-6471

James McCullough--7810 Windswept--266-1290

John Schwartz----2213 Kingston----520-5375

L.C. Wheeler----2106 Latexo-----682-3258

JULY MEETING (NOTICE SPECIAL TIME OF MEETING)

WHEN: Saturday July 11th Starting 10:30 A.M.

WHERE: Wayne Boren Corp
4960 Cranswick, Houston, Tx. 77041

DIRECTIONS: Proceeding Northwest on Hempstead Hwy. PAST Clay Rd. Intersection to the Intersection of Hempstead,Bialock,Fairbanks N.Houston Rd. Turn LEFT across RR Tracks on Bialock 1 Block to Baythorne; RIGHT on Baythorne 1 Block to Cranswick; RIGHT on Cranswick to 4960 (Parking Lot on Right).

You have a treat in store when you see this most interesting manufacturing plant of Beautiful Superior Quality Wood Doors for Homes. They specialize in crooked molding Beautifully designed into their wood doors, with or without artistically designed quality leaded and etched glass inserts and panels.

Some "Scrap" molding will be available free. A better selection of excess cut-offs will be available at a reasonable cost.

Time and conditions permitting, there may be a short demonstration and/or explanation in operation of a shaper.

Enjoy a little extra sleep Saturday Morning if you wish but you won't want to miss this next meeting starting at 10:30 A.M. instead of our usual 9:00 A.M.

SEE YOU THERE

CLUB COMMITTEES

COMMITTEE:	CHAIRMAN:	PHONE
Advertising: (Newsletter)	Chuck Maxwell	469-0588
Clinics & Workshops	Murray Gordon Bill Hatherhall	729-0409 832-7073
Group Purchases	Rick Goodheart	434-8825
Libraries: (Books) (Video Tapes)	Kent Moore Murray Gordon	686-6006 729-0409
Name Tags:(Printing) (Name Tag Board)	Kurt Fortenbach Tommy Maldonado	550-2361 440-9865
Newsletter:(Editor) (Assoc. Editor) (Printing) (Address Labels) (Mailing) (Advertising)	Steve Procter Julia Smith John&Barbara Arnett Sharon Buckley Henry Reed Chuck Maxwell	728-1459 493-3997 877-8466 944-6739 465-8070 469-0588
Nominating & Programs	Board of Directors	
Refreshments	Mike Maxian Bill Beggs	669-1645 820-8039
Roster (Membership)	Sharon Buckley	944-6739
Safety	Zatis Murphy	469-3563

CHARITY SALE EVENT: SEE PREVIOUS LIST IN THIS NEWSLETTER



**REMEMBER MEETING
TIME WILL BE AT 10:30
A.M. NOT 9:00 THIS TIME
ONLY.**

**DON'T MISS THIS MEETING YOU'LL BE
SORRY**

W CHANDLER & Co

6005 Milwee # 709 Houston, Texas, 77092 (713) 683-8455

WOODWORKING MACHINERY, HANDTOOLS, BOOKS, FINISHING SUPPLIES.

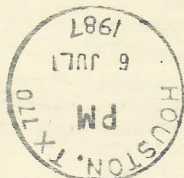
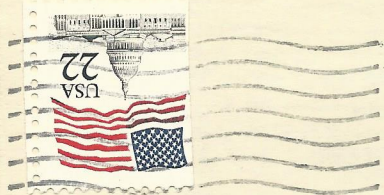
***** NEW PRODUCTS AT SPECIAL PRICES *****

VEGA SAW FENCE. If your work demands the professional touch this fence is a MUST for your table saw.

WEAVER CROWN RAIL AND PANEL JIGS. These jigs enable you to make crown raised panel doors accurately and SAFELY.

***** TOOLS ON SALE *****

RYOBI S500A PAD SANDER \$35.00 DML RADI-ALL SAW BLADE \$69.25 AND MUCH MORE



Woodworkers Club of Houston
P.O. Box 34481
Houston, TX 77234

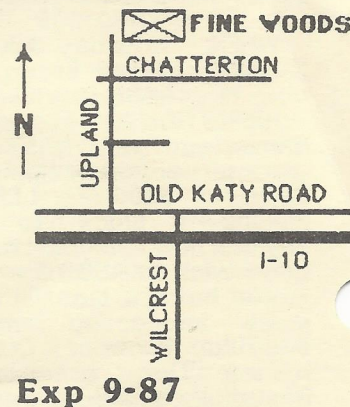
FINE WOODS OF HOUSTON

1818 UPLAND HOUSTON, TX 77043
OPEN Monday thru Friday 8:30 to 6:00
and Saturday 10:00 to 5:00
ph. 468-7032

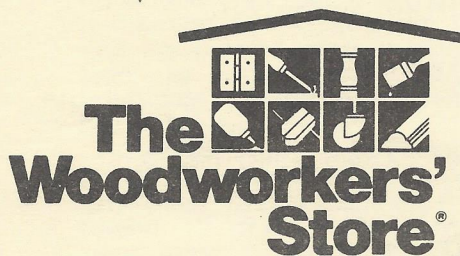
**SPECIAL
USED WOODWORKING MACHINES**

ASH-BASSWOOD-BIRCH-BUBINGA
CHERRY-CEDAR-COCOBOLO-IMBUYA
KOA-MAHOGANY-MAPLE-OAK-PADAUK
PURPLEHEART-REDWOOD-ROSEWOOD
TEAK-TULIPWOOD-WALNUT-WENGE
YELLOW POPLAR-ZEBRAWOOD-ZIRICOTE

VENEERS & PLYWOODS
FINISHES, BOOKS, & TOOLS
CUSTOM CUTTING & MILLING



THIS SPACE AVAILABLE FOR YOUR AD



21801 Industrial Boulevard, Rogers, Minnesota 55374 (612) 428-4101

Exp. 5/88