

The December Meeting - Program

Greg Gibbs from Hardwood Products presented the various specifications and grades in hardwood plywoods. The product quality has been changing and overall the quality is not what we had grown to expect in the past.

Basically there are 2 different core veneers in imported plywoods: birch and luan. Usually birch from Europe and luan from the far east. All imported plywoods are measured in millimeters and are slightly less than the corresponding English dimensions. Be careful in selecting screw lengths, hardware, etc. Baltic birch plywoods come in variations of 60 inches due to the presses being used by the Russians. Many times the sizes are slightly less since the sheets may be trimmed to remove edge flaws.

There are almost as many terms for plywood grades as there are distributors. However, there is an industry grading system that covers the technical grades for face and core. No matter the terms a distributor may use he should be able to give you the technical grade (A, B, C, D, or E for the veneers, etc.). 'Cabinet grade' usually means stainable face veneer with lower grade same species on the back. 'Marine grade' means no voids with better core material and Type 1 glue. The exact grade specifications are available in the Hardwood Plywood Reference. Call Greg at Hardwood Products for the address in Reston, Virginia.

Usually imported face veneers are about .02 mm to .04 mm while domestics are .05 mm to .06 mm. At these thicknesses it is not recommended to machine sand the surfaces. The US makers are changing to thinner face veneers to conserve our precious woods.

Lumber core plywoods are very different now and it is highly recommended to ask if it is domestic or imported. Imported quality is declining.

Fiberboard, more specifically medium density fiberboard (MDF), is being used as a core. Bassett is one of the big users of MDF in furniture. A 3/4 inch 4 x 8 sheet can weigh as much as 106 pounds, so get help in handling. Use large pitch screws like dry wall screws to prevent pull out. MedEx is made with water-proof glues but limited availability like MDL and MDF with no formaldehyde glue.

Bending plywood is available. It is made with veneers on the faces with a ploycore using interior glues (type 2). The face veneer grains are parallel and flex parallel to the grain. It crackles as it is bent. The typical use are those curved reception desks and covering interior structural beams.

If a panel has variable color stand it in the sun until balanced. Even out water staining by dampening entire panel and allowing it to dry. Some grain will be raised but light sanding should correct it.

Steve Proctor noted that Greg and others at Hardwood Products have been very helpful in selecting the least expensive product for the specific application. Orders can be faxed to HP for pricing, but be patient since it can take a day or two to complete.

The biggest recommendation from Greg was, "Go and look at the products you are going to buy and ask questions."

Woodworkers Club members get a 5% discount on contractor prices by informing HP at the time of ordering.

Annual Dinner and Show

The 1994 Annual Dinner and Show was held at the Rice University Faculty Club on December 9th. A total of 40+ members, spouses and guests attended.

Ten members brought a total of 12 different items for showing.

- Jimmie Harp - Oak End Chest with 5 drawers
- Bob Carter - Sculpted Rocking Horse
- John DeBender - Oak Table with octagonal top
- Bill Baker - Bandsawn Puzzle Blocks
- Bill Hochmuth - Rose inlay Music Box plays "The Rose"
- Lewis Vallette - Turned Vessel with 200+ segments and a small Turned Vessel
- Ervie Jenkins - two Turned Vessels in Spalted Hackberry
- Hubert Miller - Mesquite and Glass Jewelry Chest with 5 drawers and necklace with 1
- Joe Wainright - Maple and Bloodwood box in the Lyngate style.
- Walt Turpening - Maple Nested Boxes

New Items and Ideas

A new publication, Houston Renovator, discusses the renovation of area buildings with many local suppliers as advertisers. It is at most supermarkets.

Woodsmith Corporation, announces WoodNet — a new computer bulletin board service. At this time it contains the back issue indexes for *Woodsmith* and *ShopNotes* magazines and soon, *The Guide to Published Woodworking Plans and Techniques* by Art Gumbus. There are several planned forums and databases including a HelpLine where help on any woodworking problem is to be given within 24 hours.

Until April 1, 1995 the BBS will be free and afterwards the cost will be \$19.95/six months or \$29.95 per year. The terminal setting is 8-N-1 which is the usual default in most terminal software. Call (515) 245-WOOD. The system operator is Gordon Gaippe and is available by voice at (515) 282-7000.

January Meeting

When: January 14, 1995 9:00 AM
Where: Bayland Community Center
on Bissonnet at Hillcroft
Program: Jim Schmidt of 3M - a new adhesive and
other woodworking products.
Raffle: 3M is donating a \$100 gift certificate.

Quote for the Month: Excellence...Within Reach by Douglas Pagles

"There are some things you wouldn't change, even if you could. Things that can't be improved on, because they are just about as exquisite as anything gets. Things that appeal to our senses and sensibilities -- like a perfect moment, a piece of music, a look, a creation -- that we rely on to take us beyond standards. Things that soar above the level best.

These are the things we call "classics." They bring a quiet magnificence into our homes and our hearts. They often come to us from a time when people's visions are clearer, when they can see the way through to truths about how we could live, and what we would achieve, if we combined equal parts of wisdom, integrity, purpose, and love. Classics aren't always lofty and unattainable; most of them are easily within reach. And they teach of us that though we can't always add to the quantity of our daily lives, we can do wondrous things...about their quality."

Notes from the Editor

Hello", from your new newsletter editor.

I wish to send out a hardy "THANK YOU" to Sharon for the massive amounts of work she did last year wearing two hats for WwCH. During the year I offered to assist her with the newsletter. Then she tapped me on the shoulder to be editor. I have a tough act to follow.

A bit of background on me, I have been working in wood since about 1980 when I needed a new hobby (according to my wife). Frank Flinn, a professional woodworker near Pittsburgh, Pa., turned me on to making furniture and useful objects that 'felt good'. I have been trying to develop the feel for wood ever since. My preferred woods are walnut, hard maple, red oak, cherry and hondouras mahogany.

I am not new to editing a newsletter. While at Sohio/BP I coedited an electronic forum/newletter for the employees every week for almost 5 years.

I have a few ideas to add to what has gone before. At the first of the year like this I am sending out a request to the membership for little articles to be included in the newsletter. I will help edit and assure that you won't be embarrassed by typo errors.

I missed the January project topic. So everything will be in the Show and Tell segment of the meeting. I will get it right next month.

Hopefully, you will like what you see.

Vice President's Corner

As I sit here contemplating yet another new year, I am thinking about in what direction I would like to see our programs head. I am reminded that over the past year, Art Chester has brought us some great presentations. But were they enough? Did we need more "how-to"? Did we need more of the "nuts and bolts"? If I follow in Art's shoes in any manner, certainly want it to be in the area of organization and planning. He is a master!

Being a novice woodworker, I constantly want to know more. Being a manager of a couple of children's sports teams, I constantly remind my kids to practice the basics and continue to rely on them. Maybe we need to revisit the basics. Maybe we are beyond that. Maybe not... Some of us may take the basics for granted. I have noticed that most of the new members of the club are introducing themselves as hobbyists, as beginners, as "messing around with it in my spare time" kind of woodworkers. These people can use a good, solid foundation of the basics. Those of you who are accomplished woodworkers - and there are a number of you in this group - have probably forgotten more than some of us know now or may ever know.

I would like to involve more company representatives whose tools and products we use but I would like the presentations to be more of a "how-to" and a discussion of when to use one tool or blade or finish over another. Believe me, being a sales rep myself, no one knows more about their own products and those of their competition than these sales guys do. The programs already booked or being worked on are:

February - Porter Cable (tentative) - including the donation of a gift certificate.

March - Freud - different blade types and proper usage.

April - still trying to get a major author

We will continue the raffle that was started in 1994. It has been wonderfully successful and should be continued.

If you have any ideas or suggestions, please call me or see me at the meetings. For you on the information superhighway (or loitering at one of its rest stops) I am on CompuServe at address 75444,1764 or from the Internet at 75444.1764 @compuserve.com.

I look forward to bringing you as much knowledge as possible while making it joyful, entertaining and just plain fun.

Officers

President Jimmie Harp, 644-4906
Vice President Saul Harris, 341-5373
Secretary/Treasurer Lee Palfreyman, 497-7085

Directors

Andy Anderson Art Chester
Steve Proctor Don Richardson

Newsletter Editor - Walt Turpening, 879-5640



686-6176

FAX: 686-3217

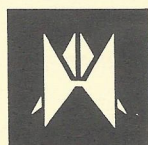
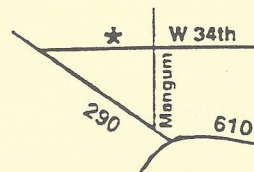
4910 West 34th St, Houston, Texas 77092

Hours: M-F 7:30-5:00 SAT 8:30-12:30

DOMESTIC & IMPORTED HARDWOODS

Ash, Aspen, Basswood, Birch, Aromatic Cedar, Cherry, Cypress, Lacewood, Mahogany, Maple, Oak, Padouk, Pecan, Poplar, Purpleheart, Redwood, Sycamore, Teak, Walnut and more.

- *Quality Domestic & Imported Plywood (Interior & Marine)
- *Edgebanding & Veneer
- *Butcher Block Tops
- *MDF & Melamine
- *Moulding
- *PERSONAL SERVICE
- *PROMPT DELIVERY
- *ON-SITE CUSTOM MILLING

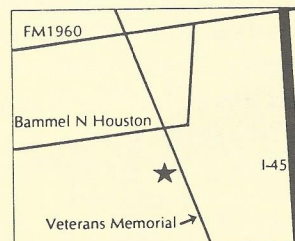


AUSTIN HARDWOODS

13001 Veterans Memorial Dr #408

- Rare Exotics - over 80 species in stock
- Turning Stock / Veneers / Dowels
- Flooring / Moldings / Plywoods
- Finishing Supplies
- Millwork & Woodwork available including Custom Profiles
- Custom Knife Grinding Services
- Project Hardware

2/95



440-0764



WOODCRAFT®

Woodworking Tools • Books • Supplies
Since 1928

Woodcraft offers over 4,500 of the finest woodworking tools, books, supplies, cabinetry hardware, and wood available in the world today! We are committed to woodworkers of every skill level, from beginners to professionals, and every discipline, from carving to woodturning and fine cabinetry! Ask about our classes and demos next time you're in our neighborhood! We are an authorized dealer for Shopsmith, Delta, Porter Cable, Bosch, Record Marples and many more favorite, top quality brands!



Northbrook Shopping Center • 5360 West 34th Street • Houston, TX 77092 • 713-681-5200

4/95

The Lowest Prices On JET Machinery Every Day!

Tired of fighting with your old Table Saw Fence??

Fit it with the unique 30" JET FENCE! **\$179.99**

We are also now a Full-Service Biesemeyer Dealer

50" to the right T-Square® Industrial Fence: **\$359.95**

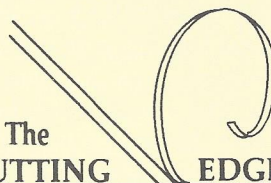
50" to the right T-Square® HomeShop Fence: **\$289.95**

40" to the right T-Square® HomeShop Fence: **\$269.95**

9 ft. Miter Saw Fence with Outside Miterstop: **\$255.95**

Just Arrived: The New JET JWTS-10JF Table Saw \$559.99!

7123 SouthWest Fwy, Just North of Bellaire Blvd. (713) 981-9228



The **CUTTING** **EDGE, Inc.**
Woodworker's Tool & Supply

Mon. - Fri. 9 am to 6 pm

Sat. 10 am to 5 pm

Sun. Noon to 4 pm



JAN 6 1995

NOV 20 9 11 AM '94

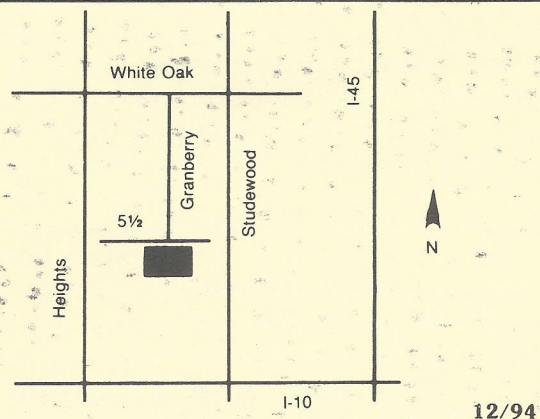
Woodworkers Club of Houston
P. O. Box 34481
Houston, TX 77234

HARDWOOD LUMBER CO.

700 E. 51/2 St. (In The Heights)
Houston, Texas 77007
(713) 862-6628
Hours: M-F 7:30-5:00, Sat. 8:30-1:30

We stock over 65 species of lumber including
hard to find exotics!

*Also: Plywood, Veneer, Moulding, Formica,
Custom Milling, Woodworking Tools, Books, etc.*



Send Today for the Most Complete Catalog Selection of Woodworking Supplies

Please Enclose \$1.00 (3rd class) or \$2.00 (1st class)

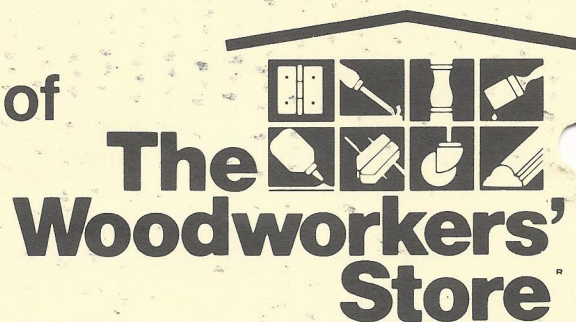
Name _____

Address _____

City _____ State _____ Zip _____

Orders Shipped Within 48 Hours

7/95



21801 Industrial Blvd., Rogers, MN 55374