

WOODWORKERS CLUB OF HOUSTON

WWCH.ORG

NEWSLETTER

VOLUME 17, NUMBER 12, DECEMBER 2001



Left - Tom Matkin receives a forstner bit set from John McInnis of the Bayfield Corp. as a door prize at the November meeting.

Grizzly Bench Top Drill Press

and more!

We also be having a raffle with more items than usual.

Future Programs

The club is currently seeking members or anyone else to present future programs. The board will consider any suggestions, but the following program subjects are needed:

Intarsia

Using either the Joint-tech or Incra Jigs

Making Bandsaw Boxes

Election

The election for new club officers and board members will be held at the December meeting. The current nominations are as follows:

Pres. - Ken Kooser

Vice Pres. - Art Chester

Sect/Treas - Joan Logins

Board - Jack Hutchison

Board - Blake Present

Additional nominations will be accepted prior to the election.

David Reiss and Brian Honey will serve as board members for the year 2002.

.Auction

We will be having an auction at the December meeting which will include the following:

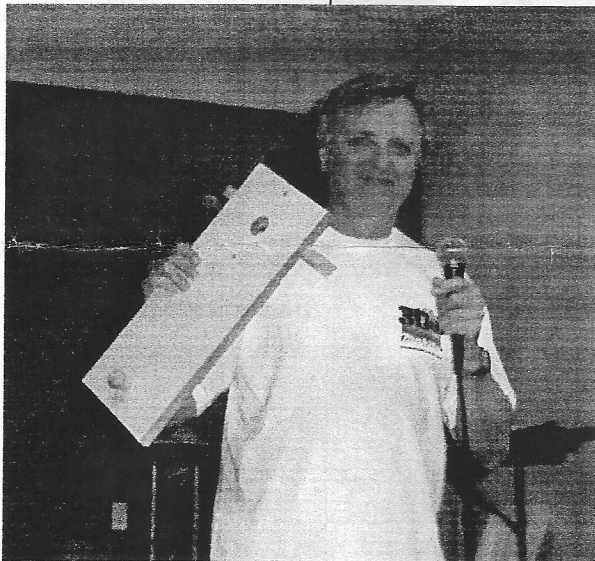
Makita Planer
Ridgid Shop Vac

Makita Jig Saw
Delta Scrollsaw

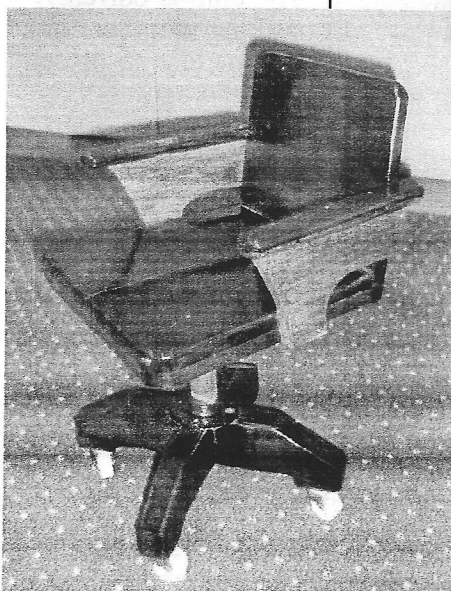
Makita Belt Sander
Milwaukee Circular Saw



Above - Jack Hutchison giving his presentation on veneering.



Left - Jack with an edge trimming jig that he made.



Left - Here is a child's swivel chair made by Chuck Maxwell about 20 years ago. It shows a little wear, but still together.

A Tip for Scrollers by Lee Knekow

When cutting on the line of a pattern, such as the veins of leaves, do you have trouble sometimes seeing where the thin black 2/0 blade is in contact with the pattern? Even though I have a magnifier and a light attached to my scroll saw it can be frustrating when I am cutting a complex pattern and want to cut accurate

Membership Changes

Please forward any changes in your membership info to:

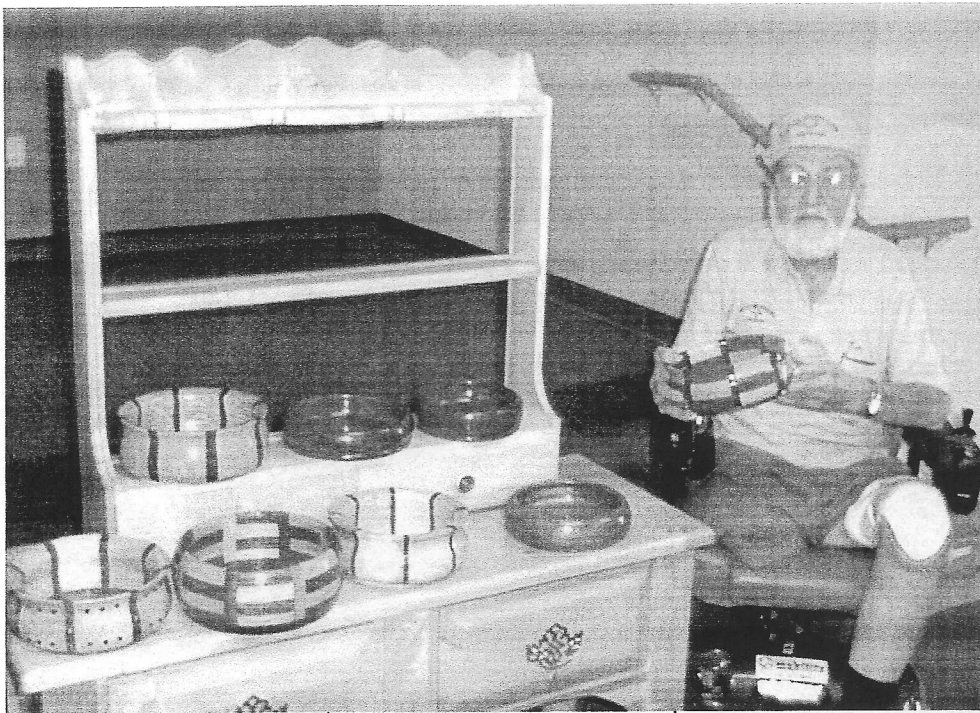
Richard Hash
713-981-0568
richard.hash
@openspirit.com

Can You See This?

lines. I solved this problem by having my local copy shop print the patterns in color (medium shades of green, blue and red work best for me).

The black lines of the pattern and the black lines of a cut are sometimes hard to differentiate and I really have to look hard to see that I didn't miss cutting some small line. With a colored pattern uncut lines stand out like a fly in a glass of milk.

The price of having a pattern printed in color is higher and I don't use it all of the time but, considering the time, labor and cost of materials that go into some projects, the higher cost of a color pattern is well worth it to me.



**LAETSCH'S
SERVICE
CENTER**

713-462-2894

**"Servicing
Shopsmith
Headstocks"**

Not affiliated with
Shopsmith.

and some of his re-
cent projects. The
sideboard and wall
shelf are made with
bowling alley maple.

Here are three pho-
tos of Ken Wallis



Featuring the Finest Tools The World Has To Offer

English Hand Tools By Record, Stanley, Henry Taylor, & Robt. Sorby.
Japanese Saws, Chisels & Stones By Gyokucho, Matsumura, and King.
Biesemeyer, Makita, Bosch, Starrett, Irwin, Olson, Jorgensen,
Magna-Set, Freeborn, Lie-Nielsen, & Incra: All Made In The USA.
Canadian Chucks and Hand Tools By OneWay & Veritas.
European Tools by Freud, Tormek, Sjöberg, Stern, & Footprint.

PLUS: The Best Prices On JET Machinery Every Day!

We are an Authorized JET Service Center.

7123 SouthWest Fwy, Just North of Bellaire Blvd. (713) 981-9228

**The
CUTTING EDGE, Inc.**
A Woodworker's Tool & Supply

Mon. - Fri. 9 am to 6 pm
Sat. 10 am to 5 pm
Sun. Noon to 4 pm



713-686-6176

FAX: 713-686-3217

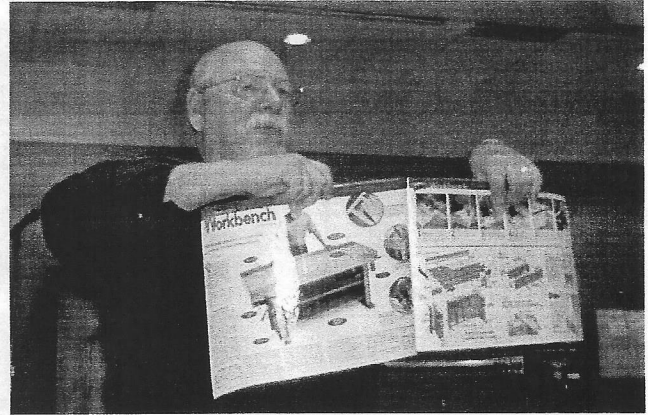
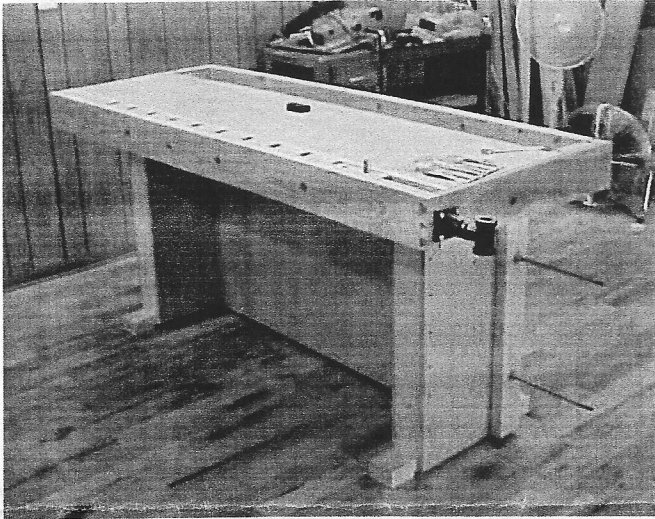
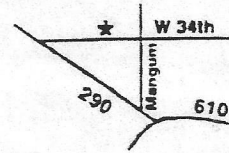
4910 West 34th St, Houston, Texas 77092

Hours: M-F 7:30-5:00 SAT 8:30-12:00

DOMESTIC & IMPORTED HARDWOODS

Ash, Aspen, Basswood, Birch, Aromatic Cedar, Cherry, Cypress, Lacewood, Mahogany, Maple, Oak, Padouk, Pecan, Poplar, Purpleheart, Redwood, Sycamore, Teak, Walnut and more.

- *Quality Domestic & Imported Plywood (Interior & Marine)
- *Edgebanding & Veneer
- *Butcher Block Tops
- *MDF & Melamine
- *Moulding
- *PERSONAL SERVICE
- *PROMPT DELIVERY
- *ON-SITE CUSTOM MILLING

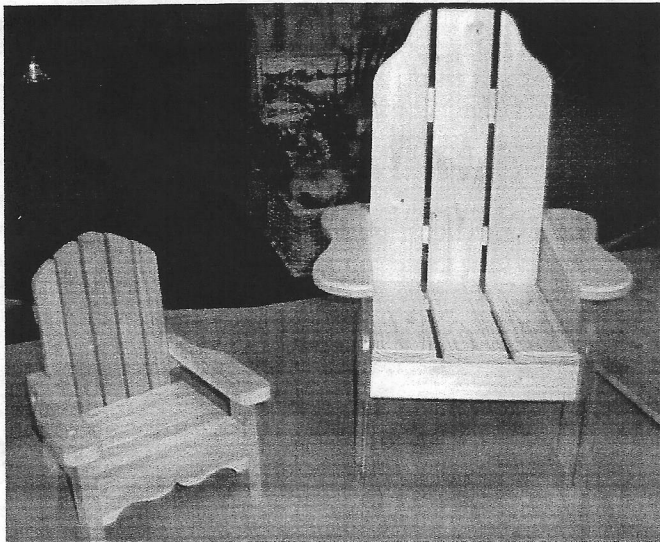


Above Left - Ken Kooser's almost completed work bench is his new shop.

December Program

The program for December will be presented by Louis Schamble of Stanley Tools. He will be demonstrating how to repair nail guns and will be discussing which nails are best for different applications.

Above Right - Ken showing us the plans and inspiration for his work bench.



Left - A child's chair and a chair for a teddy bear made by Joe Edelen. Joe made the larger chair for his grandchild.

**Looking for great quality Power & Hand Tools?
Pasadena Industrial Supply**



222 West Pasadena Freeway, Pasadena Texas 77506 472-5588

**BRANDLE'S
SAWMILL**

**ROUGH SAWN
PINE AND
HARDWOODS**

**CUSTOM SAWING
AVAILABLE**

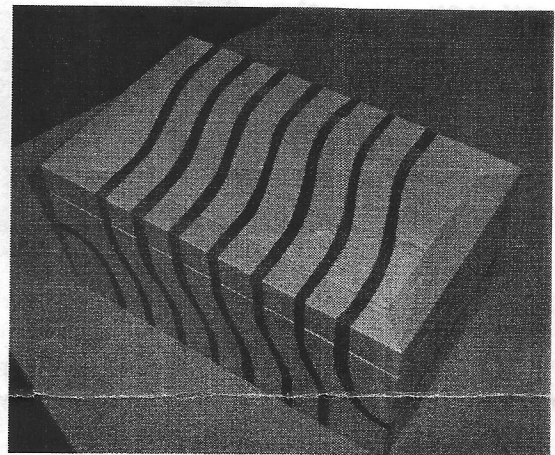
**LOGS UP TO 36"
DIA X 24'**

**13868
LAKELAND DRIVE
MONTGOMERY,
TEXAS 77356**

936-597-4575

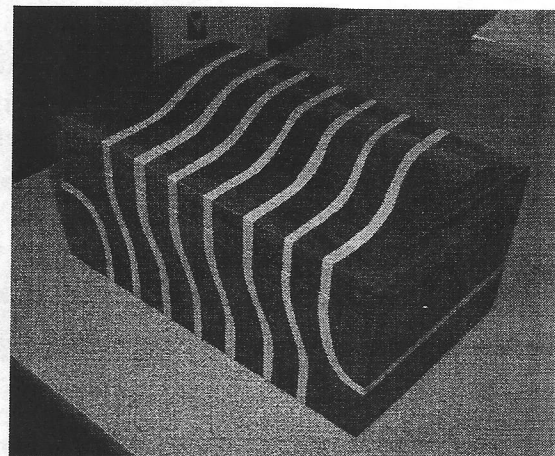
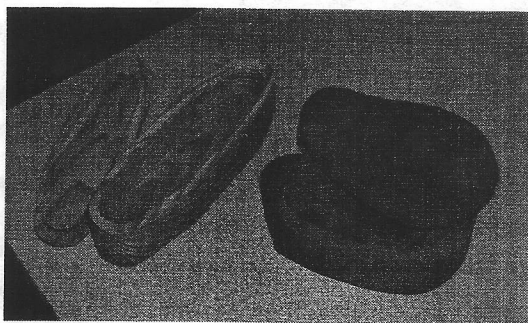
REMINDER!!

THE 2002 WWCH
DIRECTORY WILL BE
PRINTED SOON. MAKE
SURE YOUR NAME IS IN IT
BY PAYING YOUR DUES AT
THE NEXT MEETING!!!



Two interchangeable bandsawn boxes
(above and below), created by Lon
Kelley. They are made of maple and
walnut.

Below: Two more items made by Lon
Kelley. These are made out of wood that
he picked up while he was beachcombing.



Featuring the Finest Tools The World Has To Offer

English Hand Tools By Record, Stanley, Henry Taylor, & Robt. Sorby.
Japanese Saws, Chisels & Stones By Gyokucho, Matsumura, and King.
Biesemeyer, Makita, Bosch, Starrett, Irwin, Olson, Jorgensen,
Magna-Set, Freeborn, Lie-Nielsen, & Inca: All Made In The USA.
Canadian Chucks and Hand Tools By OneWay & Veritas.
European Tools by Freud, Tormek, Sjöberg, Stern, & Footprint.

PLUS: The Best Prices On JET Machinery Every Day!

We are an Authorized JET Service Center.

7123 SouthWest Fwy, Just North of Bellaire Blvd. (713) 981-9228



The
CUTTING EDGE, Inc.
A Woodworker's Tool & Supply

Mon. - Fri. 9 am to 6 pm

Sat. 10 am to 5 pm

Sun. Noon to 4 pm

SHOW AND TELL AWARD PROPOSAL

BY JACK HUTCHISON

Do you hate to compete for fear of losing? If so, have you ever wondered why competitive events are so popular? It doesn't matter whether it's a spelling bee, Olympic sports, craft skills, or spitting contest. People voluntarily compete for the thrill of competition, and the fun of winning; the fear of losing is held by a minority. We love competition. It is the American way.

I personally consider the Show & Tell portion of the monthly Club meeting to be the most enjoyable as a wide variety of woodworking projects are brought in reflecting various levels of skill from beginner up to professional. The colorful presentations describing the projects are often informative, and fun, and provide recognition from peers. Viewing the work of others inspires greater effort to do one's best, and helpful tips from participants serve to enhance member's woodworking skills and techniques. After all, isn't this the Club is all about?

Recent participation in the Show & Tell program has been very good, but that has not always been the case. Furthermore, it seems that the same folks appear month after month. We don't want to discourage this effort, as it is often considerable, particularly when large and heavy pieces are brought in with risk of damage. On the contrary, we want to encourage it even more, with wider participation from the Club members. I believe a competition with a small award and publication in the Newsletter would encourage just that.

In order to stimulate broader participation in the Show & Tell program the Directors of the Woodwork's Club have been discussing for a couple of years the possibility of granting cash or gift certificate awards to members who participate in the Show & Tell portion of the monthly program in order to stimulate participation. In spite of the merits of making awards, nothing ever came of these discussions as issues were raised regarding administration, fairness, and cost.

I have addressed each of these issues with what I believe to be acceptable solutions as follows:

Administration

Three levels of competition would be open for participation, *i. e.* Novice, Journeyman, and Master. In order to level the playing field, all participants would initially be classified as Novice. Once a

(continued on pg. 8)

At Your Service

President:
David Reiss
~~609-925-0054~~

Vice-president:
Ricky Givens
~~281-856-9400~~

Secretary/Treasurer:
Brian Honey
~~713-329-8100~~

Directors:
Todd Burch
~~713-973-2718~~

Mike Turner
~~81-376-1311~~

Roy Gilbert
~~801-499-6157~~

Ken Kooser
~~936-890-4000~~

Book Librarian:
John Gay

Video Librarian:
Michael Kelly
~~281-357-0111~~

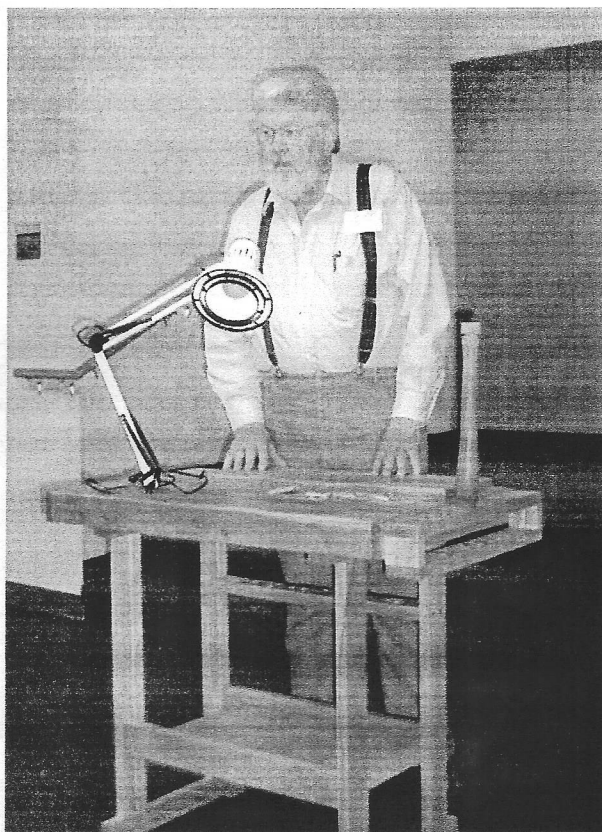
Article Search:
Saul Harris
~~281-341-5373~~

Name Tags:
Joe Edelen
~~281-437-5937~~

Coffee:
Loretta Buckley
&
Bill Hochmuth

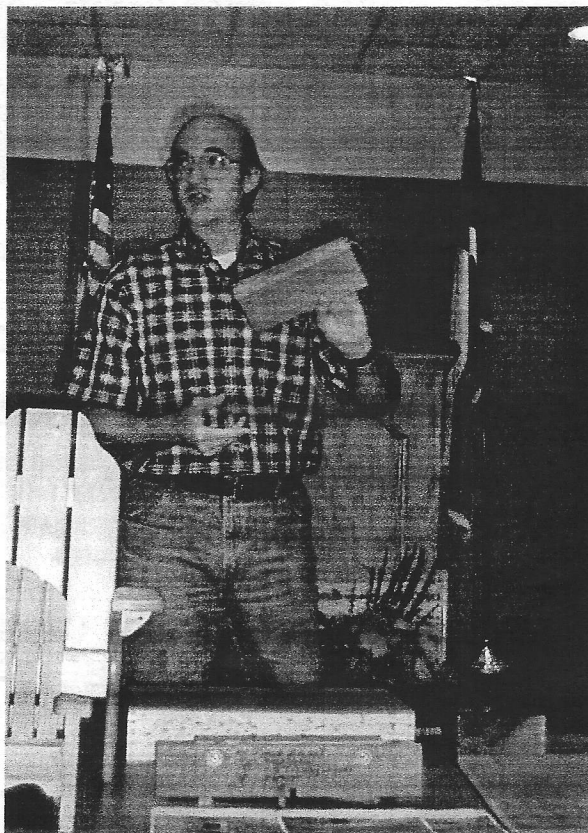
Web Master:
Gary Rowen
~~281-465-2013~~
cgrowen@pdq.net

Newsletter Editor:
David Reiss
~~609-925-0054~~
ftty@wt.net



Above - Boyce Gahagan and his work bench with tool racks.

Below- Bob Mueller talking about gluing end grain to end grain.



BRANDLE'S SAWMILL

**ROUGH SAWN
PINE AND
HARDWOODS**

**CUSTOM SAWING
AVAILABLE**

**LOGS UP TO 36"
DIA X 24'**

**13868
LAKELAND DRIVE
MONTGOMERY,
TEXAS 77356**

936-597-4575

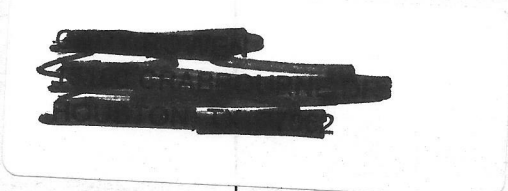
Woodworking

Magazines Wanted

Recycle your wood-working magazines and do a charitable deed by bringing in your old magazines which will be delivered to M.D. Anderson Cancer Center and distributed to the many waiting rooms at the hospital.

Jim Clark, a recent patient of the hospital and club member will be accepting the donations at the club meetings and will distribute them.

Woodworkers Club
of Houston
12206 Young Circle
Santa Fe, Texas 77510



77062+2622 15



**Calendar of Events
for: December**

**8th - Meeting at the
Bayland Center -
9:00 am**

Quick Tips

Many woodworkers use a keyhole slot routed in the back of picture frames to hang them. But if the slot is not perfectly centered the frame will hang crooked. Try routing

the slot horizontally to allow a small amount of adjustment.

To keep power tool cords rolled up, try using a ponytail holder. The ones with balls on the ends work best.

These quick tips were

provided by member
Loretta Kacel



THREE HOUSTON LOCATIONS:

440 HWY. 6 SOUTH
HOUSTON
281-496-0811

5900 N. FRWY.
HOUSTON
713-697-9909

120 GULE FRWY.
LEAGUE CITY
281-332-9201

**DEWALT ~ PORTER CABLE ~ DELTA
JET ~ MILWAUKEE ~ MAKITA
HITACHI ~ BOSCH ~ BESSEY ~ RYOBI
"PROUD SUPPORTER OF THE WWCH"**

