

# Woodworkers Club

## OF HOUSTON

VOL. 6, NO. 8

AUGUST, 1990

### Officers

Don Richardson - President 661-1365  
Ted King - Vice President 351-6808  
Claude Emory - Sec./Treasurer 861-3495  
Sharon Buckley - Newsletter Editor 944-6739

### Board of Directors

Bill Baker - 667-8381  
Bob Gallant - 376-0276  
Bill Hochmuth - 774-1733  
Bill Sallans - 465-0291

### JULY MEETING

The program for the July meeting was on the use of jigs, presented by our own Chuck Maxwell, Mr. Jigs. Chuck's description of jigs is a gadget to make work more pleasant. Chuck said this was the first time he ever presented jigs-a-cappella, no way to actually demonstrate with tools on how these jigs perform.

Some might think that Chuck brought ever jig in his shop but if you have ever been to his shop, you'll know these were but just a few.

Chuck uses many different types of jigs, from the very elaborate to the very simple.

The following is some of the jigs that Chuck shared with us:

Miter cut jig, a mortise jig, poor boy dust collection junction box, dust collection blast gate, a very simple but usefull plywood dolly, for the shopsmith a jig to make spindles on the lathe, panel cut off jigs from Woodsmith #18 and #25, tempered masonite callipers for bowl turning, mini-bench hook, adjustable bench hook for large work, tru-up circles on disc sander, center jig, strips of wood with sandpaper glued on, sanding blocks copied from Leichtung, Leather strop glued to wood strip, one rough side for the use of oil and one side with smooth leather for the use of rouge, a counterbalance jig, large compass made from a three foot yard stick and trammel points, raised panel jig with adjustable sides, raised panel jig with hold down for panels, circle cutting jig for router, jig for turning spindles on the table saw, poor boy center finder, deluxe raised panel and tenon jig, push blank for use with the router.

Chuck also uses a large cut of jig on his table saw. Once you have used a table saw cut off jig you will wonder how you ever got along without one. This jig makes the table saw much more accurate and safer to use.

Chuck creates his own and redesigns or improves many of the jigs that you will find in the woodworking publications.

Chuck's presentation was informative and very helpful.

Thank you Chuck for a great program, it was enjoyed by all.

### CHARITY SHOW NOMINATIONS

The only nominated Charity for our Annual Charity show was the MAKE-A-WISH FOUNDATION. Since this was the only nomination if was suggested that the charity be chosen by acclamation. The vote was almost unanimous, only one desenting vote, not bad. This years Charity will be the Make-a-Wish foundation.

### CHARITY SHOW

Sam Zeissman is asking any member who would like to work at the show to sign up with Bill Baker--also if you have signed up and cannot work, please tell Bill Baker so someone else can fill your slot. We use the word work but its really fun and you'll get to know the members better.

Bill Beggs and Chuck Maxwell are in charge of demonstrations at the show but if you would like to participate in the demonstrations or if you have any ideas, talk to them as they could use your help.

Bill Hochmuth is in charge of the merchandise, we need lots and lots of items to sell but would like if at all possible for the members to bring there items closer to the sale, because of storage limitations. If you have something that you cannot store he will find storage for it---so no excuses. If you can help in hauling merchandise on Friday morning of the show besure to contact Bill, he can use your help.

### FIELD TRIPS

Ted King is organizing a Field Trip in September, tentative date the 15th at 10:00 to Waller, Tex. to see a maker of Reproductions of

full size antique airplanes, some are in the Smithsonian. Waller is 45 mins to an hour from Houston. The exact date and a map will appear in next month's newsletter.

#### WORKSHOPS AND SEMINARS

Chip Carving by Joan Brueggeman will be held following the August meeting, don't know if there is any space left but you might contact Joan or Stuart Murphy for info.

#### SAFETY-----HAND SAFETY

By Murray Gordon

How to protect your hands from cuts, splinters or serious damage from power tools.

Always keep cutting edges sharp, as a sharp tool is safer than a dull tool.

When handling or stacking lumber wear leather gloves, the gloves will save your hands from cuts and splinters and give you a better grip.

Always use the safety guards that come with the machine.

Use push sticks and push blocks, these can be shop made or purchased in a kit. Shopsmith sells one that includes hold downs, push sticks, fingerboard, etc. and safety glasses.

Unplug tools before making any adjustments or changing bits or blades.

Never wear rings, watches or loose clothing, as any of these can catch in a tool and cause serious injury.

To remind yourself where not to place your hand or fingers, paint red strips on your tools where the path of the blades pass.

Red stripes and safety devices are good just not fool proof, always keep your wits about you. Use good safety procedures and good habits.

#### TREASURER'S REPORT

All bills paid and a balance of \$2511.00 in the bank.

#### PROBLEMS AND SOLUTIONS

Question? Are the sanding frames sold for hand belt sanders worth the money. The answer was yes, they help to eliminate gouging.

A member has a craftsman belt sander that eats sanding belts. Another member with the same problem said he broke the sander down cleaned it thoroughly, readjusted it and now it works fine.

#### HYDROCOTE FINISHES

Chuck Maxwell asked us to publish Hydrocote's phone number 1-800-828-6327.

#### SHOW AND TELL

Steve Procter had photos of 7' foot tall by 4' wide and 2' deep Armoire which he uses for an entertainment center and chest of drawers. The top pediment is removable to allow the Armoire to fit through doors.

Don Richardson had 2 wooden brief cases made from Tuara (the spelling is incorrect, I

can't remember), Don is donating these cases to the show.

Bill Beggs had a book easel resawed from Rosewood, and finished in Watco.

Bill Hochmuth made a Taboured Compact Disc cabinet out of Birch and Walnut. Finished in Watco. Plans from Woodsmith.

Don Sloan made a shaker stool, grasshopper and pull toys, also donated to the Charity sale.

Dan Shaklovitz had Rocking chairs made from Tuara (same wood as Don still misspelled--doesn't any one use Oak?) One finished in Natural and one stained Bartley's finish.

#### GROUP PURCHASES

It was suggested that we try as we have in the past to purchase items in bulk for a better price. The officers are looking for a member who would be interested in being a chairman or co-chairman of group purchases. If this might be of interest talk to Don.

Also if you have any suggestions or a want list, get them ready and we'll see what we can do.

#### OFFICERS FOR 1991

It seems a little early but time does fly. We will not nominate till the October meeting and we will vote at the November meeting, but we thought that you might start thinking about it. The Board started making up a tentative list of suggestions, but we would like some input from the members, maybe you would like to serve or you have a good suggestion as to who you would like as an officer or a board member. The positions available are President, Vice-President, Sec./Treasurer and a Board of directors at large. All the current officers will serve on the board to allow for good continuity and assistance to the new officers.

This is your club, the officers always want your input. The officers steer the boat but the members man the oars and propel the club. No officer wants the members to feel left out.

#### NEW ADVERTISER

We would like to introduce a new advertiser and a new Hardwood business to our club, Houston Hardwoods at 5117 April Lane Phone 686-6176. See their ad this issue for further information on location, hours of business and services they provide. Welcome to our club.

#### AUGUST MEETING

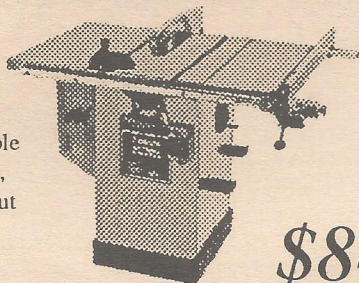
WHEN: AUGUST 11, 1990 9:00 A.M.

WHERE: BAYLAND COMMUNITY CENTER  
ON BISSONNET AT HILLCROFT

PROGRAM: The art of small boxes by Don Sloan. Don's workmanship is excellent, very precise and clean. He also has a very neat (neat as in clean) and orderly shop--something that most of us lack.

If you have been reading your newsletter, we originally had Royce Bomar to do a program on Antique tools but we have been in the hospital and is unable to attend.

# Pasadena Industrial Supply



Power Tool & Accessory  
Headquarters for;  
Delta Machinery, Porter-Cable  
Milwaukee, Hitachi, Bosch,  
Makita, Skil, Saftey-Speedcut  
& More!

## New 10" Tilting Arbour Saw

- 0 & 45 adjustable from table top • 2 hp 230 volt TEFC motor
- Miter gauge & rip fence storage • Motor cover included
- Auto overload protection with push button switch
- T slotted table provides support for miter gauge beyond table edge

**\$849** Delta# 36-755 **DELTA**

222 West Pasadena Freeway, Pasadena Texas 77536 472-5588

## Hardwood Lumber Co. Lawndale Division Imported and Domestic

Quality  
Hardwoods - Softwoods - Plywoods  
Mouldings & Squares

A COMPLETE SELECTION OF FINISHING SUPPLIES.

Marine Plywood  
Parana Pine  
Teak

Honduran Mahogany  
Exotic Hardwoods  
Domestic Hardwoods  
WALNUT - BIRCH - ASH - CHERRY  
CYPRESS - RED AND WHITE OAK  
AND OTHERS

MON. - FRI. 7:30 TO 4:30

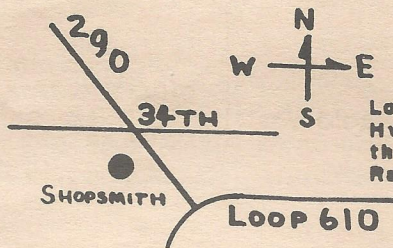
SAT. 8:00 TO 1:00

5401 Lawndale  
(713) 921-6131

Exp. 12/90

## Your Complete Woodworking Center Check Out Our Hardwoods, Our Prices Are Low

Hours:  
Monday to Friday:  
10:00 a.m. to 8:00 p.m.  
Saturday  
9:00 a.m. to 5:00 p.m.

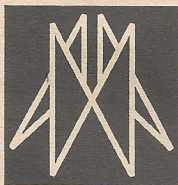


**Shopsmith Inc.**

Located at 34th St. &  
Hwy. 290 to Austin on  
the West side in the  
Randalls Strip Center.

Northway Shopping Center  
10965A Northwest Frwy.  
Houston, TX 77092  
Phone: (713) 681-5200

Exp. 1/91



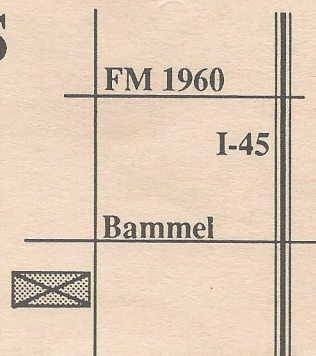
## AUSTIN HARDWOODS

13001 VETERANS MEMORIAL DR.  
HOUSTON, TEXAS 77014

**440-0764**

We stock over 80 species of lumber including rare exotics and turning stock. Plywood, Veneer, Moulding, Flooring, Tools, Millwork, Paneling Etc. also available

Exp. 8/89

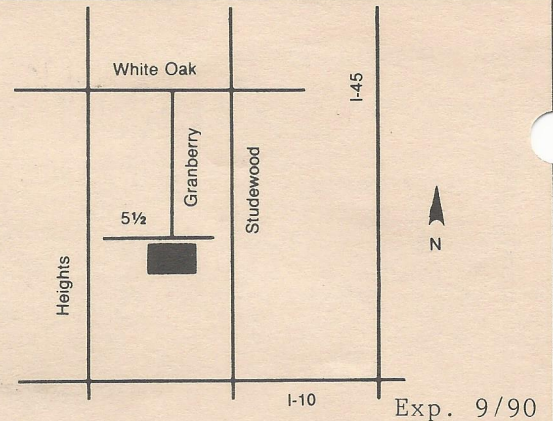


# HARDWOOD LUMBER CO.

700 E. 51/2 St. (In The Heights)  
Houston, Texas 77007  
(713) 862-6628  
Hours: M-F 7:30-5:00, Sat. 8:30-1:30

We stock over 65 species of lumber including  
hard to find exotics!

**Also:** Plywood, Veneer, Moulding, Formica,  
Custom Milling, Woodworking Tools, Books, etc.



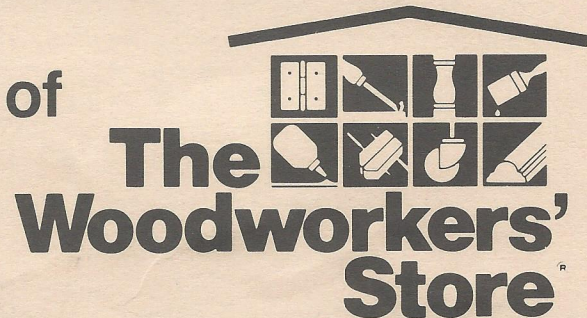
## Send Today for the Most Complete Catalog Selection of Woodworking Supplies

Please Enclose \$1.00 (3rd class) or \$2.00 (1st class)

Name \_\_\_\_\_  
Address \_\_\_\_\_  
City \_\_\_\_\_ State \_\_\_\_\_ Zip \_\_\_\_\_

*Orders Shipped Within 48 Hours*

Exp. 1/91



21801 Industrial Blvd., Rogers, MN 55374

PRINTED BY SPEEDY PRINTING SERVICE OF TEXAS 3727 W. ALABAMA, HOUSTON, TX. 77027 (713) 877-8466



5117 April Lane, Houston, Texas 77092

Hours: M-F 7:30-5:00 SAT 8:30-12:30

(713) 686-6176 Phone

(713) 686-3217 Fax

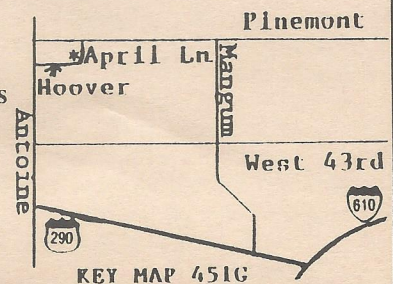
### DOMESTIC & IMPORTED HARDWOODS

Ash, Basswood, Birch, Cherry, Mahogany, Maple, Red Oak, White Oak,  
Poplar, Walnut Etc.

High Quality Domestic & Imported  
Plywoods, Softwoods, Hardwood Veneer  
Edgebanding & Hardwood Pliable Veneers  
*Excellent Service & Competitive Prices!*

ON SITE CUSTOM MILLING  
TO YOUR SPECIFICATIONS,  
S2S, S2SIE, S4S  
(No order too large or small)

Expires 8/91



Woodworkers Club of Houston  
P.O. Box 34481  
Houston, Tx 77234

