

Woodworkers Club of Houston

April 2004 • Volume 20, No. 4 • www.wwch.org

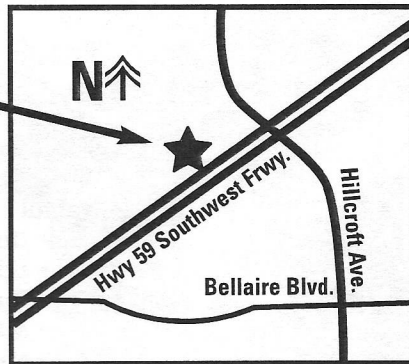
Bayland Center to be closed Easter weekend—Club will meet at SW Hilton.

After learning that our usual meeting place will be closed on April 10 arrangements have been made by the Board of Directors for a substitute location. Our meeting will be held at the usual time at the Southwest Hilton on the Southwest Freeway (map below). The program this month will be by Max Quenon manager of the local Rockler Store. Should be good!



Hilton Houston Southwest
6780 Southwest Freeway
Houston, TX 77074
Tel: 713-977-7911

Meeting begins at 9:00



Field Trip April 17

(rain date April 24)

Texas Kiln Products

The Club has made arrangements to visit Texas Kiln Products. Although their market is large commercial orders the Club is encouraged to bring their trucks, trailers or wagons to stock up. Their speciality is mesquite. They also have pecan, cedar, and many other varieties. Also burls, burl slices and veneers are available. Sign up for the trip at the Club meeting or call Buddy Grant at 713.661.9554. Texas Kiln Products is on Highway 71 six miles past the Colorado River in Bastrop. Car pools will be organized at the Club meeting at the Hilton.

The Program this month will be a presentation from Max Quenon manager of the new Rockler store.



Creative Woodworking

by John Gay

The dictionary defines creativity as "characterized by originality and expressiveness: imaginative." Creativity is a huge tent—there is so much more to doing something unique than the dictionary describes. You can see this each and every month with the Show and Tell. So where does the inspiration for all these finely crafted pieces that we see each month come from?

There are many sources. You can see some plans for a project, maybe a photo of a unique piece of work, perhaps it can be something that you need. Perhaps someone will show you a picture of something that they want you to build. Great sources of inspiration, ideas and dreams are all over the place. We have a large selection of inspirational gallery books in our library. Finding something is the easy part. The hard part is taking an idea and turning it into a completed object. So let's say that you have a wonderful picture of something that you feel will make a great addition. Where do you start?

Sometimes when you make something from a photo you need to rely on what feels right, instead of

hard, known dimensions. How do you start? The first thing that I do is to determine a unit of measurement. I am not thinking in feet and inches, or metric or any other solid way to measure, only in units. So try to find something that you can relate to and use as a reference. Trying to come up with exact dimensions at this point would only lead to complications down the line. The unit of measurement that I found for this project is the width of the drawer pulls. With this unit, I can draw a grid on the project. Thus begins the measurements.

After drawing a grid over the project, I can assign a value to the unit of measurement. In this case, the drawer pulls happen to be 3" long. Then the grid is made of 3" x 3" squares. So with a solid grid, I can now proceed with all of the little details. All of the elements eventually fall into place.

Remember, this is your project now and make it for you first. There are many things that you can do to make this your one-of-a-kind piece. We have several books in the club library about furniture, sizing and standards for everyday use. Check one out.



Specializing in quality hardwoods, plywoods and moulding since 1990

Select your own wood from our supply of Birch, Mahogany, Maple, Padouk, Teak, Walnut and much more.

- Domestic and Imported Plywood
- Edgebanding and Veneer
- Butcher Block Tops
- MDF and Melamine
- Moulding

Houston Hardwoods has built a reputation for personal service, prompt delivery and on-site custom milling. Come by and meet our friendly staff or visit us on the web at www.houstonhardwoods.com



4910 West 34th St, Houston, TX 77092
 Tel: 713. 686. 6176 • Fax: 713. 686. 3217
 M-F: 7:30 - 5:00, Sat: 8:30 - 12:00

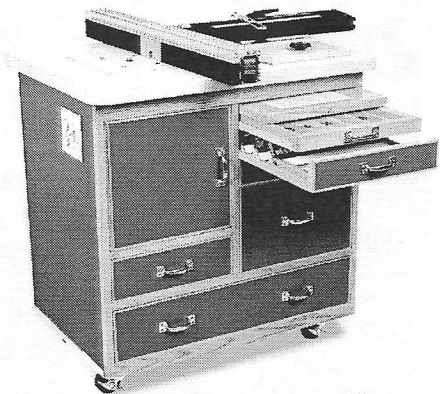
PRECISION WOODWORKING TOOLS FOR ROUTER TABLES AND TABLE SAWS

JOINTECH[®]

Ultra-Precision Woodworking Systems

- **Combination Router & Table Saw Fences**
Micro Adjustable, Accurate to 1/1000 of an inch
- **Router Tables, Table Saw Extension and Floating Infeed/Outfeed Tables**
Available in Solid Phenolic or Melamine
- **Complete Table Saw Upgrade Systems**
Available for virtually all Cabinet & Contractor Saws
- **True Zero Clearance Miter/Cutoff Sled**
Micro-Adjustable, Positive Detents Every 1/2 Degree
- **Table Mounted Router Lift System**
Raise & Lower a Router with 1/1000 of an inch precision
- **And Much More...**

Jointech Routing Center



**Award Winning Tools
from Jointech, Inc.**



CALL FOR YOUR FREE CATALOG!

1-800-619-1288

or visit us On-Line at: www.jointech.com

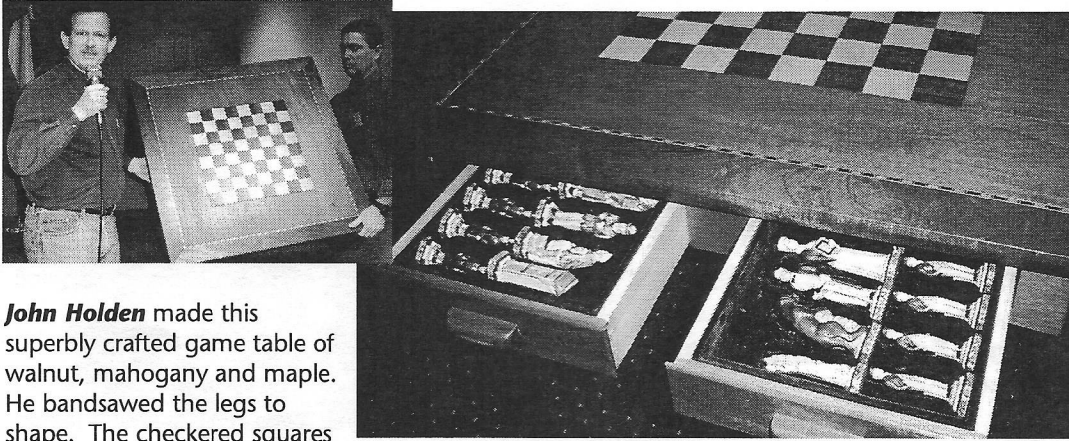
Starting winter of 2004, Jointech will open the doors to its first Woodworking Academy for all woodworkers. Classes will range from basic woodworking techniques to advanced cabinet making. Be sure and go on-line to see the latest information posted.

Authorized Dealer For:

**GENERAL
INTERNATIONAL**

3

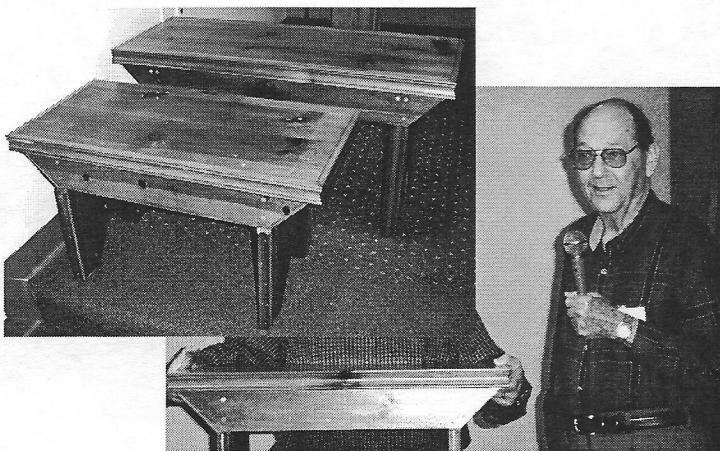
March projects



John Holden made this superbly crafted game table of walnut, mahogany and maple. He bandsawed the legs to shape. The checkered squares are glued to plywood but not to each other. John says this tip came from a book in the club library.

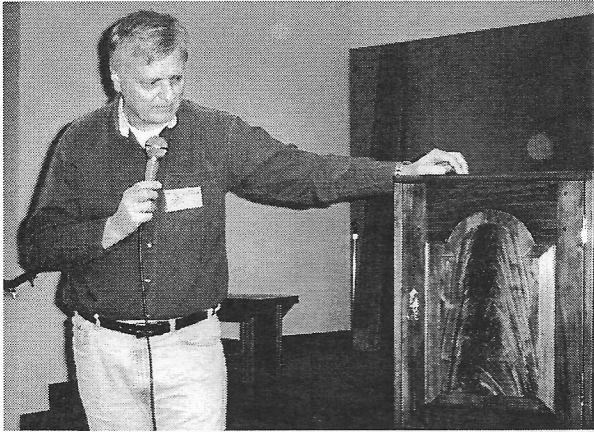


Lewis Vallette shows off some bowls that he crafted. The tall chalice-like bowl is made of glued up and stacked rings of 24 pieces per ring. Mr. Modest says there is nothing to it..



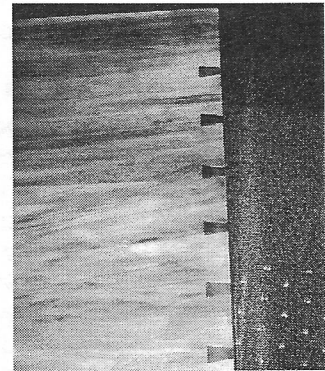
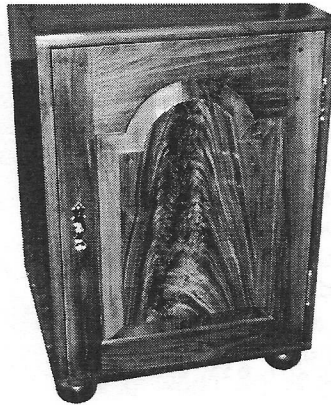
These benches of salvaged naughty... uh...knotty... pine were crafted by **Marcus Brun**. The challenge was to strategically place the knots for show. The finish is polyurethane. A tip of the green award for Mr. Brun for recycling lumber.

4

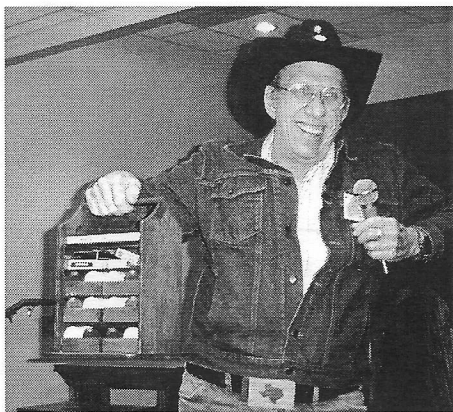
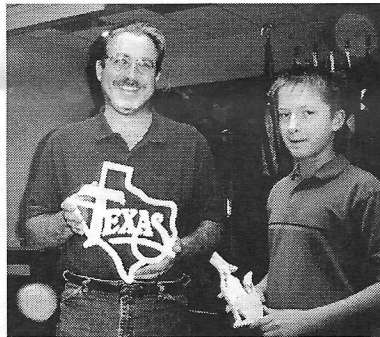


Jack Hutchison points out how he crafted the raised panel door that graces the front of this 18th century commode. The commode was used as a cabinet although one member said it was used to store the chamber pot, hence why it is called a commode.

The raised panel veneered with crotch walnut floats in the framed door. The hand made ball finial hinges are imported from England. A cherry plywood panel backs up the commode. The sides are dovetailed to the top.



Scott and Kyle Adams proudly show off their scrollwork pieces to the club.



A poker party benefited from **Ted Ojevich's** craftsmanship. Ted built this to accommodate chips, cards and a rule book. The sliding front pieces, that give access to the supplies, slide behind the supplies to be out of the way. I'll wager his buddies tried to double or nothing him out of it.

All Current Work photos & text by Gary Rowen

Club Contacts

- Jim Robertson, *President* [REDACTED]
- Walter Mason, *Vice-President* [REDACTED]
- Gary Rowen, *Secretary* [REDACTED]
- Al Morrow, *Treasurer* [REDACTED]
- Ken Kooser, *Director* [REDACTED]
- Paul Koury, *Director* [REDACTED]
- Tom Matkin, *Director* [REDACTED]
- Mike Kelly, *Director* [REDACTED]
- Gary Rowen, *Webmaster* [REDACTED]
- Joe Edelen, *Name Tags* [REDACTED]
- John Gay, *Book Library* [REDACTED]
- Blaine Stokes, *Video Library* [REDACTED]
- Loretta Buckley, Bill Hochmuth, *Coffee Committee*
- Bill White, *Communications Director and Newsletter*
- Editor* [REDACTED]



Brandle's Sawmill

Rough Sawn Pine and Hardwoods

Custom Sawing

Logs up to 33" X 24'

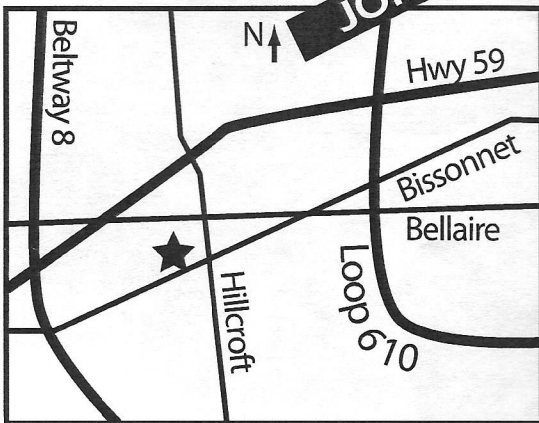
13868 Lakeland Drive
Montgomery, TX
77356

936. 597.4575
(Call for Directions)

WWCH Monthly Meeting

Second Saturday of every month
We open the doors at 8:30am, program starts at 9:00 and winds up by 11:30am.

Bayland Community Center
6400 Bissonnet
Houston, TX 77074



Woodworkers Club of Houston Membership Application



A WWCH Membership is a chance to learn about woodworking, visit with other woodworkers and see some fabulous projects. Your membership includes a monthly newsletter, access to our video and book library, invitation to field trips and occasionally we collectively buy tools at discounted prices. Considering the cost it's a genuine bargain. So, cut out this application, include a check for \$24.00 yearly membership and mail it to the address below. And join us once a month for a good time.

Name _____

Address _____

City _____ State _____ ZIP _____

Phone () _____

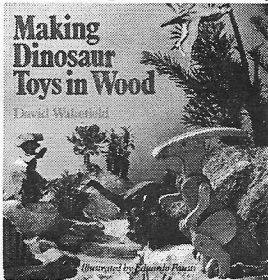
Mail To:
WWCH Membership
502 Aurora
Houston, TX 77008

\$24⁰⁰ A bargain!

6

The club allowed me to buy some books at the Woodworking Show but we already had most of the same books so I found some at other places and we also had some donations. All in all, there are 16 new additions to our library. Eddie Thomas gave us some more books on furniture and there were some really nice books that were also given but I did not write down the names of the donors, but thank you for them. So these new additions will be available to you next meeting.

Due to the large number of new additions to our club, I am just going to review a couple of them. We have the second book by David Wakefield on making animated toys. His first one has been



checked out many times, this one could be more popular. It is **Making Dinosaur Toys in Wood**. But not just toys, he has detail plans for dino swings, scooters, rockers, coat racks as well as large and miniature moving toys.

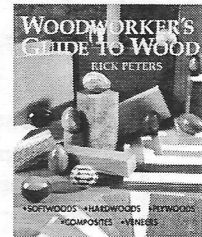
One of the plans that caught my eye was the making of a Plesiosaurus. It is unique. The four flippers are hinged so they will move up and down. However the long neck and head is mounted with wheels that are drilled at an angle so it will move side ways. There is

a lot of movement in this toy and it looks fun and easy to make.

There are 25 plans in this book; they are all very clear and built with easy to follow step-by-step drawings. It is a fun book.

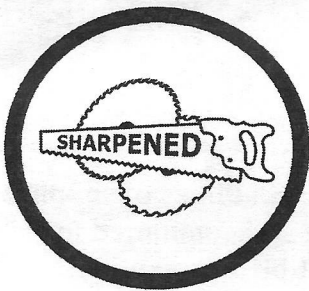
The other book that I would like to tell you about is **Woodworker's Guide to Wood** by Rick Peters. This book is all about softwoods, hardwoods, plywoods, composites and veneers. It is full of photos and illustrations and what is really great is that they are all in color. I didn't see one black and white picture.

In one of the chapters, he describes 64 varieties of wood with a descriptive text, color photos of the raw wood and how it looks when it is finished. Also, each wood has a very useful Characteristics chart that rates the cost, density, workability and finishing. There is a nice Wood Glossary in the back, so this is a very good reference book for wood—one of the best.



Well, that is it for now except one more thing: we have a lot of good furniture books but what would be a good addition to this collection would be a book on upholstery. I'll keep my eyes open for one.

John Gay
Library



Circle Saw Builder's Supply, Inc.
Circle Saw Shop of Houston, Inc.

2510 ELLA BLVD. • CORNER WEST 26TH ST. • HOUSTON, TEXAS 77008

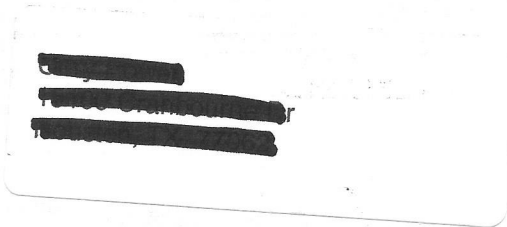
CONTRACTORS AND BUILDERS TOOLS AND SUPPLIES

- MAJOR BRAND TOOLS
- PNEUMATIC NAILERS
- STATIONARY TOOLS
- CHAIN SAWS & SUPPLIES
- WOOD WORKING TOOLS
- PORTABLE TOOLS
- SHARPENING SERVICES

(713) 864-8444 • FAX (713) 864-6014 • www.circlesaw.com

Woodworkers Club of Houston

11319 Atwell Drive
Houston, Texas 77035



MARK YOUR CALENDARS:



WWCH Monthly Meeting: April 10
Scheduled program:
Rockler Tools

Next Monthly Meeting: May 8

Club Meeting Changes Location This Month
See page 1 for details!

Woodworkers Club of Houston • 77042#2822 • www.wwch.org • Meeting Second Saturday of Every Month

The Cutting Edge offers only the finest woodworking tools and supplies.

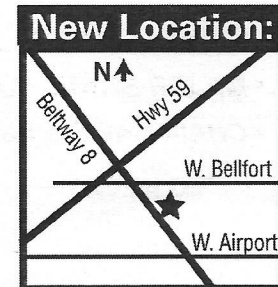
Come visit and see our new and expanded store. We've kept all the best lines of supplies and equipment and added lumber and a few other surprises. We're still committed to providing the best sales and service in the Houston area. You won't be disappointed.

- Woodworking Machinery
- Turning Tools and Supplies
- Carving Tools
- English Hand Tools
- Japanese Hand Tools
- Lumber from around the world
- Monthly Woodworking Classes



Best Prices on JET Machinery Every Day!
Authorized JET Service Center

See our web site for our monthly list of classes and much more:
www.cuttingedgetools.com



11760 S. Sam Houston Pkwy W.
713. 981. 9228

