

Woodworkers Club of Houston

Volume 13, Number 4 April, 1997

March Meeting

The meeting was called to order by Don Richardson.

The visitors and new members were recognized. It was brought to our attention that we need to make an effort to visit with our visitors. People will be more inclined to join the club if they receive a friendly welcome.

The new name tags and directories were ready. If you did not pick up your directory, you should receive it in the mail. If you did not get it call Jimmie Harp.

There were 90 members in attendance.

A thank you letter from The Richmond State School was read and a photo of the people who worked on the project was passed around. The photo is printed on page two of the newsletter.

Show & Tell:

Joe Cook brought his Pie Safe made from Long Leaf Pine. It had mortise and tenon joints with square pegs and nails. He bought the tin from Country Accents. He hand punched each piece and coated them with polyurethane to prevent rust. The pine was finished with Watco oil and Bartley's varnish.

Chuck Maxwell brought a riding toy which was one of several that he made for Texas Childrens Hospital.

Bill Rhea had a Prie Dieu (kneeler) that he designed and built from a picture in a magazine. It was made out of Mahogany. The mortise and tenon joints were made with a Liegh jig and the dovetails were made with a Keller jig. The finish was red mahogany stain and Minwax wipe on polyurethane.

Don Richardson had a turned toothpick from a Chinese restaurant by a friend of his.

Problems & Solutions:

What is the best way to apply Deft to the outside of a cedar chest?

Use a sprayer. Cut it for HVLP sprayer or spray it straight from the can with a high pressure sprayer. Do not spray the inside.

How do you keep from getting a dip when cutting a taper leg on the joiner?

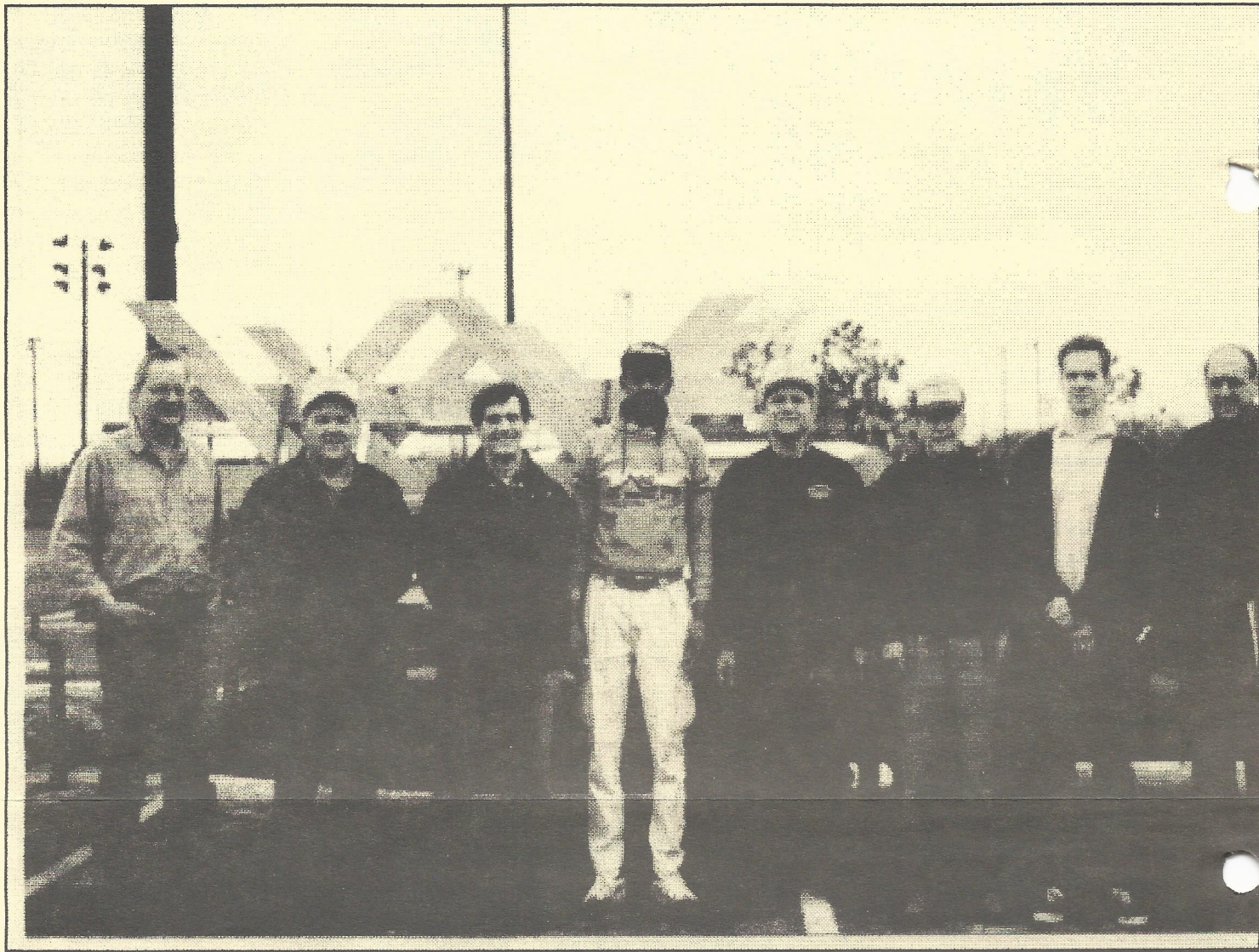
Start the taper towards the small end of the leg and work up until you get a cut parallel to your finish line and finish your leg to the line.

Which anti-kickback wheels are the best?

Some wheels are just hold-downs. A true anti-kickback wheel will not reverse.

How to keep from splintering plywood on a tablesaw?

Use a Woodworker II or a Duraline blade. Check your saw for proper alignment. Use a utility knife and a straight edge to score the cut before sawing.



The members who made the tables and benches for the charity project from left to right: Bill Rhea, Mike Turner, Bruce Braunstein, David Cobb, Jimmie Harp, Guy Meaders, David Rinn, and Marcus Brun.

The charity project is finished. The Northwest Splinter Group finished two covered swings and Jimmie Harp delivered them.

Program:

Steve LeGrue, owner of The Cutting Edge, did the program on "Inkra Jig Basics". Steve worked 16 years at the University of Texas Health Science Center and did woodworking as a hobby before he and his wife, Terri, opened The Cutting Edge in 1993.

Steve is a proficient woodturner, carver, and furniture maker. He teaches classes on these subjects at his store.

He gave a history of the Inkra Jig and explained the parts and how it worked. He brought his own router table and Inkra Jig and showed how to line it up

and cut a 3/8" box joint. He showed how to choose the correct template and how to use the auto center to center your board. Steve used a 3/8" 2 flute carbide cutter in a plunge router to cut his joints.

The main things to remember are: make sure your board is centered, keep the same reference plane against the fence, and cut the pins long so you can sand them flush with the sides of the box, and make sure you are exactly on the line when index to the next cut or you could be one notch off.

It was a very good program and we thank Steve for giving us his time and knowledge.

April Meeting

When: April 12, 1997 9:00 AM

Where: Bayland Community Center
on Bissonnet at Hillcroft

Program: Tom Kennedy
"Furniture Finishing"

Raffle: Items to be announced

Items Of Interest:

The Cutting Edge has "Free Saturday Tool and Technique Basics Seminars" - 11:00 am to Noon.

Unlimited attendance, Free to the public.

April 12, 1997 Plate Joinery Basics

April 19, 1997 Gulf Coast Woodturner's
Association Meeting

April 26, 1997 Woodturning

May 3, 1997 Table Saw Basics

Woodcraft has "Sawdust Sessions" on Thursday
nights from 7:00 - 8:00 PM. Free to the public.

Raffle:

Brad Hartman, manager of Woodcraft Supply,
donated a Quick Corner 45 Deg. chamfer, a glue
container, a 6" engineers square, a 4" engineers
square, a set of dowel and tenon transfer pins, and a 3
x 2 Inca Rule.

Steve LeGrue, owner of The Cutting Edge,
donated two 6" Precision Inca Rules, and a 6" Inca
Precision T-Rule.

Want Ads:

Shop Smith Mark V 510 accessories: a Bandsaw
and a Joiner. \$450.00

Call David Cobb at (281)469-6550.

Two Shop Smith double bar clamps- 36" (15 1/4"
minimum). List \$59.99 Sale \$35.00 each.

One conical sanding disk. List \$39.99 Sale \$25

One sharpening guide. List \$44.99 Sale \$30.00

Contact Don Sloan at (713) 688-8986

8" Rockwell Delta Joints. \$250.00

Call Charles Boyd at 465-7466.

Jigsaw for Shop Smith \$50.00.

Call Boyce Gahagan at (281) 446-1590.

The Northside Splinter Group meets on the first
and third Monday of each month from 7:00 - 9:00 P.M.
at Jimmie Harp's shop, at 848 1/2 west 24th street.
862-7222.

We have nothing to do. The charity project is
finished. Bring your plans at the next meeting and put
us to work.

New Tapes:

"Planes" and "Chairmaking" by Roy Underhill.

"Professional Sharpening"

Marc Adam's Technical Technique video Series

A Field Trip Chairman is needed. Call Don or Bill.

Official WwCH Knit Shirts can now be ordered in
small quantities.

Prices are:

Small, Med., Lg., XLg. _____ \$24.36

XXLg. _____ \$25.38

XXXLg. _____ \$25.98

XXXXLg. _____ \$27.06

These shirts are embroidered, not printed.

Officers

President	Don Richardson	661-1365
Vice President	Bill Rhea	266-9412
Sec'y/Treas.	Guy Meaders	771-4875

Services

Book Library	Alan Bachrach	729-7534
Video Library	Dennis Muras	943-7745
Literature Search	Don Richardson	661-1365
Name Tags	Andy Anderson	723-1030
Coffee	Loretta Buckley	944-6739
	Bill Hochmuth	774-1733

Directors

Saul Harris	341-5373
Charles Sylvester	774-6551
Mike Turner	988-1485
Lewis Vallette	643-2014

Newsletter Editor

Bob Gilbertson	869-7081
----------------	----------

Newsletter Distribution

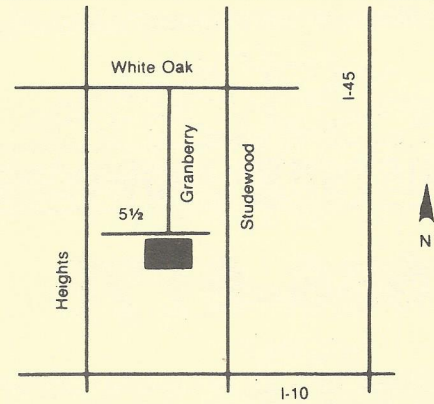
Thad Brown	522-8364
------------	----------

HARDWOOD LUMBER CO.

700 E. 51/2 St. (In The Heights)
 Houston, Texas 77007
 (713) 862-6628
 Hours: M-F 7:30-5:00, Sat. 8:30-1:30

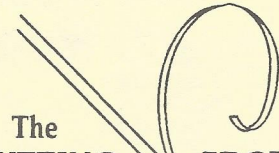
We stock over 65 species of lumber including hard to find exotics!

Also: Plywood, Veneer, Moulding, Formica, Custom Milling, Woodworking Tools, Books, etc.



Featuring the Finest Tools The World Has To Offer

English Hand Tools By Record, Stanley, Henry Taylor, & Robt. Sorby.
 Japanese Saws, Chisels & Stones By Gyokucho, Matsumura, and King.
 Biesemeyer, Makita, Bosch, Starrett, Irwin, Olson, Jorgensen,
 Magna-Set, Freeborn, Lie-Nielsen, & Incra: All Made In The USA.
 Canadian Chucks and Hand Tools By OneWay & Veritas.
 European Tools by Freud, Tormek, Sjöberg, Stern, & Footprint.



The CUTTING EDGE, Inc.
 A Woodworker's Tool & Supply

PLUS: The Best Prices On JET Machinery Every Day!

We are an Authorized JET Service Center.
 7123 SouthWest Fwy, Just North of Bellaire Blvd. (713) 981-9228

Mon. - Fri. 9 am to 6 pm
 Sat. 10 am to 5 pm
 Sun. Noon to 4 pm



Greg Long, Windsor Chairmaker
 713-668-1655

Windsor Chair Supplies & Classes

*Complete maple turning sets and blanks, riven wood and steam bendings,
 private and group instruction. Chair restoration and repair.
 Visit my retail website @ frontera.com.*

WwCH Membership

To join the Woodworkers Club of Houston for 1997, bring this form to a regular meeting or send your dues to:
 WOODWORKERS CLUB OF HOUSTON, P.O. BOX 34481, HOUSTON, TEXAS 77234

Make checks payable to Woodworkers Club of Houston.

Renewal Membership \$24.00

New Membership is prorated if 1st year is less than 1 year.

WwCH Membership Form

Last Name _____ First Name _____
 Address _____ Spouse's Name _____
 City _____ Home Telephone _____
 State _____ Zip _____ Work Telephone _____
 Renewal Membership \$ _____ New Membership \$ _____
 Interests _____



686-6176

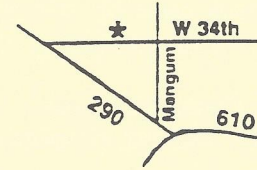
FAX: 686-3217

4910 West 34th St, Houston, Texas 77092
Hours: M-F 7:30-5:00 SAT 8:30-12:30

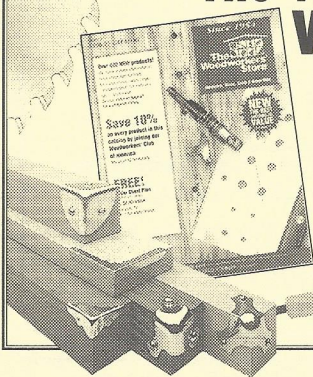
DOMESTIC & IMPORTED HARDWOODS

Ash, Aspen, Basswood, Birch, Aromatic Cedar, Cherry, Cypress, Lacewood, Mahogany, Maple, Oak, Padouk, Pecan, Poplar, Purpleheart, Redwood, Sycamore, Teak, Walnut and more.

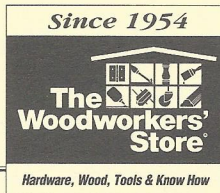
- *Quality Domestic & Imported Plywood (Interior & Marine)
- *Edgebanding & Veneer
- *Butcher Block Tops
- *MDF & Melamine
- *Moulding
- *PERSONAL SERVICE
- *PROMPT DELIVERY
- *ON-SITE CUSTOM MILLING



"The Woodworkers' Store is proud to sponsor the Woodworkers club of Houston."



- Thin & Exotic Lumber
- Hand Tools
- Computer Hardware
- Clock Parts
- Box Hardware
- Veneer
- Speciality Hinges
- Accuride Slides
- Router Bits
- Jig & Accessories
- Aniline Dyes
- Shelf Hardware
- Furniture Trim
- Screws
- Drawer Essentials



Department 63470

4365 Willow Drive, Medina, MN 55340



WOODCRAFT® Your Most Complete Woodworking Store!

Hand & Power Tools
Sanding & Scraping
Planes
Cabinet Making Supplies
Vises & Clamps
Saws

Carving Tools & Chisels
Wood Boring Tools
Woodburning
Woodturning
Project Kits & Supplies
Shop Accessories
Books & Videos

Hardware
Finishing Supplies
Safety Equipment
Sharpening Supplies
Workbenches
Picture Framing Tools
Classes

Routers & Accessories
Hardwoods & Exotics
Marking & Measuring
Power Tool Accessories
Files & Rasps
Clock Supplies



WOODCRAFT®

Woodworking Tools ■ Books ■ Supplies ■ Since 1928

Woodcraft ■ Northbrook Shopping Center ■ 5360 West 34th Street
Houston, TX 77092 ■ Phone: 713-681-5200

M-W & F: 9AM-7PM ■ TH: 9AM-9PM ■ Sat.: 9AM-6PM ■ Sun.: Noon-5PM

Looking for great quality Power & Hand Tools?
Pasadena Industrial Supply



222 West Pasadena Freeway, Pasadena Texas 77506 472-5588



Woodworkers Club of Houston
P.O. Box 34481
Houston, Texas 77234

Printed By: *Speedy Printing Service of Texas*, 3433 West Alabama, Suite C, Houston, Texas, (713) 877-8466

Calendar

(a calendar editor is still needed)

- | | |
|-------------------------|---|
| April 7, 1997 | Northwest Splinter Group at Jimmie and Brian's Shop, 7:00 P.M. |
| April 12, 1997 | Meeting at Bayland Community Center, 9:00 A.M. |
| April 21, 1997 | Northwest Splinter Group at Jimmie and Brian's Shop, 7:00 P.M. |
| May 5, 1997 | Northwest Splinter Group at Jimmie and Brian's Shop, 7:00 P.M. |
| May 10, 1997 | Meeting at Bayland Community Center, 9:00 A.M. |
| May 19, 1997 | Northwest Splinter Group at Jimmie and Brian's Shop, 7:00 P.M. |
| October 18, 1997 | Bar-B-Que at Jimmie and Brian's Shop |
| June 2, 1997 | Northwest Splinter Group at Jimmie and Brian's Shop, 7:00 P.M. |