

Woodworkers Club of Houston

December 2004 • Volume 20, No. 12 • www.wwch.org

Dear Santa

Stocking stuffer suggestions for Santa's helpers everywhere.

Dear Santa,

Another Thanksgiving has passed, and we are on the verge of my favorite time of year, Christmas! While I am eagerly anticipating all the parties, food, sports, decorating, caroling, and good cheer, I'll cut to the chase: Tools...gadgets...shop stuff.

Now before you accuse me of being materialistic and greedy, I know nothing in life is free. I have held up my end of the Santa "clause" and have been very good this year. For example:

- I use my respirator, safety glasses, and hearing protection without fail while working in the shop.
- I faithfully employ featherboards and push sticks with all saws.
- I am very generous and have made numerous projects for others.
- I come in from the shop immediately the first time my spouse calls.
- I pay my WWCH dues on time.

So c'mon Santa, 'Tis the Season. And in consideration of shipping and handling costs these days, I'll just ask for stocking stuffers. I have included a checklist with model numbers, ordering information, and web sites. You do have a high-speed Internet connection on the North Pole, right?

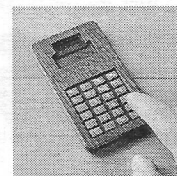


Wood Veneer Calculator, \$14.99

An elegantly styled, solar powered calculator with a lovely walnut body.

Part # 59023

Rockler.com or 1.800.279.4441



Tool Saver Kit, \$19.99

The all-in-one tool maintenance kit with rust remover, protective lubricant, pitch remover, saw blade and router bit cleaner, cutting and cooling lubricant for saw blades, Dri-tool lubricant for screw and slide edge mechanisms, and router bit lubricant.

Part # EMMTOOL12D

International Tool Corporation, 1.800.338.3384

<http://hottoolprices.com/empiretool.htm>



Premium Ear Muff Hearing Protection, \$22.50

Premium quality ear muffs with extra soft cushions that provide excellent hearing protection and noise reduction of 30db.

Single point attachment, in combination with flexible sliders, ensure that the pressure and seal is always evenly distributed around the ears.

www.cabinetmart.com/08-1301.html



JD Fastner Gauge, \$3.77

Jamestown Distributors offer a plastic combination screw gauge that measures standard or metric. Resists oil, grease, and water, Fits in a shirt pocket

Part #JD-GAUGE

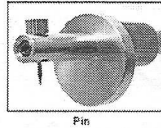
Jamestown Distributors, 1.800.423.0030
www.jamestowndistributors.com

3-in-1 Brass Marking Gauge, \$15.75

This elegant marking gauge is really three tools in one — a wheel gauge, a pin gauge, and a cutting gauge. The unique swivelling pin/blade chuck takes either a pin or a blade that locks in place (after extension is set) using a set screw in the end of the 4-1/2" gauge stem. The cutting blade can be set for either right- or left-handed use. The opposite end of the stem is tapped to accept a 3/8" diameter wheel cutter. The fence and the internal portion of the locking collet are a single eccentric brass turning. The collet fingers have just enough stem friction to hold a projection setting while you lock it in place with a half turn of the knurled locking sleeve. The 1" diameter fence is eccentric to maximize rub depth. Comes complete with a dozen spare blades, two hardened steel pins, a wheel cutter and screw, and a hex key.

Part #05N65.01

Lee Valley & Veritas, 1-800-871-8158
www.leevalley.com

**Stainless Steel Canisters, \$1.60 - \$2.30**

Superb canisters for storing screws, nails or small items of any kind where an unbreakable container with a see-through top is desirable.

The lid has a clear acrylic insert for quick identification of contents (quite useful if storing the canisters in a drawer) and friction fits for a tight seal.

Made from durable 22-gauge polished stainless steel, the large canister measures about 3-3/8" tall by 2-1/4" diameter and holds 200ml (about 6.8 fl oz); the small measures about 2" tall by 2-3/8" diameter and holds 97ml (about 3.3 fl oz).

Part #45K17.63

Lee Valley & Veritas, 1-800-871-8158
www.leevalley.com

Plane Sacks, \$7.50 - \$8.95

Made from a silicone-treated knit cotton that resists moisture, these sacks are ideal for plane storage. Designed much like a tube sock with a drawstring closure, the sacks keep dust and dirt off the planes and

help deter rust development. A tag on the outside of the sack lets you label the contents. Available in four lengths: 7-1/2" for block planes, 12-1/2" for #3 to #4-1/2 smooth planes, 16" for #5 planes and the 25" for #6, #7 and #8 jointer planes.

Part #22PO1.25

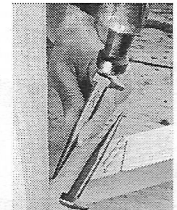
Lee Valley & Veritas, 1-800-871-8158
www.leevalley.com

**Japanese Nail Set, \$5.95**

The unique design of this tool allows you to use it as a general-purpose 6" nail set or as a 1-1/4" nail set in tight spots. Either way, the long shank gives you excellent control. But its versatility doesn't stop there. It can also serve as a punch, a drift pin, a tack hammer, or even a small anvil for straightening nails. It is one of the classic multi-purpose tools of the world. Forged steel.

Part #44K13.01

Lee Valley & Veritas, 1-800-871-8158
www.leevalley.com

**Satrrett 1" x 16 ft. Digital Tape, \$24.99**

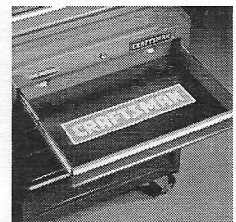
Digital readout lets you choose feet and in. to fractions and centimeters. Push-button memory retains measurement indefinitely, even when blade is retracted. Length of case is automatically added to measurement to eliminate guesswork. Also functions as a contractor-grade manual tape. Automatic self-calibration. Rugged high-impact case. Battery included. Sears

Part #009393730000
www.sears.com

**Craftsman Magnetic Tool Box Liner, 14.99**

Craftsman logo on liner. Perforated to fit a variety of drawers. Holds tools in place and organized when opening and closing drawers. Sears

Part #00965467000
www.sears.com



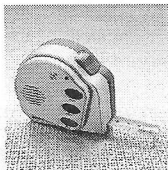
Voice Recording Tape Measure, 25.00

Voice recording tape measure records dimensions, project details while you work. Real estate agents, woodworkers, and weekend warriors will appreciate the time- and memory-saving features of this ingenious recorder. No more writing details on a pad of paper, or trusting an already overloaded memory. Just press a button and record exact measurements and important details. Retrieves comments sequentially. Metal tape is 16 ft. long. Includes spring steel belt clip and carrying case. Uses 4 button cell batteries (included).

Part # 354662

Brookstone, 1-866-576-733

www.brookstone.com



Renew your WWCH membership and get a lot in return. We don't want to lose you as a member so please pay your dues at the December meeting.

The Woodworkers Club of Houston values every member. You are part of a select group of woodworkers that is dedicated to expanding their knowledge and skill levels. There are many benefits to being a member including receiving a monthly newsletter. Some of the other benefits include the following:

Sure there are plenty of good woodworking schools around the country. And several of our members have

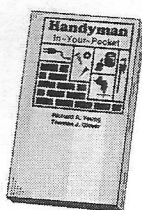
Handyman In Your Pocket Reference Guide, \$12.95

Contractors, builders, handymen, and do-it-yourselfers; here's everything and anything you need to know. Want the theoretical flow rate which will cause a head loss in 100 feet of 1 1/4" PVC pipe? See p. 428. Covers carpentry, electrical, math tables, glues and adhesive, paints, fasteners, HVAC, and all those other things that make your next project come together. New 2001 expanded edition; 768 pages; 3"W x 5 1/2"L; softbound pocket size. Printed in USA.

Part # 99725

Duluth Trading Company, 1-877-382-2345

www.duluthtrading.com



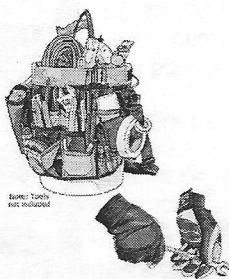
Bucket Bonanza, 27.99

This combo is on his gift list, even if he doesn't realize it. The Bucket Master™ has 69 pockets to organize a shop's worth of tools (or anything else) in a systematic, visible and easy access manner. Also includes a fresh 5-gallon bucket and revolutionary leather gloves with an anatomic fit for grip and dexterity.

Part #12348

Duluth Trading Company, 1-877-382-2345

www.duluthtrading.com



attended them. But not everyone can afford either the time or expense of these courses. For most of us the WWCH is a good alternative at a good price.

Every meeting has a "Problems and Solutions" section where members are encouraged to ask a question or two about a woodworking problem that may have them stumped. Other members will then contribute their insights and expertise.

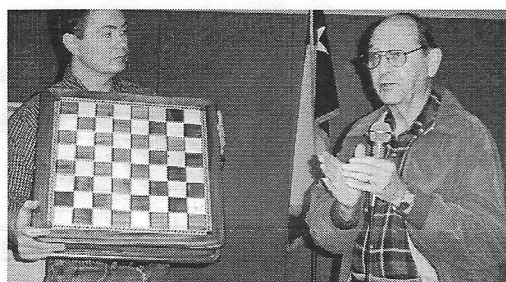
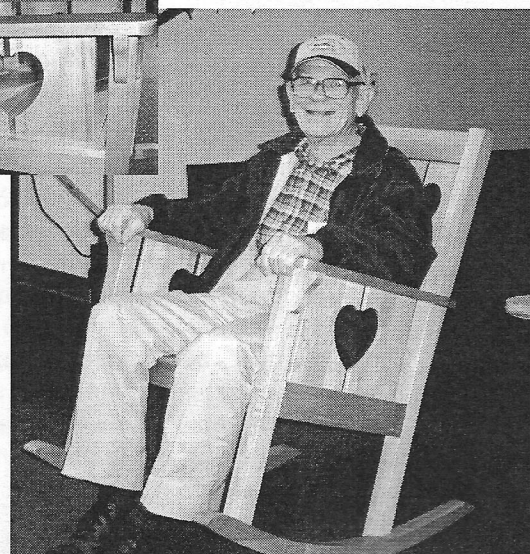
We also have a "Show and Tell" session. Members that are working on or have completed a project show us and explain how it was made and finished. Sometimes the unfinished work is more instructive than the completed work.

We will also have a monthly program presentation. This can consist of tool manufacturer's presentations, finishing demonstrations, joint making demonstrations, tool use discussions and much more. The Woodworkers Club of Houston is a great woodworking value.

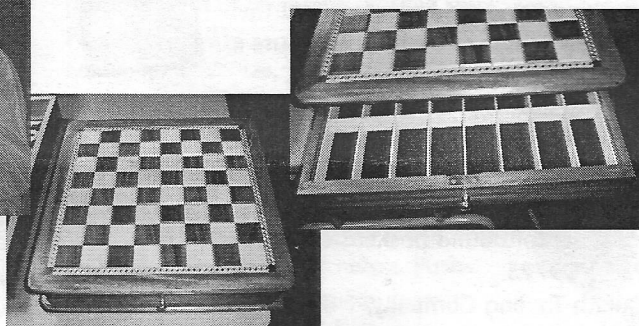
If you can't join us for the December meeting please use the form on page 7 of this newsletter and mail in your dues right away. That way you won't miss any member benefits and we won't miss you!

November projects

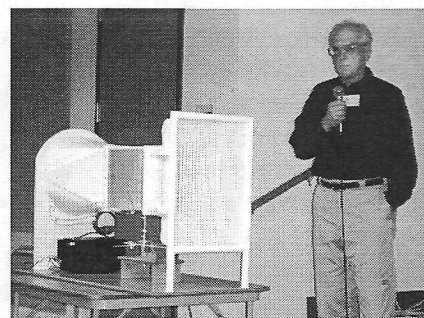
Dan Shaklovitz demonstrates the proper technique for operating this heart rocker made of bowling alley maple—you can almost hear the pins tumbling—from Nagodoches.



Marcus Brun talks about this fine chessboard crafted of walnut from dumpster diving and bowling alley maple. The frame is of mahogany. The chamfer on the square tiles create a 3-D look.



Dottie Forbes crafted this music box of wood from an old demolished garage. A club member identified the wood as Piranha wood.



Lon Kelley says that he doesn't know what to do with this wind tunnel he built, although he is an airplane enthusiast—test wooden airplanes?



SmartLift DIGITAL™

THE WORLD'S FIRST DIGITAL DIRECT-DRIVE ROUTER LIFT!



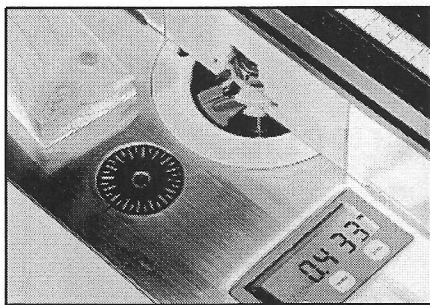
- No Belts
- No Pulleys
- No Chains
- No Sprockets

PERFECTLY ENGINEERED FOR PRECISION PERFORMANCE

The three most common complaints with existing Router Lifts are: Backlash, the fact that moving parts are exposed to sawdust & the frustration over making bit height adjustments. That all ends now!

Introducing the SmartLift Digital from Jointech. The world's first and ONLY Digital Direct-Drive Router Lift.

The SmartLift Digital's Direct-Drive design uses a Patent Pending continuously self-adjusting anti-backlash mechanism that eliminates backlash now and forever. All of the moving parts of the SmartLift Digital's gear-to-gear-to-gear Direct-Drive system are enclosed inside of the Router Carriage Assembly thus eliminating sawdust from "gumming up the works". And with a precision Digital Absolute Encoder attached directly to the Router Carriage Assembly, every ounce of bit height adjustment is displayed in the digital display located on the lift's top plate in your choice of inches to .001" or millimeters to .01.



Also available without Digital Encoder.

Imagine...No more backlash...No more gummed-up lifting mechanisms...No more guesswork when adjusting or repeating a bit height adjustment. Well, stop imagining...it's here...The SmartLift Digital. But then, what would you expect from the company that has been making precision and quality a part of woodworking for nearly 20 years? Call now to get your SmartLift Digital.

SETTING THE STANDARD ONCE AGAIN!

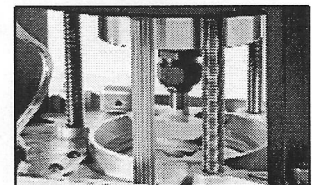
CALL NOW FOR SPECIAL INTRODUCTORY OFFER!

1-800-619-1288

Manufactured by:

JOINTECH®

Ultra-Precision Woodworking Tools



Three precision S.S. leadscrews provide unparalleled stability & accuracy to .001".

Jointech is a registered trademark of Jointech, Inc. Patent Pending on SmartLift Digital.



Specializing in quality hardwoods, plywoods and moulding since 1990.

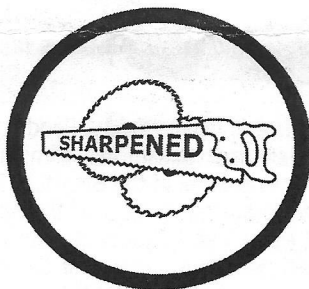
Select your own wood from our supply of Birch, Mahogany, Maple, Padouk, Teak, Walnut and much more.

- Domestic and Imported Plywood
- Edgbanding and Veneer
- Butcher Block Tops
- MDF and Melamine
- Moulding

Houston Hardwoods has built a reputation for personal service, prompt delivery and on-site custom milling. Come by and meet our friendly staff or visit us on the web at www.houstonhardwoods.com



4910 West 34th St, Houston, TX 77092
 Tel: 713. 686. 6176 • Fax: 713. 686. 3217
 M-F: 7:30 - 5:00, Sat: 8:30 - 12:00



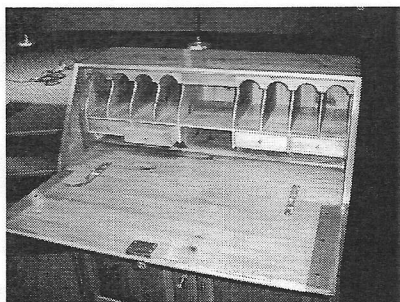
Circle Saw Builder's Supply, Inc.
Circle Saw Shop of Houston, Inc.

2510 ELLA BLVD. • CORNER WEST 26TH ST. • HOUSTON, TEXAS 77008

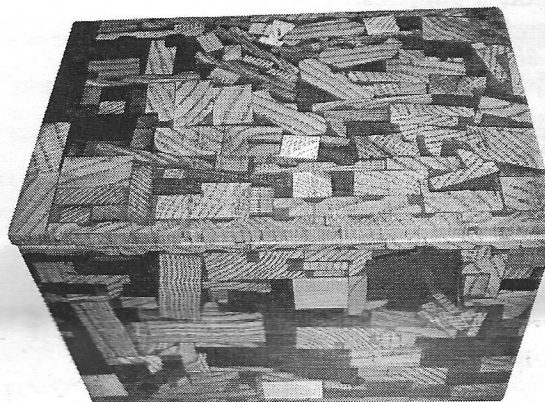
CONTRACTORS AND BUILDERS TOOLS AND SUPPLIES

- MAJOR BRAND TOOLS
- PNEUMATIC NAILERS
- STATIONARY TOOLS
- CHAIN SAWS & SUPPLIES
- WOOD WORKING TOOLS
- PORTABLE TOOLS
- SHARPENING SERVICES

(713) 864-8444 • FAX (713) 864-6014 • www.circlesaw.com



Jack Hutchison explains the history of the Gov. Wintrop Slant Top Desk that he replicated. This period piece contains many dovetailed joints made on a Leigh Jig. The hardware is, "Holy Shellac Batman", Chippendale batwing style. Notice the raised panel drawer bottoms and the shelf supports of sawtoothed pieces.



Rich Thomas explained how he made this box of various pieces of scrap wood using epoxy as filler -- notice the end grain. The backgammon background was needle-pointed by his Sister-In-Law while Rich made the frame of mahogany, a gift for his Brother - In - Law. The sofa table is also made of mahogany and finished with several different stains and varnish.



Ken Kooser crafted these Texas star boxes of Blackjack Texas Oak and Spanish Cedar. Ken made a box to enclose a soldier's infantry pin, a gift and reflection on **Art Chester's** service during WWII.

Current Work photos &
text by Gary Rowen

Resources: This column is devoted to woodworking stuff and where to get it. The Woodworkers Club encourages its members to patronize the businesses that support the club through advertising (noted in **bold**). Note: the Club makes no claims of satisfaction from these vendors and this listing is not intended as an endorsement.

Fine Woodworking Tools and Supplies:

• The Cutting Edge

**11760 S. Sam Houston Pkwy
Houston, TX 77031 713. 981. 9228**

**Woodcraft Supply
13155 Northwest Frwy
Houston, TX 77040 713. 690. 8508**

**Woodwright
1407 Spring-Cypress Road
Spring, TX 77373 281. 651. 9663**

**Rockler Tools
3265 Southwest Frwy
Houston, TX 77027 713. 622. 6567**

Exotic Lumber & Mills:

**• Houston Hardwoods
4910 W. 34th Street
Houston, TX 713. 686. 6176**

**• Brandle's Sawmill
13868 Lakeland Dr.
Montgomery, TX 77356 936. 597. 4575**

**Clark's Hardwood Lumber
700 E. 5 1/2 Street
Houston Heights 77007 713. 862. 6628**

**Third Coast Hardwoods
18734 E. Hardy Street
Houston, Texas 77073 281. 233. 0400**

**Texas Kiln Products
170 Texas Kiln Place
Smithville, TX 78957 800. 825. 9158**

Speciality Tools and Equipment:

**• Jointech
11811 Warfield Drive
San Antonio, TX 78216 800. 619. 1288
Shopsmith 800. 543. 7586
www.shopsmithmarkv.com**

Hardware:

**Southland Hardware
1822 Westheimer
Houston, TX 77098 713. 529. 4743**

**Buffalo Hardware
2614 Westheimer
Houston, TX 77098 713. 524. 1011**

**Cox Hardware & Lumber
1923 Wayside
Houston, TX 77091 713. 923. 9458**

**Cornerstone Hardware (formerly Cabinetmakers Hardware)
6910-J Renwick
Houston, TX 77081 713. 839. 8586**

**Sunbelt Fasteners
7115 Ashcroft
Houston, TX 77081 713. 774. 5250**

**Pasadena Industrial Supply
222 West Pasadena Freeway
Pasadena, Texas 77506 713.472.5588**

Power Tools & Supplies:

**• Circle Saw Builders Supply
2510 Ella Blvd.
Houston, TX 713. 864. 8444**

**Harbor Freight Tools
17490 Hwy 290
Houston, TX 77040 832. 467. 9442**

**Nothern Tool and Equipment
7994 Bellfort
Houston, TX 77061 713.643.2342**

Pen Supplies:

**Boyce Cahagan Pen Supplies
20201 Fox Glen
Humble, Texas 77338 281. 446. 1590**

Web Sites:

Flying Dutchman Scroll Saw Blades

<http://www.mikesworkshop.com/>

Gatto Plan Supply

<http://www.gattoplans.com/>

Toys and Joys

<http://www.toysandjoys.com/>

Amazon.com

www.amazon.com

ebay

ebay.com

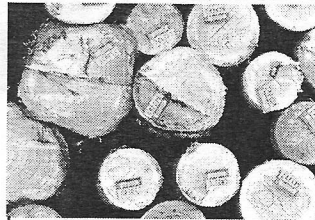
BT3 Central (Ryobi BT 3000 table saw users)

<http://bt3central.com>

Note: Got any suggestions for the Resources List? Get them to Bill White at 713.524.8768 or bwhite444@houston.rr.com.

Club Contacts

- Jim Robertson, *President* [REDACTED]
- Walter Mason, *Vice-President* [REDACTED]
- Gary Rowen, *Secretary* [REDACTED]
- Al Morrow, *Treasurer* [REDACTED]
- Ken Kooser, *Director* [REDACTED]
- Paul Koury, *Director* [REDACTED]
- Tom Matkin, *Director* [REDACTED]
- Mike Kelly, *Director* [REDACTED]
- Gary Rowen, *Webmaster* [REDACTED]
- Joe Edelen, *Name Tags* [REDACTED]
- John Gay, *Book Library* [REDACTED]
- Blaine Stokes, *Video Library* [REDACTED]
- Loretta Buckley, Bill Hochmuth, *Coffee Committee*
- Bill White, *Communications Director and Newsletter Editor* [REDACTED]



Brandle's Sawmill

Rough Sawn Pine and Hardwoods

Custom Sawing

Logs up to 33" X 24'

13868 Lakeland Drive
Montgomery, TX
77356

936. 597.4575
(Call for Directions)

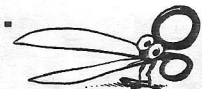
WWCH Monthly Meeting

Second Saturday of every month
We open the doors at 8:30am, program starts at 9:00 and winds up by 11:30am.

Bayland Community Center
6400 Bissonnet
Houston, TX 77074



Woodworkers Club of Houston Membership Application



A WWCH Membership is a chance to learn about woodworking, visit with other woodworkers and see some fabulous projects. Your membership includes a monthly newsletter, access to our video and book library, invitation to field trips and occasionally we collectively buy tools at discounted prices. Considering the cost it's a genuine bargain. So, cut out this application, include a check for \$24.00 yearly membership and mail it to the address below. And join us once a month for a good time.

Name _____

Address _____

City _____ State _____ ZIP _____

Phone () _____

Mail To:
WWCH Membership
502 Aurora
Houston, TX 77008

\$24⁰⁰ A bargain!

Woodworkers Club of Houston

11319 Atwell Drive
Houston, Texas 77035



MARK YOUR CALENDARS:



December 11
• Election of Officers
• Program: Making Windsor Chairs

Next Monthly Meeting:
January 8



**Merry Christmas and a
Happy New Year to all!**

77062+2622 15

Woodworkers Club of Houston • www.wwch.org • Meeting Second Saturday of Every Month

The Cutting Edge offers only the finest woodworking tools and supplies.

Come visit and see our new and expanded store. We've kept all the best lines of supplies and equipment and added lumber and a few other surprises. We're still committed to providing the best sales and service in the Houston area. You won't be disappointed.

- Woodworking Machinery
- Turning Tools and Supplies
- Carving Tools
- English Hand Tools
- Japanese Hand Tools
- Lumber from around the world
- Monthly Woodworking Classes

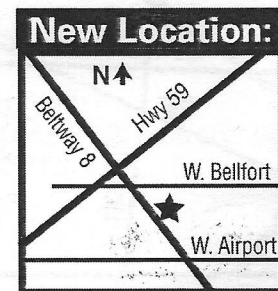
JET

POWERMATIC

DELTA®

**Best Prices on JET
Machinery Every Day!
Authorized JET Service
Center**

See our web site for our
monthly list of classes and
much more:
www.cuttingedgetools.com.



11760 S. Sam Houston Pkwy W.
713. 981. 9228

The CUTTING EDGE, INC
A Woodworker's Tool & Supply